



# Samsung Android 12 on Galaxy Devices

April 15, 2022

Version: 8.0.1

## Copyright Notice

---

Copyright © 2020-2022 Samsung Electronics Co. Ltd. All rights reserved. Samsung is a registered trademark of Samsung Electronics Co. Ltd. All brand, product, service names and logos are trademarks and/or registered trademarks of their respective owners and are hereby recognized and acknowledged.

## About this document

---

This document describes the enterprise guidance for the deployment of Samsung devices in accordance with the Common Criteria-validated configuration. The document is intended for mobile device administrators deploying Samsung devices.

## Document Identification

---

<b>Document ID</b>	Samsung MDF Admin Guidance v8.0.1
<b>Document Title</b>	Samsung Android 12 on Galaxy Devices Administrator Guide

---

# Contents

---

1	Introduction.....	5
1.1	Scope of Document.....	5
1.1.1	End-User Guidance .....	5
1.2	Overview of Document .....	5
1.3	Terminology & Glossary .....	5
1.4	Evaluated Devices .....	6
1.4.1	Device Equivalency Claims.....	8
1.4.2	Device Details .....	10
1.5	References .....	14
2	Mobile Device Deployment.....	16
2.1	Device Overview .....	16
2.2	Evaluated Device Capabilities .....	16
2.3	Deployment Architecture .....	17
2.3.1	Deployment Environment .....	17
2.3.2	EDM Solution Selection .....	20
2.4	Provisioning of Samsung Devices.....	20
2.4.1	Work Profile Configurations .....	21
3	Common Criteria Configuration .....	22
3.1	Approved Cryptography.....	22
3.2	Enabling CC Mode .....	23
3.2.1	CC Mode Status .....	23
3.3	Device Common Criteria Settings .....	25
3.3.1	Common Criteria Minimal Configuration .....	26
3.4	VPN Client Settings .....	27
3.4.1	VPN Profile Settings (All) .....	27
3.4.2	VPN Profile Settings (Standard APIs) .....	28
3.4.3	Knox VPN Profile Settings (Knox Generic APIs) .....	28
3.4.4	VPN Gateway Configuration Control.....	30
3.4.5	Third-Party VPN Clients (Device) .....	30
3.5	Additional Common Criteria Features .....	30
3.5.1	Sensitive Data Protection .....	30
3.5.2	Background Network Communications.....	31
3.5.3	Knox Separated Apps.....	31

4	End User Procedures .....	32
4.1	User Authentication .....	32
4.1.1	Setting Passwords.....	32
4.1.2	Two-step Verification .....	32
4.2	Wi-Fi Connectivity .....	32
4.3	Bluetooth Connectivity .....	33
4.4	Cellular/Mobile Network Configuration .....	33
4.5	Certificate Management .....	33
4.6	Using the VPN Client .....	34
4.6.1	Always-on Tunnel .....	34
4.6.2	“Normal” VPN Tunnels .....	34
4.7	Application Permissions.....	34
5	Audit Records .....	35
5.1	Audit Record Fields .....	35
5.2	Audit Events .....	36
6	Developer References .....	38
6.1	Cryptographic APIs.....	38
6.2	Bluetooth APIs.....	38
6.3	TLS/HTTPS APIs .....	39
6.4	Certificate Pinning.....	39
6.5	IPsec VPN APIs.....	39
7	Device Delivery and Updates .....	40
7.1	Secure Device Delivery.....	40
7.1.1	Evaluation Version.....	41
7.1.2	Pre-packaged Software Versions.....	41
7.2	Secure Updates .....	42
7.2.1	Allowed Update Methods .....	42
7.2.2	Blocking Updates .....	42
8	Operational Security.....	43
8.1	Modes of Operation.....	43
8.2	Wiping Data.....	43
8.2.1	Wiping the Device.....	44
8.2.2	Wiping the Work Profile .....	44
8.3	Additional Notes on Operational Security .....	44

# 1 Introduction

## 1.1 Scope of Document

---

This document is intended as a guide for administrators deploying Samsung devices in the enterprise. The guidance provided here focuses on how to configure devices to be in an approved configuration based on the Protection Profile for Mobile Device Fundamentals v3.2 and the PP-Module for Virtual Private Network (VPN) Clients v2.2 for the Samsung devices specified here.

The document is evolutionary. It will cover all devices evaluated with a common major version of Android.

### 1.1.1 End-User Guidance

This guidance document is focused on the central management of Samsung mobile devices. Guidance related to user functions on a device, such as managing Bluetooth connections or setting authentication credentials are outside the scope of this documentation. End-user guidance can be found both on the device (most functions are guided through the user interface with descriptions and help) or from the Samsung support website. Links to online guidance can be found in section 1.5 References.

## 1.2 Overview of Document

---

Samsung mobile devices are designed to maintain a secure mobile environment. To successfully deploy and maintain such an environment requires coordination with multiple parties including:

- Enterprise/Mobile Device Management (EDM/MDM) software
- Carriers
- Mobile Device Administrators
- Users

This document is designed for the Mobile Device Administrators, to provide guidance in how to configure and deploy Samsung mobile devices within an enterprise environment. This includes information about API controls that can be used within the EDM/MDM software to achieve this configuration.

## 1.3 Terminology & Glossary

---

Evaluated Device	Processor
ADB	Android Debug Tool
ADT	Android Development Tools
API	Application Programming Interface
BYOD	Bring Your Own Device

Evaluated Device	Processor
CA	Certificate Authority
COPE	Corporately-Owned, Personally Enabled
EDM MDM	Enterprise Device Management Mobile Device Management  NOTE: EDM will be used for consistency
FBE	File-Based Encryption
FOTA	Firmware Over-the-Air
KPE	Knox Platform for Enterprise
MDF MDFPP	Mobile Device Fundamentals Mobile Device Fundamentals Protection Profile
SDK	Software Development Kit
TLS	Transport Layer Security
VPN	Virtual Private Network

Table 1 - Acronyms

## 1.4 Evaluated Devices

---

The Common Criteria evaluation was performed on a set of devices covering a range of processors. These devices were chosen based on the commonality of their hardware across several different devices that are also claimed through equivalency. All device models are evaluated with Samsung Android 12.

The evaluation was performed on the following devices (note that the evaluation period is listed in parenthesis for each device):

Device Name	Model Number	Chipset Vendor	SoC	Arch	Kernel	Build Number	Evaluation
<b>Galaxy S22 Ultra 5G</b>	SM-908B	Samsung	Exynos 2200	ARMv8	5.1	SP1A.210812.016	Spring 2022
<b>Galaxy S22 Ultra 5G</b>	SM-S901U	Qualcomm	Snapdragon 8 Gen 1 Mobile Platform	ARMv8	5.1	SP1A.210812.016	Spring 2022
<b>Galaxy S21 Ultra 5G</b>	SM-G998B	Samsung	Exynos 2100	ARMv8	5.4.61	RP1A.200720.012	Spring 2022
<b>Galaxy S21 Ultra 5G</b>	SM-G998U	Qualcomm	Snapdragon 888	ARMv8	5.4.61	RP1A.200720.012	Spring 2022
<b>Galaxy S20+ 5G</b>	SM-G715FN	Samsung	Exynos 990	ARMv8	4.19.87	RP1A.200720.012	Spring 2022
<b>Galaxy S20+ 5G</b>	SM-G986B	Qualcomm	Snapdragon 865	ARMv8	4.19.113	RP1A.200720.012	Spring 2022
<b>Galaxy S10e</b>	SM-G986U	Samsung	Exynos 9820	ARMv8	4.14.113	RP1A.200720.012	Spring 2022
<b>Galaxy S10+</b>	SM-N976B	Qualcomm	Snapdragon 855	ARMv8	4.14.180	RP1A.200720.012	Spring 2022
<b>Galaxy Note10</b>	SM-G970F	Samsung	Exynos 9825	ARMv8	4.14.113	RP1A.200720.012	Spring 2022
<b>Galaxy XCover Pro</b>	SM-G975U	Samsung	Exynos 9611	ARMv8	4.14.113	RP1A.200720.012	Spring 2022

Table 2 - Evaluated Devices

### 1.4.1 Device Equivalency Claims

Many Samsung devices share common capabilities in different form factors, and Samsung provides common capabilities, including support for the configurations necessary for the evaluation on these devices. The following table shows the devices for which equivalency is being claimed from a device that is explicitly evaluated.

Evaluated Device	SoC	Equivalent Devices	Differences
Galaxy S22 Ultra 5G	Exynos 2200	Galaxy S22+ 5G	S22 Ultra > S22+ > S22 in terms of display size
		Galaxy S22 5G	S22+ & S22 devices have S21 Ultra 5G Wi-Fi chip
Galaxy S22 5G	Snapdragon 8 Gen 1 Mobile Platform	Galaxy S22 Ultra 5G	S22 Ultra > S22+ > S22 in terms of display size
		Galaxy S22+ 5G	S22+ & S22 devices have S21 Ultra 5G Wi-Fi chip
		Galaxy Tab S8 Ultra	Tab S8 devices are tablets (no voice calling) with S Pen
		Galaxy Tab S8+	Tab S8 Ultra > Tab S8+ > Tab S7 in terms of display size
		Galaxy Tab S8	Tab S8 Ultra & Tab S8+ have under screen image fingerprint sensor Tab S8 has power button fingerprint sensor
Galaxy S21 Ultra 5G	Exynos 2100	Galaxy S21+ 5G	S21 Ultra > S21+ > S21 > S21 FE in terms of display size
		Galaxy S21 5G	S21+ & S21 devices have S20+ 5G Wi-Fi chip
Galaxy S21 Ultra 5G	Snapdragon 888	Galaxy S21+ 5G	S21 Ultra > S21+ > S21 > S21 FE in terms of display size
		Galaxy S21 5G	S21+ & S21 devices have S20+ 5G Wi-Fi chip
		Galaxy S21 5G FE	Z Fold3 5G & Z Flip3 5G have 2 displays & folding display
		Galaxy Z Fold3 5G	Z Fold3 5G & Z Flip3 5G have power button fingerprint sensor
		Galaxy Z Flip3 5G	Z Fold3 & Z Flip3 have S22 Ultra Wi-Fi chip
Galaxy S20+ 5G	Exynos 990	Galaxy Note20 Ultra 5G	S20 Ultra > S20+ > S20 > S20 FE in terms of display size



Evaluated Device	SoC	Equivalent Devices	Differences
		Galaxy Note20 Ultra LTE	5G devices have different cellular modem
		Galaxy Note20 5G	
		Galaxy Note20 LTE	
		Galaxy S20 Ultra 5G	Note20 Ultra > Note20 in terms of display size
		Galaxy S20+ LTE	
		Galaxy S20 5G	Note20 devices include S Pen & functionality to take advantage of it for input (not security related)
		Galaxy S20 LTE	
		Galaxy S20 FE	
Galaxy S20+ 5G	Snapdragon 865	Galaxy Z Fold2 5G	S20 Ultra > S20+ > S20 > S20 FE in terms of display size
		Galaxy Note20 Ultra 5G	Note20 Ultra > Note20 in terms of display size
		Galaxy Note20 5G	Note20 devices include S Pen & functionality to take advantage of it for input (not security related)
		Galaxy Tab S7+	Z Fold2 5G & Z Flip have 2 displays & folding display
		Galaxy Tab S7	Tab S7 devices are tablets (no voice calling) with S Pen
		Galaxy Z Flip 5G	Tx70 tablets only have Wi-Fi, others have cellular
		Galaxy S20 Ultra 5G	Tab S7+ > Tab S7 in terms of display size
		Galaxy S20 5G	Tab S7+ & S20 FE have under screen image fingerprint sensor
		Galaxy S20 FE	Tab S7 & Z Flip 5G have power button fingerprint sensor
Galaxy S10e	Exynos 9820	Galaxy S10+	S10 & S10+ have ultrasonic fingerprint sensor
		Galaxy S10 5G	S10+ > S10 > S10e in terms of display sizes
		Galaxy S10	S10 5G has different cellular modem

Evaluated Device	SoC	Equivalent Devices	Differences
Galaxy S10+	Snapdragon 855	Galaxy Note10+ 5G	S10e, Fold & Z Flip have power button image fingerprint sensor
		Galaxy Note10+	S10 & S10e have smaller display sizes
		Galaxy Note10	5G devices have different cellular modem
		Galaxy Tab S6	Fold & Z Flip have 2 displays
		Galaxy S10 5G	Fold & Z Flip have folding display
		Galaxy S10	Note10+ > Note10 in terms of display size
		Galaxy S10e	Note10 devices include S Pen & functionality to take advantage of it for input (not security related)
		Galaxy Fold 5G	Tab S6 is tablet (no voice calling) with S Pen
		Galaxy Fold	T867 & T865 tablets have LTE, T860 tablets only have Wi-Fi
		Galaxy Z Flip	Tab S6 has under screen image fingerprint sensor
Galaxy Note10+ 5G	Exynos 9825	Galaxy Note10+	Note10+ > Note10 in terms of display size
		Galaxy Note10 5G	5G devices have different cellular modem
		Galaxy Note10	
Galaxy XCover Pro	Exynos 9611	Galaxy A51	XCover Pro is ruggedized
			XCover Pro has Push-to-Talk button
			XCover Pro has removable battery
			A51 has under screen image fingerprint sensor

Table 3 - Device Equivalence

The differences between the evaluated devices and the equivalent ones do not relate to security claims in the evaluated configuration. The Wi-Fi chipsets are the same for each series of common devices.

### 1.4.2 Device Details

The model numbers and evaluated versions of the mobile devices being claimed are as follows:

Device Name	Chipset Vendor	Base Model Number	Carrier Models
Galaxy S22 Ultra 5G	Samsung	SM-S908	B, B/DS
Galaxy S22 Ultra 5G	Qualcomm	SM-S908	U, U1, W, N, E, SC52C*, SCG14*
Galaxy S22+ 5G	Samsung	SM-S906	B, B/DS
Galaxy S22+ 5G	Qualcomm	SM-S906	U, U1, W, N, E
Galaxy S22 5G	Samsung	SM-S901	B, B/DS
Galaxy S22 5G	Qualcomm	SM-S901	U, U1, W, N, E, SC51C*, SCG13*
Galaxy S21 Ultra 5G	Samsung	SM-G998	B, B/DS, N
Galaxy S21 Ultra 5G	Qualcomm	SM-G998	U, U1, W, SC52B*
Galaxy S21+ 5G	Samsung	SM-G996	B, B/DS, N
Galaxy S21+ 5G	Qualcomm	SM-G996	U, U1, W, SCG10*
Galaxy S21 5G	Samsung	SM-G991	B, B/DS, N
Galaxy S21 5G	Qualcomm	SM-G991	Q, U, U1, W, SC51B*, SCG09*
Galaxy S21 5G FE	Qualcomm	SM-G990	B, N, U, U1, W
Galaxy S20 Ultra 5G	Samsung	SM-G988	B
Galaxy S20 Ultra 5G	Qualcomm	SM-G988	N, U, U1, W, SC52A*, SCG02*
Galaxy S20+ 5G	Samsung	SM-G986	F
Galaxy S20+ 5G	Qualcomm	SM-G986	B
Galaxy S20+ LTE	Samsung	SM-G985	N, U, U1, V, W, SC51A*, SCG01*
Galaxy S20 5G	Samsung	SM-G981	F
Galaxy S20 5G	Qualcomm	SM-G981	F
Galaxy S20 LTE	Samsung	SM-G980	B, N, U, U1, V, W
Galaxy S20 FE	Samsung	SM-G780	F
Galaxy S20 FE	Qualcomm	SM-G781	B, N, U, V, W

Device Name	Chipset Vendor	Base Model Number	Carrier Models
Galaxy S10 5G	Samsung	SM-G977	B, N
Galaxy S10 5G	Qualcomm	SM-G977	P, T, U, U1
Galaxy S10+	Samsung	SM-G975	F, N
Galaxy S10+	Qualcomm	SM-G975	U, U1, SC-04L*, SC-05L*, SCV42*
Galaxy S10	Samsung	SM-G973	F, N
Galaxy S10	Qualcomm	SM-G973	U, U1, SC-03L*, SCV41*
Galaxy S10e	Samsung	SM-G970	F, N
Galaxy S10e	Qualcomm	SM-G970	U, U1
Galaxy Z Fold3 5G	Qualcomm	SM-F926	B, N, U, U1, W, SC-55B*, SCG11*
Galaxy Z Fold2 5G	Qualcomm	SM-F916	B, N, U, U1, W
Galaxy Fold 5G	Qualcomm	SM-F907	B, N
Galaxy Fold	Qualcomm	SM-F900	F, U, U1, SC-06L*, SCV44*
Galaxy Z Flip3 5G	Qualcomm	SM-F711	B, N, U, U1, W, SC-54B*, SCG12*
Galaxy Z Flip 5G	Qualcomm	SM-F707	B, N, U, U1
Galaxy Z Flip	Qualcomm	SM-F700	F, N, U, U1, W, SCV47*
Galaxy Note20 Ultra 5G	Samsung	SM-N986	B
Galaxy Note20 Ultra 5G	Qualcomm	SM-N986	C, N, U, U1, W, SC010*
Galaxy Note20 Ultra LTE	Samsung	SM-N985	F
Galaxy Note20 5G	Samsung	SM-N981	B
Galaxy Note20 5G	Qualcomm	SM-N981	N, U, U1, W
Galaxy Note20 LTE	Samsung	SM-N980	F

Device Name	Chipset Vendor	Base Model Number	Carrier Models
Galaxy Note10+ 5G	Samsung	SM-N976	B, N
Galaxy Note10+ 5G	Qualcomm	SM-N976	U, V
Galaxy Note10+	Samsung	SM-N975	F
Galaxy Note10+	Qualcomm	SM-N975	C, U, U1, SC-01M*, SCV45*
Galaxy Note10 5G	Samsung	SM-N971	N
Galaxy Note10	Samsung	SM-N970	F
Galaxy Note10	Qualcomm	SM-N970	U, U1
Galaxy Tab S8 Ultra	Qualcomm	SM-X906	B, N
		SM-X900	None
Galaxy Tab S8+	Qualcomm	SM-X808	U
		SM-X806	B, N, E
		SM-X800	None
Galaxy Tab S8	Qualcomm	SM-X706	B, N
		SM-X700	None
Galaxy Tab S7+	Qualcomm	SM-T978	U
		SM-T976	B, N
		SM-T975	N, None
		SM-T970	None
Galaxy Tab S7	Qualcomm	SM-T878	U
		SM-T875	N, None
		SM-T870	None
Galaxy Tab S6 5G	Qualcomm	SM-T866	N
Galaxy Tab S6	Qualcomm	SM-T867	R4, U, V
		SM-T865	N, None
		SM-T860	None
Galaxy XCover Pro	Samsung	SM-G715	A, FN, U, W
Galaxy A51	Samsung	SM-A515	F, U, U1, W
		SM-S515	DL

Table 4 – Device Details

The Carrier Models column specifies the specific versions of the devices that have the validated configuration. These additional letters/numbers denote carrier specific models (such as U = US Carrier unified build). Only models with the suffixes listed in the table can be placed into the validated configuration. The carrier models marked by \* are explicit model numbers for those carriers and do not follow the standard specified for other models.

The following table shows the Security software versions for each device.

Device Name	MDF v3.2 Release	BT v1.0 Release	WLAN v1.0 Release	VPN PP-MOD v2.3 Release	Knox Release
All devices	1	1	2	1.1	3.8

Table 5 - Security Software Versions

The version number is broken into two parts showing the Protection Profile or Extended Package version as well as the software version that is certified. For example, the Galaxy S22 would show “MDF v3.2 Release 1”.

## 1.5 References

The following websites provide up to date information about Samsung device certifications.

Site	Information	URL
<b>Samsung Knox Portal</b>	Common Criteria documentation, Application Version List, Tools	<a href="https://docs.samsungknox.com/admin/knox-platform-for-enterprise/kbas/common-criteria-mode.htm">https://docs.samsungknox.com/admin/knox-platform-for-enterprise/kbas/common-criteria-mode.htm</a>
<b>Samsung Knox SDK</b>	Samsung Knox developer guides including EDM APIs	<a href="https://docs.samsungknox.com/dev/knox-sdk/index.htm">https://docs.samsungknox.com/dev/knox-sdk/index.htm</a>
<b>Galaxy S Device Support</b>	Manuals & User Guides for Galaxy S devices	<a href="https://www.samsung.com/us/support/mobile/phones/galaxy-s">https://www.samsung.com/us/support/mobile/phones/galaxy-s</a>
<b>Galaxy Note Device Support</b>	Manuals & User Guides for Galaxy Note devices	<a href="https://www.samsung.com/us/support/mobile/phones/galaxy-note">https://www.samsung.com/us/support/mobile/phones/galaxy-note</a>
<b>Galaxy Tablet Device Support</b>	Manuals & User Guides for Galaxy Tab devices	<a href="https://www.samsung.com/us/support/mobile/tablets/galaxy-tabs">https://www.samsung.com/us/support/mobile/tablets/galaxy-tabs</a>
<b>NIAP</b>	Product Compliant List for Samsung Electronics	<a href="https://www.niap-ccevs.org/Product/PCL.cfm?par303=Samsung%20Electronics%20Co%2E%2C%20Ltd%2E">https://www.niap-ccevs.org/Product/PCL.cfm?par303=Samsung%20Electronics%20Co%2E%2C%20Ltd%2E</a>
	Approved Protection Profiles	<a href="https://www.niap-ccevs.org/Profile/PP.cfm">https://www.niap-ccevs.org/Profile/PP.cfm</a>
<b>NIST CMVP</b>	Validated Cryptographic Modules	<a href="https://csrc.nist.gov/Projects/Cryptographic-Module-Validation-Program/Validated-Modules/Search">https://csrc.nist.gov/Projects/Cryptographic-Module-Validation-Program/Validated-Modules/Search</a>
<b>NIST CAVP</b>	Validated Cryptographic Algorithms	<a href="https://csrc.nist.gov/projects/cryptographic-algorithm-validation-program">https://csrc.nist.gov/projects/cryptographic-algorithm-validation-program</a>

Site	Information	URL
<b>NIST SP 800-63B</b>	NIST SP 800-63B Digital Identity Guidelines	<a href="https://pages.nist.gov/800-63-3/sp800-63b.html">https://pages.nist.gov/800-63-3/sp800-63b.html</a>

Table 6 – Reference Websites

## 2 Mobile Device Deployment

### 2.1 Device Overview

The mobile device is a combination of hardware running an Android operating system with modifications made to increase the level of security provided to end users and enterprises. The mobile device is intended for use as part of an enterprise messaging solution providing mobile staff with enterprise connectivity. With a focus on enterprise security, the mobile device also provides support for both IKEv1 and IKEv2 VPN tunnels using both Pre-Shared Keys as well as certificates, providing flexibility based on the environment.

The mobile device combines with an EDM solution to enable the enterprise to watch, control and administer all deployed mobile devices, across multiple service providers as well as facilitate secure communications through a VPN tunnel. This partnership provides a secure mobile environment that can be managed and controlled by the environment and reduce the risks that can be introduced when enabling mobility in the enterprise, whether through a Bring-Your-Own-Device (BYOD) or a Corporate-Owned deployment.

The Samsung Software Development Kit (SDK) builds on top of the existing Android security model by expanding the current set of security configuration of options to over 600 configurable policies and including additional security functionality such as application blacklisting. The ability to set these policies is based on the capabilities of the EDM.

### 2.2 Evaluated Device Capabilities

The product provides a significant amount of security capabilities with the core capabilities being included within the common criteria evaluation including:

Security Feature	Description
<b>Device data protection.</b> The mobile device provides security functionality to protect data at rest.	<b>File-Based Encryption (FBE).</b> The mobile device automatically encrypts data on the internal flash media of the device using AES 256.
	<b>Removable storage encryption.</b> The mobile device can encrypt all files placed onto, or already residing on, removable storage attached to the device (not all devices support removable media).
	<b>Sensitive data protection.</b> The mobile device has the ability to securely store incoming data that is considered sensitive such that it can't be decrypted without the user logging in.
<b>Application Management.</b> The device provides a number of security functions to manage device software.	<b>Application resource restrictions.</b> All applications are run within a controlled environment that limits applications to only accessing only authorized data and resources.
<b>Access Control.</b> The device can implement access control that reduces mobile user permissions and assists	<b>Device lock.</b> The mobile device can be configured to lock automatically after a defined period of inactivity (1 to 60 minutes) limiting access to device functions except those that are explicitly authorized such as emergency calls.
	<b>Local wipe.</b> The mobile device has the ability to wipe encryption keys/data on a device after a defined number of authentication attempts are surpassed.



Security Feature	Description
in reducing unauthorized access.	<b>Credential complexity.</b> The mobile device can enforce enterprise password policies forcing users to use a defined level of complexity in device passwords.
	<b>Biometrics Use.</b> The mobile device can provide biometric authentication for access to the device complementary to password policies, restricting access based on failed attempts.
	<b>Privileged access.</b> The mobile device can be configured to restrict mobile user's access to privileged functions such as device configurations.
	<b>Hotspot Control.</b> The mobile device can be configured to act as a hotspot for sharing Internet access to other devices.
	<b>Wireless network settings.</b> The wireless network configuration of the mobile device can be specified, providing requirements or pre-loaded networks.
<b>Enterprise device management.</b> Enterprise administrators can control and audit mobile endpoint configurations and wipe device if needed.	<b>Remote wipe.</b> An enterprise administrator can send a message to the mobile device to wipe all local storage and the SD card.
	<b>Security policy.</b> The mobile device and VPN can be configured by an EDM solution that supports the Samsung Enterprise SDK.
	<b>Auditing.</b> The mobile device can monitor and generate records related to security-relevant events within the device.
<b>Secure Channel.</b> Enterprise devices can securely connect to the enterprise network.	<b>VPN.</b> The mobile device provides a secure communications channel to the VPN Gateway.

Table 7 – Mobile Device Security Features

## 2.3 Deployment Architecture

The first step in deploying Samsung devices is to decide on both an EDM solution and an appropriate architecture. These selections are beyond the scope of this guidance. There are many approaches to how the management infrastructure can be configured, from on premise servers to cloud to hybrid approaches combining the two. The specifics of the architecture should be discussed with the EDM solution vendor.

Ideally, the deployed EDM solution should be evaluated to the requirements of the Protection Profile for Mobile Device Management (MDMPP).

### 2.3.1 Deployment Environment

The enterprise environment must provide all of the services required to operate and manage devices. The basic components of this model include:

Component	Description
<b>Enterprise/Mobile Device Management Solution</b>	<p>The EDM Solution secures monitors, manages and supports mobile devices deployed across the organization. Controlling and protecting the data and configuration settings for all mobile devices in the network reduces security risks.</p> <p>As part of the EDM solution, an app (usually called an Agent) is installed onto the mobile device. This Agent implements the policies from the EDM and can communicate back to the server, sending status information and logs for review.</p>

Component	Description
<p><b>Secure Tunnel Termination</b></p>	<p>A secure VPN tunnel should be initialized between the managed Android devices and the Enterprise Environment to prevent unauthorized access to enterprise resources. The connection should be based on certificates deployed on the Android user devices. Ideally, mutual authentication is deployed, meaning that both the Android user devices authenticate themselves with a certificate but also the gateway to the enterprise environment. Mutual authentication serves to prevent Android user devices to login into an unauthorized enterprise network and on the other hand prevents the unauthorized login of untrusted devices into the enterprise environment.</p> <p>For services that do not require a VPN, TLS should always be used to encrypt access to the site. Similar to the VPN, mutual authentication between the client and server is recommended.</p> <p>Note that EDM access to the between the device and server does not need to be through a VPN but is expected to have its own secure channel for communications.</p>
<p><b>Directory Services</b></p>	<p>The directory services should be set up to store, organize and provide access to information in a directory.</p>
<p><b>Business Applications</b></p>	<p>Business applications allow enterprise users to fulfill or access certain business tasks pertinent to requirements. This may include management tools, accounting utilities and contact management software/solutions.</p>
<p><b>Certificate Services</b></p>	<p>Certificate services must be implemented to manage all certificate needs throughout the enterprise environment. This includes issuing new Android device user certificates that are needed to facilitate secure communications through a VPN or TLS connection.</p> <p>It is possible that the certificate services could be provided by a third party instead of a stand-alone internal service for the organization.</p>

Table 8 – Enterprise Deployment Component Services

Figure 1 shows an example of a high-level design of an enterprise-based environment.

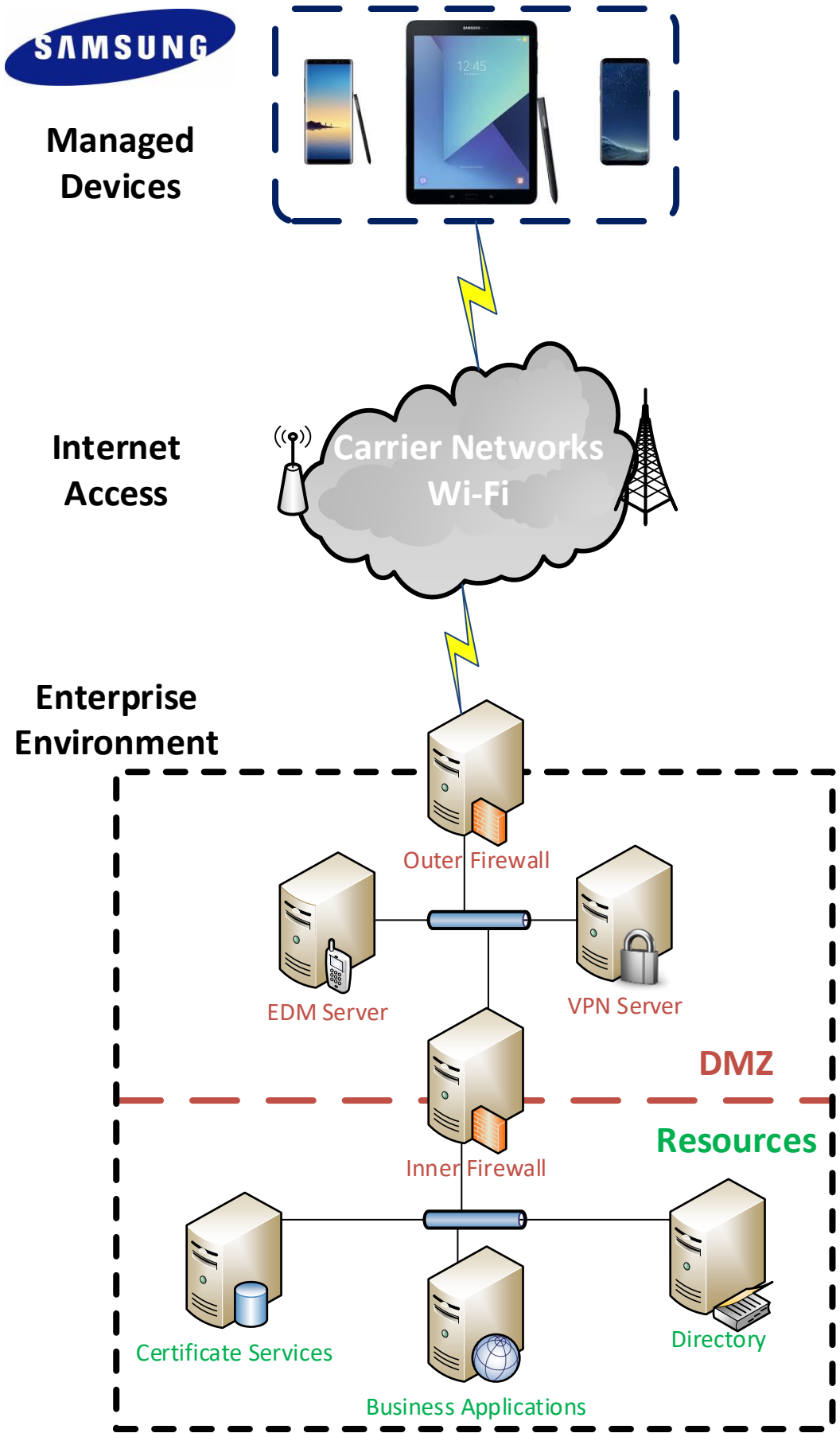


Figure 1 - Example Enterprise Architecture

## 2.3.2 EDM Solution Selection

To manage the mobile devices, an EDM must be deployed. This EDM should support the Samsung Knox APIs to enable the capabilities documented in this guide. The more complete the EDM vendor support, the more capabilities can be controlled on the device.

To enable capabilities such as remote wipe of a device, the EDM must be placed within the Enterprise environment such that it can communicate over the internet. This communication can be enabled with or without a VPN, though it is normally recommended to have EDM traffic outside the VPN to ensure access is most widely available to the device.

When selecting an EDM solution, care should be taken to ensure the ability to configure the Common Criteria configuration. The Common Criteria Configuration section provides the specific information about the Knox APIs that are necessary to support this configuration and can be used to check the compatibility of the EDM solution with the needs of the Enterprise.

## 2.4 Provisioning of Samsung Devices

---

As noted above, the secure deployment of enterprise devices is reliant on many components beyond the mobile device itself. It is expected that within the Enterprise environment the EDM solution and other required services are securely installed and configured according to the security requirements of the organization.

Once the EDM is installed and available, it is possible to begin provisioning end user devices. The provisioning process will prepare the devices for a policy configuration to be deployed, enabling the device to be placed into a Common Criteria configuration.

The mobile device must be enrolled with the EDM server to enable administration via the EDM. Enrollment is accomplished by installing the EDM Agent application onto the device. There many methods and configurations for doing this depending on the deployment scenario. The EDM documentation for deployment should be followed.

Once a device has been enrolled to the EDM, other optional configurations may be set, depending on the organization security policy. These are not required to place the device into a Common Criteria configuration, but are best practices for mobile devices.

**NOTE:** Configurations that are included as part of the controls for the Common Criteria configuration are not included here.

The following list provides some of the most common additional configuration items that may be done on a mobile device:

- Install applications required for enterprise productivity
- Provision client certificates by either:
  - Using the EDM server;
  - Using the Android Development Tools (ADT) to manually push certificates to each device via USB
    - Using the Android Debug Tool (ADB) required USB debugging to be enabled on the device for provisioning of the certificates (it can be disabled once this operation is complete)

- Placing the certificates on a microSD card and import using the device user interface
- The certificates commonly deployed are:
  - Enterprise CA certificate (used to validate the server certificates presented by the VPN endpoint and reverse proxy)
  - Wi-Fi client certificate (for authentication to an EAP-TLS Wi-Fi AP)
  - VPN client certificate (for authentication to the enterprise VPN endpoint)
  - SSL client certificate (for authentication to the reverse proxy for intranet services)
- Configure the VPN client to connect to the enterprise VPN endpoint
  - Enable 'Always-On' VPN
- Configure the email client to connect to the enterprise server

### 2.4.1 Work Profile Configurations

Through the Knox Platform, Samsung provides multiple device configurations to support different levels of application segmentation. The configurations available are dependent on how the EDM is installed on the device. A Samsung device can be placed into an evaluated configuration both with and without a work profile being configured on the device.

A Knox work profile provides a complete separate environment on a device that is fully managed by the EDM. A work profile can be used to enable some level of personal use of the device while allowing the enterprise to manage the separation of data (what can or cannot be shared, the visibility of notifications from the work profile outside, etc.), or to provide additional security for certain apps and data on the device. In this configuration, access to the work profile requires two separate authentications, one to the device and a second to the work profile.

## 3 Common Criteria Configuration

---

This section of the guide will list the configuration settings that are reviewed as part of the Common Criteria evaluation. Some of these settings are required for the device to be placed into a validated configuration while others are optional and can be used at the discretion of the organization and the attendant security policies.

### 3.1 Approved Cryptography

---

Part of the Common Criteria-evaluated configuration is the availability of approved cryptographic engines for use by the system and applications. Samsung has chosen to utilize NIST-validated cryptographic algorithms within the cryptographic modules on its devices for the Common Criteria configuration. These algorithms are made available for use by applications installed on the device through the normal Android Framework APIs.

Samsung provides the following cryptographic modules with NIST-validated algorithms on all the evaluated devices:

- Samsung BoringSSL Cryptographic Module
- Samsung Kernel Cryptographic Module
- Samsung SCrypto Cryptographic Module

In addition, the following cryptographic modules with NIST-validated algorithms are available, depending on the CPU:

- Samsung Flash Memory Protector (on devices with Samsung Exynos processors)
- QTI Inline Crypto Engine (on devices with Qualcomm Snapdragon processors)

All modules always run in a FIPS-validated mode. BoringSSL, for compatibility reasons, provides access to non-FIPS algorithms. Developers should not utilize non-FIPS algorithms in a validated configuration (but these are necessary to ensure functionality with many commercial services). Samsung integrates the cryptographic modules directly into Android so they can be accessed by any app using the native Android APIs. The APIs providing access to FIPS-validated algorithms are detailed in the section 6 Developer References. Wi-Fi connections can utilize both FIPS and non-FIPS algorithms for compatibility reasons. To ensure the use of FIPS-validated algorithms in Wi-Fi connections the Wi-Fi Access Point should be configured to specify the proper ciphersuites.

**Note:** It is possible that some applications will implement their own cryptography instead of relying on the modules provided with the device. It is the responsibility of those vendors to validate their own cryptography. Samsung recommends that developers utilize the cryptographic functions provided with the device using the native Android APIs.

## 3.2 Enabling CC Mode

The Samsung devices listed in this document support a Common Criteria (CC) Mode. This CC Mode provides feedback on whether or not the device meets the minimum required configuration according to the MDF requirements.

While there are two methods for enabling CC Mode on a device, only the EDM-managed method will be explained here.

**NOTE:** The CC Mode app is for testing and not intended as a deployment tool.

### 3.2.1 CC Mode Status

CC Mode has two possible states:

Status	Description
Enabled	CC Mode has been turned on
Disabled	CC Mode has been turned on but an integrity check or self-test has failed (such as a FIPS 140-2 self-test)

Table 9 – CC Mode Status

The status of the CC Mode check is entered into the audit log through a series of entries about each of the conditions necessary for CC Mode.

The CC Mode status can be seen by a user in **Settings/About phone/Software Security Version** under **CC mode status**. This will only appear when CC Mode has been enabled on the device. Tapping on the status will show the current settings related to meeting the evaluated configuration, the same settings recorded in the audit log.

< CC mode status

**Device minimum password quality**

Alphanumeric

**Device trust agents**

Disabled

**Device face recognition**

Disabled

**Maximum device password failures for wipe**

10

**SD card**

Encrypted

**Work environment certificate revocation**

OCSP/CRL



The following settings are listed:

Setting	Possible Values	Description
<b>Device minimum password quality</b>	Unspecified Something Numeric Numeric Complex Alphabetic Alphanumeric Complex Biometric	The specified level of the password requirements (recommended minimum is alphanumeric)
<b>Device trust agents</b>	Enabled/Disabled	Status of Smart Lock function
<b>Device face recognition</b>	Enabled/Disabled	Status of face biometric
<b>Maximum device password failures for wipe</b>	30 or less	The number of failed authentication attempts before the device will be wiped
<b>SDCard Encryption</b>	Encrypted/Decrypted	Status of whether SD Card encryption is set
<b>Work environment certificate revocation</b>	None/CRL/OCSP	None = no revocation checking CRL = CRL checking enabled OCSP/CRL = OCSP as primary and CRL as secondary is enabled Work environment – this means that the setting is applied to the work profile

Table 10 - CC mode status Page

**Note:** It is unlikely a user will see the Disabled state as the failures necessary to meet this condition are such that the device is unlikely to boot.

### 3.3 Device Common Criteria Settings

This section will lay out all the settings which have been reviewed as part of the MDF-validated configuration. While there are mandatory settings, there are also many optional settings that can be configured to the needs of the enterprise.

There are three possible configurations a device can be placed in (not all devices can be placed in all configurations).

Configuration	Description
<b>Managed</b>	This is a company-owned, fully managed device
<b>WP-C (Work Profile – Company Owned)</b>	This is a company-owned device with work profile providing for separation between personal and work apps

Table 11 – Device Configurations

The WP-C and Legacy configurations both support work profiles, while the managed configuration does not. Several of the settings may be applied to either the device, the work profile or both, depending on the scope of the setting (global to the device, or what is called user, which can be the device or a work profile). Each setting is marked under each configuration to show where the setting can be applied.

The settings used for the configuration are made up of settings from both the Google Android Enterprise APIs and the Samsung Knox Platform for Enterprise APIs. All Samsung Knox APIs specified are part of the Knox Platform for Enterprise (KPE) set of APIs and require a Knox Platform for Enterprise license to be used.

The settings have also been marked as mandatory or objective (or in the case of CC Mode, Always).

All the settings are included in the attached spreadsheet on the Device Settings worksheet.



### 3.3.1 Common Criteria Minimal Configuration

To configure the device into the minimal evaluated configuration, all settings marked as Always and Mandatory must be set. Once these have been set, the device configuration can be verified by reviewing the audit records from the device boot.

The optional configuration settings can be used to meet the deployment needs of the organization. These settings have been covered in the evaluation, but the specific settings of those items does not affect the evaluated configuration.

The following settings must be configured via the EDM after CC Mode has been enabled:

1. Set Password Quality
2. Enable the Maximum Password Failure Wipe Policy
3. Disable Smart Lock
4. Enable SD Card Encryption
5. Disable Debugging Features (Developer options)

**NOTE:** SD Card encryption is only needed on devices that support inserting removable media.

6. Enable Revocation Checking

**NOTE:** The administrator can choose either CRL or OCSP revocation checking.

If biometrics are enabled, the following setting must be configured:

1. Disable Face Lock

To ensure overall control of the Common Criteria configuration, CC Mode cannot be disabled by an end user except by performing a factory reset. It is possible to change the CC Mode status through the EDM.

#### 3.3.1.1 Application Allow/Block Listing Settings

Allow/Block listing is done using the full name of the application (such as com.android.testingapp).

The application removal process will automatically clear data associated with the application stored in the application directories. Data created or stored outside the application directories (such as photos by a camera application or documents created by a word processor) will not be removed when the application is uninstalled.

The method for configuring these lists is highly dependent on the EDM solution chosen. Please refer to the EDM specific guidance on exactly how to set these policies.

**Note:** The Application Allow/Block lists will not have any impact on apps that are part of the system image. Built-in apps can instead be Disabled.

## 3.4 VPN Client Settings

---

The device also includes an evaluated VPN client. There are two ways to configure the built-in VPN client, depending on the needs of the organization, via the Standard APIs or via the Knox Generic VPN APIs.

The Standard APIs provide a basic set of functionality for a VPN client that is configured for the entire device (all traffic would pass through this VPN profile).

The Knox Generic VPN APIs provide a highly flexible method for configuring VPNs that can include the ability to control access to applications or groups of applications to specific tunnels. The Knox VPN framework can be used to control tunnels both inside and outside the work profile, depending on where the VPN client is installed (inside or outside the work profile). The Knox VPN framework can be used with the built-in Samsung VPN client or with third-party VPN client vendors, depending on the needs of the organization.

The settings for configuring a VPN client profile can be found in the Settings Table spreadsheet ([see Device Common Criteria Settings](#)) on the VPN Settings worksheet. The specific settings can be used for profiles that are compliant with the Common Criteria configuration.

### 3.4.1 VPN Profile Settings (All)

#### 3.4.1.1 *Valid Certificate Types for IKEv1*

The IPsec Xauth RSA setting only accepts RSA certificates for the tunnel. As long as the certificates are valid (not expired, properly formatted, etc.) they can be used for the VPN configuration.

**Note:** It is possible to specify an ECDSA certificate that has been loaded into the system, but it cannot be used to establish a connection to the gateway using IKEv1.

#### 3.4.1.2 *Valid Certificate Types for IKEv2*

While the menu selection for the type of tunnel states IPsec IKEv2 RSA it is possible to utilize both RSA and ECDSA certificates for the tunnel. As long as the certificates are valid (not expired, properly formatted, etc.) they can be used for the VPN configuration.

### 3.4.1.3 Specifying a Strong Pre-Shared Key

A PSK (Pre-shared key) is like a password, a fixed string used to authenticate the VPN client to the VPN gateway. Since the PSK does not change (or at least does not change often), a strong string should be selected to protect against unauthorized access to the VPN by unknown clients.

The PSK can be entered in two forms: ASCII or HEX. All ASCII characters are supported. HEX keys must start with "0x" as the first two characters entered. If those are the first two characters, the remaining entry will be read as a HEX key. The maximum key size is 64 characters entered.

The PSK will be provided by the organization for entry (since this is something that must match the value on the VPN Gateway). The PSK is recommended to be at least 22 characters long and if not HEX, a mix of letters numbers and symbols.

## 3.4.2 VPN Profile Settings (Standard APIs)

### 3.4.2.1 Server Certificate for the Gateway

It is possible to specify a Server Certificate for the Gateway in the configuration of a VPN tunnel. This certificate will override any certificate provided by the Gateway during the negotiation of the tunnel.

This certificate may be loaded through the UI or EDM. See the device User Guidance for more information about loading certificates manually.

## 3.4.3 Knox VPN Profile Settings (Knox Generic APIs)

Configuring the VPN via Knox Generic VPN APIs has the benefit of allowing per-app routing to the VPN client. For example, all container packages can be forced to go through one tunnel, while personal applications are routed through another, or not at all.

The Knox VPN framework can be used with the built-in Samsung VPN client or with third-party VPN client vendors, depending on the needs of the organization.

To use the Knox VPN framework, the following is needed:

Setting	Value	Description
<b>VPN Installer(s)</b>	APKs from vendor	Installation package(s) from the VPN client vendor for installation on the device. Generally (though not always) this would include 2 files.
<b>VPN profile(s)</b>	JSON files	The VPN profile(s) to be deployed on the device
<b>"vpn" folder</b>	JSON files and vendor.ini	The full set of configurations (including Knox configuration) needed for deployment of the VPN profile

Table 12 – Knox VPN Framework Components

The VPN client vendor would provide the files above though the JSON configuration would have to be edited by the Administrator. More information about the JSON configuration can be found here:

<https://docs.samsungknox.com/dev/knox-sdk/VPN-json.htm>.

### 3.4.3.1 Samsung VPN Client Configuration for Knox VPN Profile

Using Knox Generic APIs requires installation of the Samsung Proxy APK on the device, which translates configuration received through these APIs onto the underlying Samsung VPN client. The use of other Proxy APKs could be used to support non-Samsung VPN clients (that is not covered here).

**Note:** Using the Samsung VPN APK will configure the Knox VPN Profile to point to the evaluated VPN client.

Provided the profile configuration string has been created as per the next section, the API flow for creating and starting a VPN connection will be createVpnProfile() -> addPackagesToVpn() -> activateVpnProfile() API.

The API flow for removing a VPN profile will be activateVpnProfile() (De-activate it) -> removeVpnProfile() API.

**Note:** When adding packages to a VPN profile, use User0 for the whole device and User10 or User100 (depending on the device) for the work profile.

### 3.4.3.2 JSON Configuration String

This is an example JSON file for the Knox VPN Client Profile.

```
{
  "KNOX_VPN_PARAMETERS": {
    "profile_attribute": {
      "profileName": "ssl",
      "host": "",
      "isUserAuthEnabled": true,
      "vpn_type": "ipsec",
      "vpn_route_type": 1
    },
    "knox": {
      "connectionType": "keepon",
      "chaining_enabled": "-1",
      "uidpid_search_enabled": "0"
    },
    "vendor": {
      "basic": {
        "autoretry": "1",
        "username": "sampleu",
        "password": "samplepw",
        "authentication type": "type",
        "host": "111.111.111.111"
      },
      "ipsec_xauth_psk": {
        "identifier": "test@sta.com",
        "pre_shared_key": "example",
        "dns_search_domains": [],
        "dns_servers": [
          "8.8.8.8"
        ],
        "frwd_routes": [
          "10.0.0.0\8"
        ]
      },
      "ipsec_xauth_rsa": {
        "user_cert_alias": "",
        "ca_cert_alias": "",
        "server_cert_alias": "",
        "dns_search_domains": [],
        "dns_servers": [
          "8.8.8.8"
        ],
        "frwd_routes": [
          "10.0.0.0\8"
        ]
      },
      "ipsec_ike2_psk": {
        "identifier": "test@sta.com",
        "pre_shared_key": "example",
        "dns_search_domains": [],
        "dns_servers": [
          "8.8.8.8"
        ],
        "frwd_routes": [
          "10.0.0.0\8"
        ]
      },
      "ipsec_ike2_rsa": {
        "user_cert_alias": "",
        "ca_cert_alias": "",
        "server_cert_alias": "",
        "dns_search_domains": [],
        "dns_servers": [
          "8.8.8.8"
        ],
        "frwd_routes": [
          "10.0.0.0\8"
        ],
        "ocsp_url": ""
      }
    }
  }
}
```

Example Xauth-PSK JSON (Other configurations in gray)

### 3.4.3.3 Server Certificate for the Gateway

It is possible to specify a Server Certificate for the Gateway in the configuration of a VPN tunnel, by providing the `server_cert_alias` string corresponding to a certificate previously installed into the keystore. This certificate will override any certificate provided by the Gateway during the negotiation of the tunnel.

This certificate may be loaded through the UI or EDM. See the device User Guidance for more information about loading certificates manually.

## 3.4.4 VPN Gateway Configuration Control

There are many configuration options for a VPN tunnel that only be configured from the gateway. The VPN client will utilize these settings from the gateway configuration to construct the secure tunnel. The following is a list of the settings that must be configured through the gateway:

- Encryption settings – while the VPN client will use FIPS validated encryption, the gateway will specify which algorithms should be used.
- IKE Protocols & Authentication – the gateway specifies which IKE protocols authentication techniques are required for establishing the connection. This includes requiring Main mode when IKEv1 is being used.
- IPsec Session Key cryptoperiod – the gateway specifies the session key cryptoperiod and can be used to configure periods under 1 hour in duration.

## 3.4.5 Third-Party VPN Clients (Device)

While Samsung devices come with a Common Criteria-certified VPN client, Enterprise customers may also use a VPN client from a third party vendor. Android provides the public class [android.net.VpnService](https://developer.android.com/reference/net/vpn/AndroidVpnService) for third party vendors to build VPN clients that can be installed within Android.

These clients may contain additional capabilities beyond those provided by the built-in Android or Samsung clients. VPN client software built using this interface may provide their own management interface outside of that provided by Samsung.

# 3.5 Additional Common Criteria Features

---

## 3.5.1 Sensitive Data Protection

Samsung has added capabilities for Sensitive Data Protection. This feature is designed to allow applications that run in the background and receive information to protect that information upon receipt. This feature is provided as part of the device, but its use is dependent on applications having been written to the APIs providing the capability. It is expected that this list will grow over time, but is currently limited to the Samsung Email application contained within the work profile.

The API for Sensitive Data Protection exists for different Knox Platform configurations, but unless an application has been written to the API, it will not take advantage of the Sensitive Data Protection function.

## 3.5.2 Background Network Communications

Samsung Android devices are usually configured by default to send anonymous usage data (including location, device ID etc.) to Google and Samsung servers. This can be disabled through device settings and will need to be enforced through procedural controls.

Samsung Android devices do not need to be associated with a Google account to operate as required within the enterprise. For example, it is still possible to receive push notifications through Google Cloud Messaging. Knox EDM APIs can be used to prevent users from signing in to these services (see EDM guidance).

## 3.5.3 Knox Separated Apps

Knox Separated Apps is focused solely on providing a highly segmented application group with no ability to share anything across the group boundary. Instead of a full environment (as in a work profile), Knox Separated Apps provides the administrator with the ability to allow or block apps from being placed into the application group, and only these apps will be available. Knox Separated Apps does not require any separate authentication, providing seamless access to the isolated apps to the end user.

## 4 End User Procedures

---

While the administrator can configure the device, the end user of the device will interact with the resulting configuration. Specific instructions about procedures for an end user can be found in the support links in section 1.5 References. There the user can specifically select their device and have tailored usage instructions.

### 4.1 User Authentication

---

When allowed, a user will be able to enroll fingerprint biometrics for use at the lock screen as an alternative to entering a password. Detailed instructions for configuring these methods can be found under the “Secure” or “Security” section of the guide for the specific device.

#### 4.1.1 Setting Passwords

Passwords and biometrics are available (depending on the configuration) for use to prevent unauthorized access to the device. A user must always have a password set for authentication, and this password should never be shared with anyone. Recommendations for setting strong passwords can be found in [NIST SP 800-63B, section 5.1.1, Memorized Secrets](#).

#### 4.1.2 Two-step Verification

When the work profile is configured for Two-step verification (also called multi-factor or hybrid authentication), the user must provide both a biometric and password to login successfully. The user will see a new option in the Screen Lock Type that will allow the user to configure both components of the authentication credentials.

When the Two-step verification is selected, the user will be prompted to choose the first lock type, which will be a Password. Once the password has been entered, the user will be prompted to enter a biometric from those available for use. If the biometric has not yet been registered, the user will be prompted to re-enter the password before continuing to register the biometric.

The process for entering the password or registering a biometric in the same manner as when used individually (specified in 4.1 User Authentication). The Two-step verification process provides a wizard to register both components at once.

### 4.2 Wi-Fi Connectivity

---

While the administrator may pre-configure some Wi-Fi networks via the EDM, the user has local control over the Wi-Fi connectivity of the device, including the ability to enable/disable Wi-Fi and to connect/reconnect to networks. Detailed instructions for connecting to Wi-Fi networks can be found under the “Connections” section of the guide for the specific device.

Wi-Fi connections can sometimes be dropped (such as when moving out of range). Generally, the device will automatically reconnect to the network once in range, but when this does not happen, following the steps



used to establish a new connection by selecting the available network would start the reconnection. This process will not require re-entry of any configuration information but will start the connection using the configuration already stored.

## 4.3 Bluetooth Connectivity

---

When connecting your device to various other Bluetooth devices it is important to be sure they are properly paired. Some peripherals have no interface for pairing (such as headphones or mice) while others do (such as another smart device or your car). A key difference between these types of devices is whether information can be transferred to them. For example, while you can talk or listen through a Bluetooth headset, it does not store data. Connections to devices that support data transfer capabilities must always be paired explicitly before any use of functionality between them.

Detailed instructions for pairing Bluetooth devices can be found under the “Connections” section of the user guide for the specific device or in the Interactive Guide under “Connections -> Connect to Bluetooth Devices”.

## 4.4 Cellular/Mobile Network Configuration

---

There may be times when it is necessary to limit the type of Cellular network(s) to which a device should be allowed to connect. The device can be configured to connect to specific combinations of network modes such as 5G, LTE, 3G and 2G. The specific options may be limited by a combination of the SIM and the carrier the phone is connected to at any time (such as when roaming).

To change the network modes used to connect to the cellular network, the user can search for “Mobile Networks” in the user guide. Inside the Mobile Networks settings, the user can select “Network Mode” and choose from the available modes. In many cases the selections will have 2 or more modes with (auto connect) specified; this means the device will connect to any of the listed modes to provide the best cellular connection.

## 4.5 Certificate Management

---

While generally certificates would be managed through the EDM, it may be necessary for a user to update the Trust Anchor database locally. A user is not able to change settings managed by the EDM, but is able to add, remove or disable certificates outside the restrictions an EDM may enforce. Detailed instructions for managing certificates locally can be found under the “Credential Storage” section of the user guide for the specific device.

A work profile has an independent Trust Anchor database that is managed separately through the EDM or locally. Managing certificates locally within the work profile will follow the same steps as outside the work profile, but require the user to be authenticated to the work profile to access the settings.

## 4.6 Using the VPN Client

---

### 4.6.1 Always-on Tunnel

When the device has a tunnel configured for Always-on VPN, all traffic will automatically go through this tunnel, and if for some reason a connection for the tunnel cannot be made, no traffic will be allowed to communicate off the device.

### 4.6.2 “Normal” VPN Tunnels

When VPN tunnels are configured and no tunnel is specified as Always-on, then the user must select the tunnel to be used. The user will select the tunnel from those available at **Settings/Connections/More connection settings/VPN**.

## 4.7 Application Permissions

---

Applications may request access to system services, such as location, to support the functionality of the application. When an application is run for the first time, the user will be prompted to allow (or deny) access to the service for the application. Some services may also have an option for allowing access only when the application is running (preventing access when the application is not active on the screen). Unless a choice is made to allow access one time only, the selection made by the user will be remembered across application restarts.

These permissions can be managed on the device later in the Permission manager available at **Settings/Privacy/Permission manager**. Here the permissions for each application can be checked and modified as desired.

## 5 Audit Records

Auditing is enabled and events retrieved through the EDM. A Knox Platform for Enterprise license is required in order to enable the collection of audit records.

Audit records are stored in a compressed format to minimize space and maximize the amount of records that can be stored. When the allocated space is full, the oldest events will be overwritten so the most recent as always maintained (circular logging/buffering). Notifications are sent to the EDM based on the log space becoming full to warn before wrapping occurs.

The minimum amount of allocated space for audit storage is 10MB with a maximum of 50MB, depending on the available free space when activated. There must be at least 200MB of free space when Auditing is enabled (an error is returned to the EDM if not), and no more than 5% of free space will be used, up to the maximum of 50MB. The allocated space is not adjusted after it is initially set.

Within the logging, it is also possible to filter the events that are written to the log.

One important note about the audit capabilities is that they are tied to being enrolled to a management server (EDM). If the device is not enrolled there is no way to enable auditing, and when a device is unenrolled, the audit records are deleted as part of the unenrollment process, so any events created between the last review/upload and the unenrollment will be lost.

### 5.1 Audit Record Fields

#### **KNOX API Logs:**

The KNOX API audit records have eight (8) fields as described in the following table.

Setting	Description
<b>Timestamp</b>	Long value that represents the UTC timestamp
<b>Severity</b>	Integer value representing the severity: 1 (alert), 2 (critical), 3 (error), 4 (warning), 5 (notice)
<b>Group</b>	Integer value representing the group code: 1 (security), 2 (system), 3 (network), 4 (events), 5 (application)
<b>Outcome</b>	Integer value representing the outcome of the event: 1 (success), 0 (failure)
<b>PID</b>	Integer value representing the process ID
<b>USERID</b>	Integer value representing the USERID for which the log was originated ID 0 is for a normal user ID -1 is for system events ID 10-12 or 100-102 is for work profile users (multiple work profiles can be defined, but only one is ever active at one time). IDs 100-102 are for legacy Knox profiles. Separated app profiles will be 10-12.
<b>Component</b>	String representing the facility/Software Component name
<b>Message</b>	Free-form message description of the event (generally a human-readable message)

Table 13 – KNOX API Audit Fields

#### **Security Logs:**

A MDM agent acting as Device Owner can control the logging with [DevicePolicyManager#setSecurityLoggingEnabled](#). When security logs are enabled, device owner apps receive periodic callbacks from [DeviceAdminReceiver#onSecurityLogsAvailable](#), at which time new batch of logs can be collected [viaDevicePolicyManager#retrieveSecurityLogs](#). SecurityEvent describes the type and format of security logs being collected.

Audit events from the Security Log are those where the "Keyword" field appears first in the format. For example: <Keyword> (<Date><Timestamp>): <message>

### **Logcat Logs:**

Logcat logs can be read by a command issued via an ADB shell running on the phone. Information about reading Logcat logs can be found [here](#). The command to issue a dump of the logcat logs is:

```
> adb logcat
```

Logcat logs cannot be exported from the device outside of using the above ADB command to dump to a file, then retrieving the file from the device (which requires developer settings enabled and administrative permissions).

Logcat logs can also be read by an application (for example an MDM agent) granted permission from an ADB shell:

```
> adb shell pm grant <application_package_name> android.permission.READ_LOGS
```

Audit events from the Logcat log are those where the "Keyword" field appears after the timestamp field in the format. For example: Date> <Time> <ID> | <Keyword> <Message>

## **5.2 Audit Events**

---

The list of audit records that are produced related to the functionality claimed in the MDFPP are listed in the attached spreadsheet. The Event column shows what the audit record that is generated, where the information in the <> may vary (such as the status of the setting being measured, or the value being reported). The Description column describes the audit record and may provide additional information about fields that may be displayed.

The WP-C and Legacy configurations both support work profiles, while the managed configuration does not. Auditing is done at both the device and work profiles. Each audit record is marked under each configuration to show where it can be generated.



Audit Event  
Table.xlsx

The events categorized with Common Criteria Status are generated when CC Mode is first enabled and on every device boot sequence thereafter. These events will not be generated again if CC Mode is called, but will only occur during the boot sequence. If the check being made passes, the status will be OK. Otherwise, the message will show corrective actions to be taken.

Most of the management functions for the work profile (such as password management or camera access) generate the same messages as outside the work profile. The messages inside the work profile will be marked with the profile ID (usually 10 or 100 depending on the device).

## 6 Developer References

### 6.1 Cryptographic APIs

This section provides information for developers to utilize the evaluated cryptographic APIs while writing their mobile applications. The Reference Link points to more information about the APIs for the specific cryptographic functions.

Cryptographic Function	Evaluated API	Reference Link
<b>AES-CBC 128/256</b>	javax.crypto.Cipher	<a href="https://developer.android.com">developer.android.com</a>
<b>AES-GCM 128/256</b>	javax.crypto.Cipher	<a href="https://developer.android.com">developer.android.com</a>
<b>SHA-1/256/384/512</b>	java.security.MessageDigest	<a href="https://developer.android.com">developer.android.com</a>
<b>HMAC-SHA-1/256/384/512</b>	javax.crypto.Mac	<a href="https://developer.android.com">developer.android.com</a>
<b>RSA Key Generation</b>	java.security.KeyPairGenerator java.security.KeyFactory	<a href="https://developer.android.com">developer.android.com</a>
<b>ECDSA Key Generation</b>	java.security.KeyPairGenerator	<a href="https://developer.android.com">developer.android.com</a>
<b>RSA Signing/Verification</b>	java.security.Signature	<a href="https://developer.android.com">developer.android.com</a>
<b>RSA Encryption/Decryption</b>	javax.crypto.Cipher	<a href="https://developer.android.com">developer.android.com</a>
<b>ECDSA Signing/Verification</b>	java.security.Signature	<a href="https://developer.android.com">developer.android.com</a>
<b>ECDH Key Agreement</b>	java.security.KeyPairGenerator javax.crypto.KeyAgreement	<a href="https://developer.android.com">developer.android.com</a>
<b>RBG Random Generation</b>	java.security.SecureRandom	<a href="https://developer.android.com">developer.android.com</a>
<b>Certificate Verification</b>	java.security.cert.CertPathValidator	<a href="https://developer.android.com">developer.android.com</a>
<b>Key Import, Use, Destruction</b>	javax.crypto.KeyGenerator java.security.KeyPairGenerator java.security.KeyStore android.security.KeyChain	<a href="https://developer.android.com">developer.android.com</a> <a href="https://developer.android.com">developer.android.com</a>

Table 14 – Cryptographic API Reference

Developers can utilize with the KeyStore or the KeyChain to store their keys/credentials, depending on type of key (symmetric keys can only be stored in the KeyStore). Keys stored in the KeyStore can only be accessed (used or deleted) by the original app or by apps with a common developer with enforcement handled by the KeyStore. Keys stored in the KeyChain can be made globally available (with explicit approval by the user). When a key is imported/created it is assigned authorizations for use which cannot be changed later (i.e. what the key can be used for, how long the key can be available).

### 6.2 Bluetooth APIs

The device provides access to Bluetooth functions through a standard set of APIs. These can be found at [developer.android.com](https://developer.android.com) under [android.bluetooth](https://developer.android.com/bluetooth) and [android.bluetooth.le](https://developer.android.com/bluetooth/le).

## 6.3 TLS/HTTPS APIs

---

The device provides access to TLS & HTTPS functions through a standard set of APIs. These can be found at [developer.android.com](https://developer.android.com) under [javax.net.ssl](https://javax.net/ssl).

## 6.4 Certificate Pinning

---

The device provides the ability for applications to utilize certificate pinning to lock the certificates accepted when accessing web services to only those that are specifically expected. This must be done by the app and is not something the user can set on their own. Information about configuring an app to utilize certificate pinning can be found at [developer.android.com](https://developer.android.com) under [Network Security Configuration](#).

## 6.5 IPsec VPN APIs

---

The device provides the ability to configure IPsec VPN tunnels through a standard set of APIs. These can be found at [developer.android.com](https://developer.android.com) and at the [Samsung Knox SDK API reference](#).

# 7 Device Delivery and Updates

## 7.1 Secure Device Delivery

---

While a Samsung device requires initial configuration before it can be added to the enterprise environment, it is also critical to ensure that the device is received prior to configuration in a secure manner, free from tampering or modification.

It is very important that the devices to be deployed into the enterprise are obtained from reputable carriers to reduce the likelihood that tampering of devices may occur.

Upon receipt, the boxes containing the device should have both a tracking label and two labels placed at either end of the box to indicate whether the box has been opened prior to delivery. If these seals are broken, do not accept the device and return it to your supplier.

The tracking label should look similar to Figure 2 - Tracking Label, while the two tamper labels should appear similar to Figure 3 - Security Seal (Black) or Figure 4 - Security Seal (White).

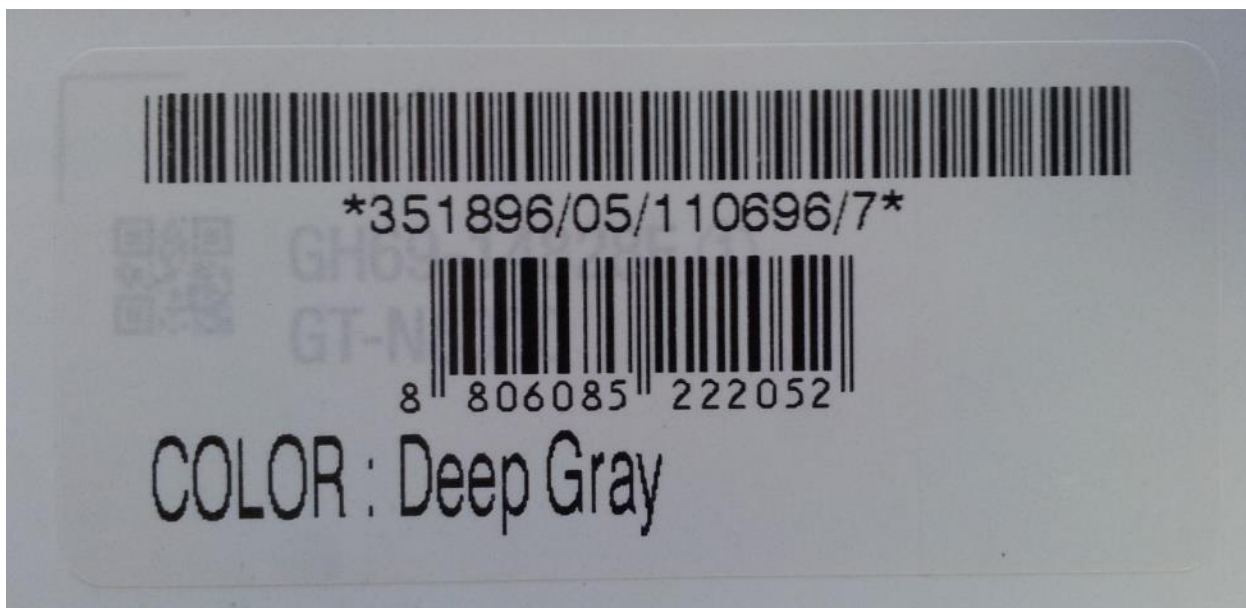


Figure 2 - Tracking Label





Figure 3 - Security Seal (Black)



Figure 4 - Security Seal (White)

### 7.1.1 Evaluation Version

There are a number of components to determining the device that is being used and the components on that device (such as the operating system version, the build version, etc.). These are all contained under Settings/About device. The following are version information that can be found:

- **Model number** – this is the hardware model
- **Android version** – this is the Android OS version
- **Build number** – this is the specific binary image version for the device
- **Security Software Version** – this shows the Common Criteria evaluations and the version of the software components related to those evaluations on the device

For the Common Criteria evaluation version information see section 1.4.2 Device Details.

### 7.1.2 Pre-packaged Software Versions

Samsung Android devices come with large amounts of software apps to provide the full breadth of functionality expected by the customer. Some of the apps come from Google, some from Samsung, and others from the cellular carrier. For a list of the apps and their versions contained on a specific device, visit the website where you can download the CC Mode app and select the device you are using. This will provide a complete list of the software installed on the evaluated device.

#### 7.1.2.1 Software Versions on Device

To verify the versions of any software on the device (compared to the list from the website), open **Settings/Application manager**. Under the heading **All**, you will see every application on the device (both those that are pre-installed and any you have installed). Selecting an application will display its properties. The version number is shown at the top under the name.

**Note:** Using adb (USB debugging must be enabled to use adb) it is possible to extract all package version information at once.

## 7.2 Secure Updates

---

Once a device has been deployed, it may be desirable to accept updates to the software on the device to take advantage of the latest and greatest features of Samsung Android. Updates are provided for devices as determined by Samsung and the carriers based on many factors.

When updates are made available, they are signed by Samsung with a private key that is unique to the device/carrier combination (i.e. a Galaxy S9 on Verizon will not have an update signed with the same key as a Galaxy S9 on AT&T). The public key is embedded in the bootloader image, and is used to verify the integrity and validity of the update package.

When updates are made available for a specific device (they are generally rolled out in phases across a carrier network), the user will be prompted to download and install the update (see the User Guide for more information about checking for, downloading and installing the update). The update package is checked automatically for integrity and validity by the software on the device. If the check fails, the user is informed that there were errors in the update and the update will not be installed.

### 7.2.1 Allowed Update Methods

When CC Mode is enabled, only FOTA updates can be installed on the device. Other methods for installing updates (such as Recovery Mode or Samsung KIES) are blocked and cannot be used to update the firmware. This provides insurance against local, physical attacks that could change the software unknowingly.

### 7.2.2 Blocking Updates

It is possible to block FOTA updates on a device by setting **allowOTAUpgrade()** to be false via the EDM. This can be used either to freeze the software installed or to allow an organization time to test the update before letting it roll out to the user community.

# 8 Operational Security

## 8.1 Modes of Operation

---

The mobile device can be operated in four different modes, depending on the role of the user accessing the device:

- Administrator mode;
- User mode;
- Error mode; and
- Recovery mode

A device is considered to be in Administrator mode before it is delivered to the user. The device is prepared and configured for deployment in the enterprise environment via the Samsung Enterprise SDK. The mobile device administrators are trusted to follow and apply all administrator guidance in a trusted manner. An unprivileged user will not have access to this mode of operation.

If an error or operational failure occurs during the transition from Administrator mode (causing the device to enter the Error mode of operation) to User mode, the administrator should follow the guidance for the EDM he failure and restore the device to normal operational abilities. If it is not possible to adequately eliminate the error or operational failure, the device is not to be delivered to an end user and should be returned to the supplier.

After the device is configured in accordance with the Common Criteria evaluated settings, the device is ready for deployment to a user. When the user receives the device, only the TouchWiz user interface will be visible and no further changes to the security configuration are possible. Once deployed to a user, the device will be operating in User Mode. Within User Mode, the only security relevant functions accessible for the user are 'lock screen password protection', 'change of password' and 'local device wipe'. Typically, an administrator will not access the device in this mode of operation.

The mobile device may also be placed into Recovery mode, bypassing the standard boot process and allowing configuration changes to be made to the installation of Android. However, since this requires the boot loader for the device to be unlocked and is therefore considered out of scope for this environment.

## 8.2 Wiping Data

---

The evaluated security configurations provide the ability to both locally or remotely wipe data work profile level or both.

An enterprise initiated remote wipe command (for either the device or just the work profile, depending on the configuration) occurs under the following conditions:

- The enterprise sends a remote wipe command to the device:
  - when the device has been lost or stolen;
  - in response to a reported incident;

- in an effort to resolve current mobile issues; and
- for other procedural reasons such as when an Android device end user leaves the organization.

### 8.2.1 Wiping the Device

The evaluated security configuration provides for a local and a remote wiping process of Android user devices. This type of wipe works at the storage level and will wipe all data on the device. In a work profile configuration, this will wipe all data including the work profile (as well as everything not in the work profile). This type of wipe is available in all configurations.

The local wipe is manually initiated by the Android device user or after an exceeded number of incorrect login attempts. The remote wipe process is in general remotely initiated by the Enterprise Device Administrator via a remote wipe command.

### 8.2.2 Wiping the Work Profile

When a Work Profile has been created, it is also possible to wipe only the data stored in the work profile. A wipe of the work profile data will remove the work profile, including apps and data, but it will not remove anything outside the work profile. This process must be initiated remotely by the Enterprise Device Administrator via a remote wipe work profile command.

The only way for a user to wipe the work profile is to unenroll the device from the control of the EDM. When this is done the work profile, all data and apps as well as the EDM Agent will all be removed from the device.

## 8.3 Additional Notes on Operational Security

---

Common Criteria Part 3 does require operational user guidance for the following:

- User-accessible functions and privileges that should be controlled in a secure processing environment, including appropriate warnings.
- Secure usage of available interfaces.
- Security parameters of interfaces and functions under the control of the user and their secure values.
- Each type of security-relevant event relative to the user-accessible functions.

Administrators and users are considered to use a Samsung Enterprise device. As described in previous sections of this document, the administrator is responsible for configuration and installation of the device. The end user receives the device in an operational state where no further security configuration is possible. The only user accessible user functions are 'lock screen password protection', 'change of password' and 'local device wipe'.

The user is responsible to obey the provided user guidance and to not actively working against the protection of the device data.

The mobile device Administrators are trusted to follow and apply all administrator guidance, including the EDM guidance in a trusted manner.