

SAMSUNG ELECTRONICS

# Knox E-FOTA On-Premises

## Installation and Initial Operation Guide

**Version : 1.27**

Last Update : Dec 2024

## **[Document History]**

<b>What</b>	<b>Ver.</b>	<b>When</b>
<b>I. Added:</b> Appendix F. Set E-FOTA agent config by managed Configuration <b>II. Updated:</b> 4.8. 2) On DFM Serve <- added how to make pem file for device	<b>Ver1.27</b>	<b>Dec 2024</b>
<b>I. Added:</b> 4.10 (STEP10) Copy Background app files 4.11.1 Start up Background App  <b>II. Updated:</b> 4.3 (STEP03) Create Service Directories ← add directory list 4.4 (STEP04) Install DFM Module Package ← add resource and executable binary 8.2 Terminate Services ← add stop background App	<b>Ver1.26</b>	<b>June 2024</b>
<b>I. Added:</b> 5.8 Configurable device polling interval and postpone waiting time	<b>Ver1.25</b>	<b>Oct 2023</b>
<b>I. Added:</b> 5.7 Configurable device group polling	<b>Ver1.24</b>	<b>Apr 2023</b>
<b>I. Added:</b> 4.2.1 Permanently mount the disk	<b>Ver1.23</b>	<b>Jul 2022</b>
<b>I. Added:</b> 5.6 Configurable length of password digits	<b>Ver1.22</b>	<b>Mar 2022</b>
<b>I. Updated:</b> 4.2. (STEP02) Prepare “Disk partition & mount” for DFM modules ← Picture changed : added haproxy’s “errors” directory (from DFM 1.0.1.1 version) 4.6. (STEP06) Copy Configuration files ← “copy error files” added (from DFM 1.0.1.1 version)	<b>Ver1.22</b>	<b>Nov 2020</b>
<b>I. Added:</b> PART V: Purge DFM Modules ← Remove fully existing installed packages and DFM Modules, in order to no interference between existing and new  <b>II. Updated typos</b>	<b>Ver1.21</b>	<b>July 2020</b>
<b>I. Updated:</b> 7.Update the DFM Module ← During the update, Service may not be available. DFM Module is logged in with a dedicated service account and operates with the privileges of the account. And you should log in with account you used to install before. 7.1.4. DFM Admin Console Update <b>【STEP03】</b> dfm config set mysql_img_tag=xx.xx.xx → dfm config set console_img_tag=xx.xx.xx  <b>【STEP04】</b> dfm config get mysql_img_rep → dfm config get console_img_rep dfm config get mysql_img_tag → dfm config get console_img_tag 7.1.5.HAProxy update <b>【STEP04】</b> dfm config get mysql_img_rep → dfm config get haproxy_img_rep dfm config get mysql_img_tag → dfm config get haproxy_img_tag	<b>Ver1.2</b>	<b>June 2020</b>
<b>I. Added:</b> 4.2. (STEP02) Prepare “Disk partition & mount” for DFM modules 5.4. Updating the SSL Certificate when the old certificate is expired 5.5. DB Backup & Restore 6.2. (STEP02) Prepare “mount” for DFM module Appendix C. Summary for Software Recommendation	<b>Ver1.1</b>	<b>June 2020</b>

**Installation and Initial Operation Guide for Knox E-FOTA On-Premises**

<p>Appendix E. An <b>Example</b> of “Notice for Completion Installation”</p> <p><b>II. Updated:</b>                  2. Environment Prerequisites                  4.7. (STEP07) Set-up Configuration                  4.8. (STEP08) Configure HAProxy                  5.1. How to access to admin console page after installing                  5.4 Updating the SSL Certificate when the old certificate is expired                  Appendix D. A Recommended Schedule for On-Site Installation by CSO/TEO</p> <p><b>III. Deleted “2.3.3. Product – “Commercial B””</b>                  It will be updated along with HA later</p> <p><b>IV. Changed DFM directory</b>                  ./dfm/logs/console → ./dfm/console/logs                  ./dfm/logs/core → ./dfm/core/logs</p> <p><b>V. Corrected a couple of typos</b></p>		
<p><b>Initial Release</b></p>	<p><b>Ver1.0</b></p>	<p><b>Mar 2020</b></p>

## Table of Contents

---

PART I: Getting Started .....	7
1. Introduction .....	8
1.1. Purpose of this document.....	8
2. Environment Prerequisites.....	9
2.1. Hardware Recommended.....	9
2.2. Software Recommended .....	9
2.2.1. Operating System.....	9
2.2.2. Docker.....	10
2.2.3. Database (MySQL).....	10
2.2.4. HTTPS.....	10
2.3. Recommendation Per each Product usage.....	10
2.3.1. Product – “PoC” .....	10
2.3.2. Product – “Commercial” .....	11
3. Deliverables.....	13
3.1. DFM Modules.....	13
3.2. Security Considerations .....	13
3.2.1. HTTPS and Network encryption .....	14
3.3. Supported Browser .....	14
PART II: Installation, and Validation.....	15
4. Installation & Configuration .....	16
4.1. (STEP01) Create Service Account and Login.....	16
4.2. (STEP02) Prepare “Disk partition & mount” for DFM modules.....	16
4.2.1. Permanently mount the disk .....	19
4.3. (STEP03) Create Service Directories.....	19
4.4. (STEP04) Install DFM Module Package .....	21
4.5. (STEP05) Load Docker Image .....	24
4.6. (STEP06) Copy Configuration files.....	24
4.7. (STEP07) Set up Configuration .....	26
4.8. (STEP08) Configure HAProxy.....	32
4.9. (STEP09) Create Container Network.....	35
4.10. (STEP10) Copy Background app files.....	35
4.11. (STEP11) Start up and Initializing the DFM Modules .....	36
4.11.1 Start up Background App.....	36
4.11.2 Start up and Initialize MySQL Server (DFM DB) .....	36
4.11.3 Start up Firmware Storage Server.....	38
4.11.4 Start up DFM Core Server .....	38
4.11.5 Start up DFM Admin Console Server .....	39
4.11.6 Start up HAProxy Server .....	39
4.12. How to check Server Operation Status .....	40
PART III: Initial Operation.....	41
5. Service Operation.....	42
5.1. How to access the admin console page after installation.....	42
5.2. The Contents Upload .....	43

## Installation and Initial Operation Guide for Knox E-FOTA On-Premises

5.3.	Troubleshooting and Logging during using the Service .....	43
5.4.	Updating the SSL Certificate when the old certificate is expired .....	43
5.5.	DB Backup & Restore. ....	44
5.5.1.	Backup a MySQL Server Instance.....	45
5.5.2.	Restore a MySQL Server Instance .....	46
5.6.	Configurable length of password digits .....	47
5.7.	Configurable Device Group polling .....	48
5.8.	Configurable device polling interval and postpone waiting time .....	50
6.	When a Server is Rebooted .....	51
6.1.	(STEP01) Login as the dedicated service account .....	51
6.2.	(STEP02) Prepare “mount” for DFM modules.....	51
6.3.	(STEP03) Start up Docker .....	53
6.4.	(STEP04) Start-up Database Server (MySQL) .....	53
6.5.	(STEP05) Start-up Firmware Storage Server .....	54
6.6.	(STEP06) Start-up DFM Core Server .....	54
6.7.	(STEP07) Start-up DFM Admin Console Server .....	55
6.8.	(STEP08) Start-up HAProxy Server .....	55
6.9.	(STEP09) Check Server Operation Status .....	56
PART IV: Update the DFM Modules .....		57
7.	Update the DFM Module.....	58
7.1.	Docker Image Update .....	58
7.1.1.	DFM Database Update (MySQL) .....	58
7.1.2.	DFM Firmware Storage Update (MinIO) .....	59
7.1.3.	DFM Core Update .....	59
7.1.4.	DFM Admin Console Update.....	60
7.1.5.	HAProxy update .....	61
7.2.	The Contents Update .....	61
PART V: Purge DFM Modules.....		62
8.	Purge the DFM Modules.....	63
8.1.	Purge the installed Debian package.....	63
8.2.	Terminate Services.....	63
8.3.	Remove Service directory .....	64
PART VI: APPENDICES .....		65
APPENDICES.....		66
Appendix A. Terms and Abbreviations.....		66
Appendix B. How to terminate each DFM Module .....		67
Appendix C. Summary for Software (S/W) Recommendation .....		68
Appendix D. A Recommended Schedule for On-Site Installation by CSO/TEO .....		69
Appendix E. An Example of “Notice for Completion Installation” .....		71
Appendix F. Set E-FOTA agent config by managed Configuration .....		72

## Tables of Figures & Tables

---

### **Figures**

Fig 2-1 Knox E-FOTA On-Premises Product Arch for “PoC” .....	11
Fig 2-2 Knox E-FOTA On-Premises Product Arch for “Commercial” .....	12
Fig 3-1 Knox E-FOTA On-Premises Conceptual Architecture .....	13
Fig 4-1 An Disk Partitions for DMF Module.....	16
Fig 4-2 IP-based Access Environment .....	27
Fig 4-3 Domain-Based Access Environment (Type A) .....	27
Fig 4-4 Domain-Based Access Environment (Type B).....	28
Fig 4-5 Domain-Based Access Environment (Type C).....	28
Fig 4-6 On Customer’s Load Balancer (Proxy) .....	32
Fig 4-7 On DFM Server .....	33
Fig 4-8 On DFM Server .....	34
Fig 5-1 The Admin Console for Knox E-FOTA On-Premises .....	42
Fig 6-1 A dedicated disk for DFM module.....	51

### **Tables**

Table 2-1 The Hardware Recommended for user work environment to this On-Premise .....	8
Table 2-2 The Software Recommended for user work environment to this On-Premise.....	8
Table 2-3 The Minimum Hardware Recommendation for “PoC” .....	9
Table 2-4 The Software Recommendation for “PoC” .....	10
Table 2-5 The Minimum Hardware Recommendation for “Commercial” .....	11
Table 2-6 Software Recommendation for “Commercial” .....	11

## **PART I: Getting Started**

---

PART 1: Getting Started presents the purpose of this document, what customer infrastructure is recommended prior to the installation of the Knox E-FOTA On-Premises service, and provides an overview of deliverables that will be used during the installation.

## 1. Introduction

---

### 1.1. Purpose of this document

The purpose of this document is to present how to plan for, install, and configure the managed DFM module within the customer's network. This document includes information about how to install and configure the 3<sup>rd</sup> party software, such as Docker, and provides detailed descriptions of the commands used to perform its installations.

This document is intended **for the personnel who are in charge of performing the installation.**

In order to prepare the installer, this document includes the following tasks:

- Evaluate the customer's network and hardware facilities
- Introduce which modules will be installed to provide this service
- Explain the install flow with DFM Modules
- Explain how to configure the installed DFM Modules with the proper conditions
- Explain how to test if the installed DFM Modules are running as expected

The server infrastructure, hereafter referred to as **DFM Modules**, will be installed on the customer's side by Samsung to service the Knox E-FOTA On-Premises environment.

We recommend "The 4-Days Installation" for this installation, as the customer should understand how they are using this service during this program (see "[Appendix D. A Recommended Schedule for On-Site Installation by CSO/TEO](#)").



## 2. Environment Prerequisites

This chapter presents the hardware, software and network facilities required by the DFM. To ensure proper support of E-FOTA On-Premise, the service must be installed upon the following recommended software and hardware infrastructure.

The following recommended items should be prepared by the customer prior to the installation of the Knox E-FOTA On-Premises service by Samsung personnel.

### 2.1. Hardware Recommended

The recommended user environment, including the network card, for the On-Premises Hardware (H/W) requirements are as follows (the customer can choose the correct value depending on the product type. See "[2.3 Recommendation Per each Product Usage](#)"):

Items	Recommended Value	Description
Server CPU Cores	Above 4 or 8 CPU Cores	4 Cores is for PoC Product Above 8 Cores is for Commercial Product
RAM	16 or 32 GB	16GB is for PoC Product 32GB is for Commercial Product
Disk	1TB or 2TB SSD	For DFM Module 1TB (PoC), 2TB (Commercial Product)
	256 GB	For System region (OS and Root filesystem)
Network Card	Above 10 Gbps	

**Table 2-1 The Hardware Recommended for the Knox E-FOTA On-Premises user work environment**

The recommendations in the above table are the minimum specifications to run this On-Premises Service. User performance expectations may require additional infrastructure resources that exceed the minimum specifications.

### 2.2. Software Recommended

The recommended user work environment, including the network, for this On-Premises Software (S/W) requirements are as follows:

Items	Recommended Value	Description
Operating System	Ubuntu Server 18.04.3 LTS or 22.04.4 LTS	
Docker Engine	Community Edition (Ubuntu)	
MySQL Edition	Enterprise Edition	For Commercial Product

**Table 2-2 The Software Recommended for the Knox E-FOTA On-Premises user work environment**

Refer to "[Appendix C](#)" for a summary of software recommendations.

#### 2.2.1. Operating System

By default, the DFM Server requires Ubuntu Server 18.04.3 LTS or 22.04.4 LTS for the OS. It should be installed on 64-bit Intel x86, ARM, or MIPS architectures in order to support Docker.

### 2.2.2. Docker

Docker is a tool designed to make it easier to create, deploy, and run applications by using containers. Containers allow a developer to package up an application with all of the parts it needs, such as libraries and other dependencies, and deploy it as one package. By doing so, thanks to the container, the application will run on any other Linux machine regardless of any customized settings that machine might have that could differ from the machine used for writing and testing the code.

In a way, Docker is like a virtual machine. Unlike a virtual machine, however, rather than creating a whole virtual operating system, Docker allows applications to use the same Linux kernel as the system it's running on and only requires applications be shipped with things not already running on the host computer. This provides a significant performance boost and reduces the size of the application. In this On-Premises service, **the Community version** for Ubuntu will be using Docker. This version can be downloaded from "[download.docker.com](https://download.docker.com)".

### 2.2.3. Database (MySQL)

The MySQL database contains all service-related data, including device models, their IDs, and policy dependencies in Campaigns.

### 2.2.4. HTTPS

To use the https protocol between Samsung mobile devices and the DFM Modules, the customer should prepare a DNS hostname (FQDN) and public (or private) SSL certificates.

## 2.3. Recommendation Per each Product usage

Knox E-FOTA On-Premises has 3 types of product use case architecture recommendations, including 2 Commercial and 1 POC architecture.

### 2.3.1. Product – “PoC”

The **PoC** product is recommended if a customer wants to use the on-premises service to understand its functions and product configuration clearly prior to purchasing a Commercial Product, along with a small number of devices (clients, until 300 devices). The PoC product can run on lower specification hardware than the Commercial product, but the table below contains the minimum specifications to be running Knox E-FOTA On-Premises. To ensure the service runs as expected, the customer should set up the infrastructure with higher specifications than shown below.

#### 【Minimum H/W Recommendation】

Items	Recommended Value	Description
Server CPU Cores	4 CPU Cores	
RAM	16 GB	
Disk	1TB SSD	For DFM Module
	256 GB	For System region (OS and Root filesystem)
Network Card	Above 10 Gbps	

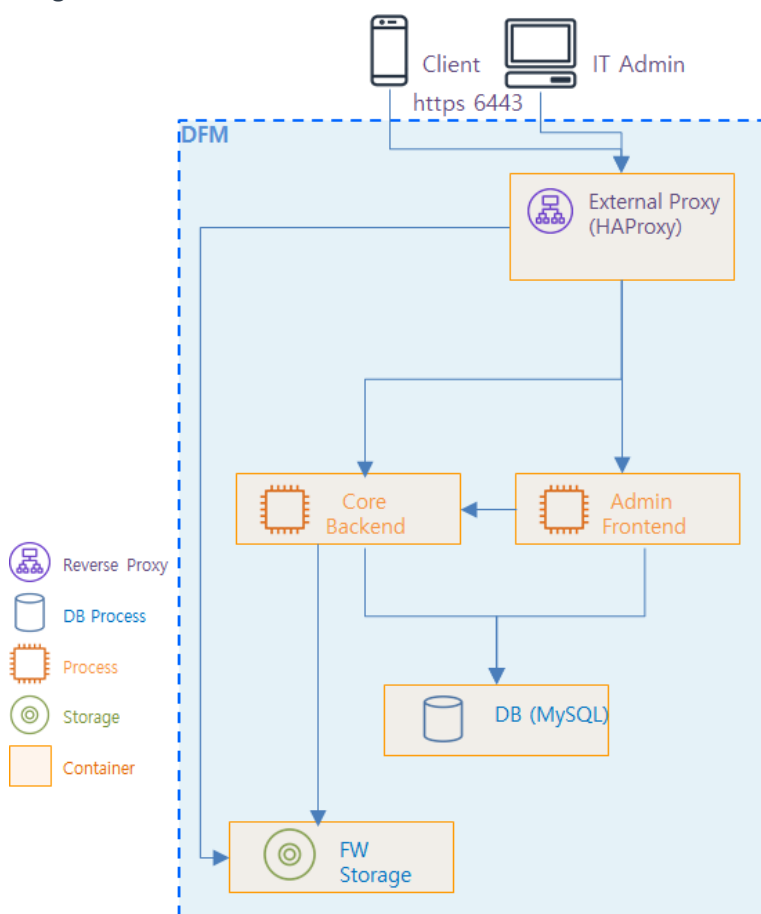
Table 2-3 The Minimum Hardware Recommendation for PoC

**[S/W Recommendation]**

Items	Recommended Value	Description
Operating System	Ubuntu Server 18.04.3 LTS or 22.04.4 LTS	
Docker Engine	Community Edition (Ubuntu)	
MySQL Edition	Community Edition	For continuous Commercial support, recommend Enterprise Edition

**Table 2-4 The Software Recommendation for “PoC”**

The customer can purchase Ubuntu OS based on this service package, depending on their service environment. Note that the customer must provide the service infrastructure to the Samsung representative in charge of the installation.



**Fig 2-1 Knox E-FOTA On-Premises Product Arch for PoC**

**2.3.2. Product – “Commercial”**

The **Commercial** product is recommended for customers who want to use this product with a maximum of 20,000 devices for device firmware updates over-the-air (FOTA), but it also supports more than 20,000 devices.

The recommended specification for the infrastructure is the minimum required to be running the service. To optimize performance expectations, the customer may need to provide infrastructure with higher specifications than the below table to the Samsung representative in charge of the installation.

**[Minimum H/W Recommendation]**

Items	Recommended Value	Description
Server CPU Cores	8 CPU Cores	
RAM	32 GB	
Disk	2TB SSD	For DFM Module
	256 GB	For System region (OS and Root filesystem)
Network Card	Above 10 Gbps	

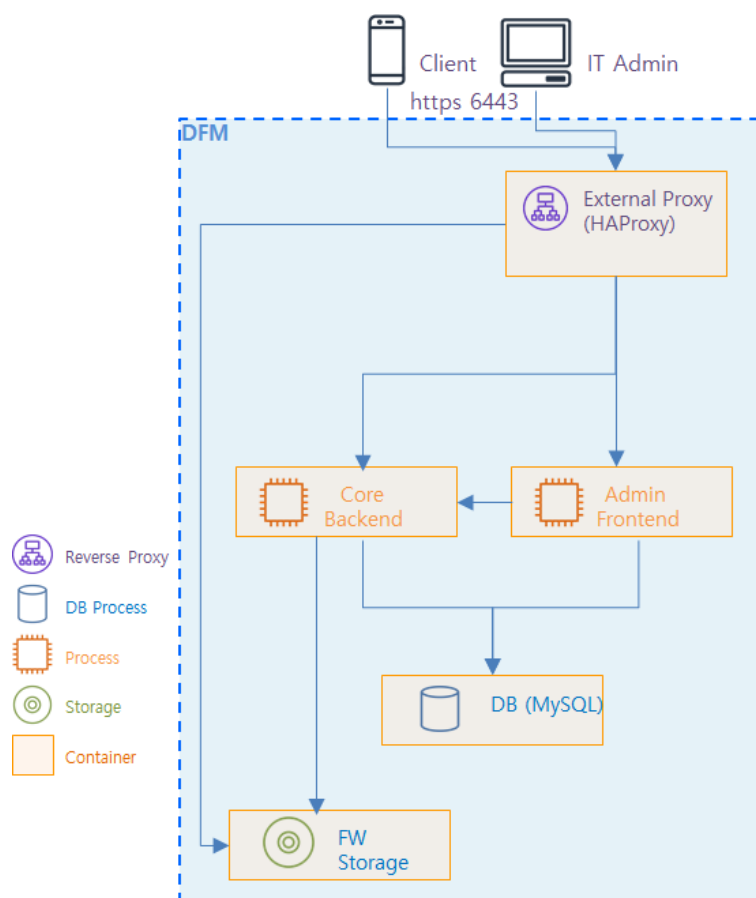
**Table 2-5 The Minimum Hardware Recommendation for “Commercial”**

**[S/W Recommendation]**

The customer can purchase Ubuntu OS based this service package, depending on their service environment. Note that the customer must provide the service infrastructure to the Samsung representative in charge of the installation.

Items	Recommended Value	Description
Operating System	Ubuntu Server 18.04.3 LTS or 22.04.4 LTS	
Docker Engine	Community Edition (Ubuntu)	
MySQL Edition	Enterprise Edition	

**Table 2-6 Software Recommendation for “Commercial”**



**Fig 2-2 Knox E-FOTA On-Premises Product Arch for “Commercial”**

### 3. Deliverables

This chapter describes the actions performed by Samsung to deliver the Knox E-FOTA On-Premises environment.

#### 3.1. DFM Modules

The DFM Module consists of the following core modules:

- **DFM Admin Console Server:** The Frontend module to provide IT admins with an accessible graphical user interface (GUI) on the Google Chrome browser.
- **DFM Core Server:** The Backend module to manage device (client application) actions, integrated into the device using RESTful APIs from the client.
- **DFM Database:** The MySQL-based database contains all service-related data, including device models, their IDs, and policy dependencies in Campaigns.
- **DFM Firmware Storage Management:** The firmware files for downloaded files from the client application.
- **Proxy:** This is used for redirection between outer and DFM modules, and for AP Gateway and TLS/SSL termination

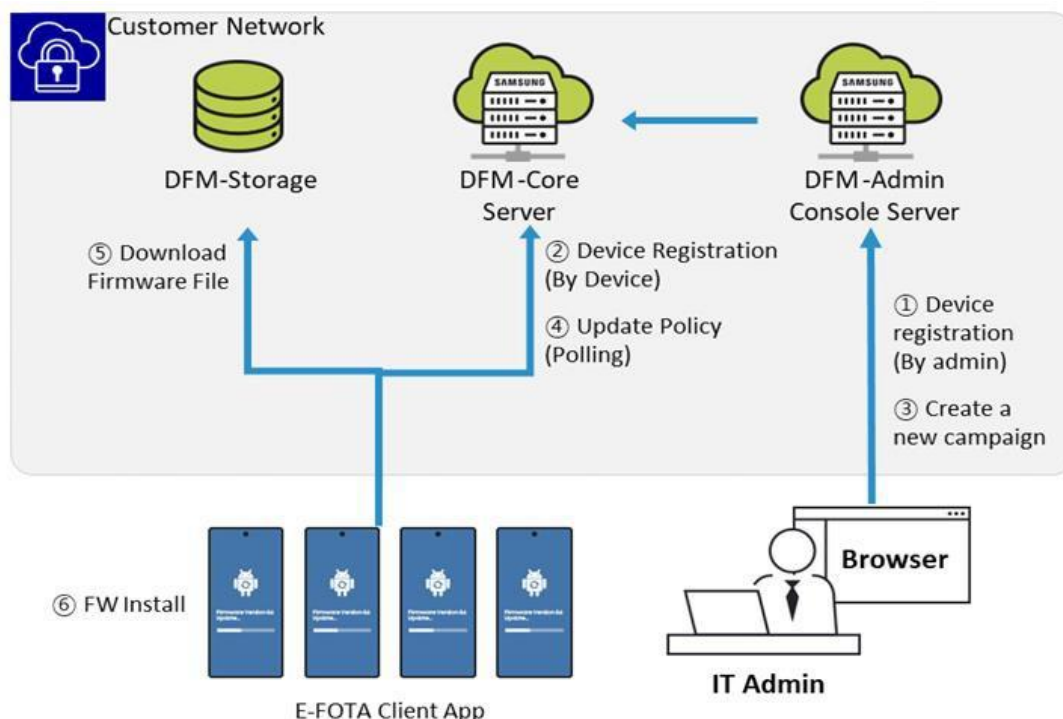


Fig 3-1 Knox E-FOTA On-Premises Conceptual Architecture

#### 3.2. Security Considerations

In order to improve the default security of the Samsung deliverable, it must be implemented using the following standards.

### 3.2.1. HTTPS and Network encryption

The DFM Module uses HTTPS TLS-based encryption to enhance the security of transactions. The Transport Layer Security (TLS) protocol provides data encryption and verification between applications and servers in scenarios where data is being sent across an insecure network—for example, when working with the DFM Module.

HTTPS header fields are components of the header section of HTTPS request and response messages. They define the operating parameters of a HTTPS transaction. The load balancer and reverse proxy are in front of the DFM Module queries.

### 3.3. Supported Browser

**PLEASE NOTE** that this version of the DFM Console UI is designed for **Google Chrome** only.

## **PART II: Installation, and Validation**

---

PART II: Installation and Validation describes how to install the Knox E-FOTA On-Premises service on the customer-provided infrastructure, and how to validate the installed service infrastructure.

## 4. Installation & Configuration

This chapter explains the first-time installation flow with proper configuration conditions of the DFM Modules. Steps in this chapter run only once during initial installation.

The **Docker Engine** must already be installed **prior to** following this installation process.

### 4.1. (STEP01) Create Service Account and Login

The DFM Module is logged in with a **dedicated service account** and operates with the privileges of the account. Therefore, the dedicated service account has to be created in the server. The service account also needs the “**sudo**” privilege as a Docker requirement for command permissions. Ensure you add your service account into the Docker group.

We recommend that you create a service account before you start the installation.

The below shows you how to add your service account into the Docker group:

We assume that you are using the “**nightwatch**” account.

```
$ sudo usermod -aG docker {your-user}
```

Example)

```
sudo usermod -aG docker nightwatch
```

### 4.2. (STEP02) Prepare “Disk partition & mount” for DFM modules

DFM module is installed in and operates in the below directory on the **dedicated disk**.

Therefore, we should check if the dedicated disk exists and the “partition & mount” is ready, in case the customer has not worked with the disk partition for the DFM module before.

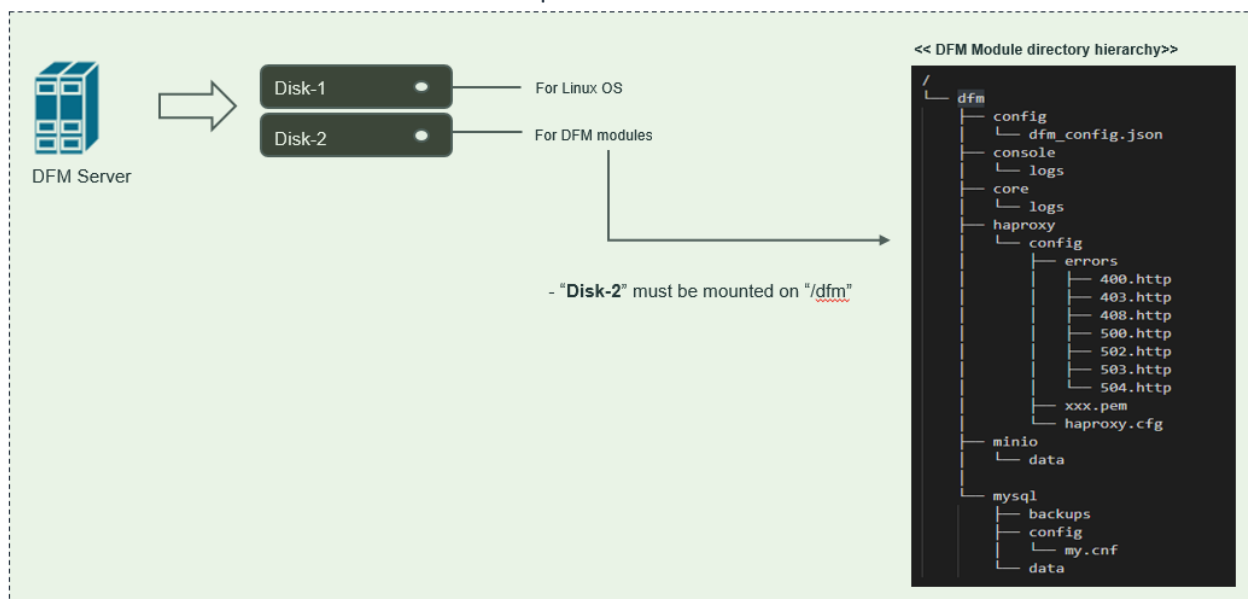


Fig 4-1 An Disk Partitions for DMF Module



For example, we assume that two disks (“sda” and “sdb”) exist.

**[CASE01] Disk is Ready**

If the disks exist, we don’t need to format and mount them.

Now, let’s check the disk information:

```
sudo lsblk -p
```

```
NAME                MAJ:MIN RM  SIZE RO TYPE MOUNTPOINT
-----
/dev/sda            202:0    0    1T  0 disk
└─/dev/sda1        202:1    0    1T  0 part /
/dev/sdb            202:80   0    1T  0 disk
```

```
sudo lsblk -f
```

```
NAME      FSTYPE  LABEL          UUID                                 MOUNTPOINT
-----
sda
└─sda1  ext4    xxxxxxxx-rootfs 6156ec80-9446-4eb1-95e0-9ae6b7a46187 /
sdb      ext4                                d3269ceb-4418-45d0-ba68-d6b906e0595d /dfm
```

⇒ “sdb” is already formatted and mounted on /dfm

```
sudo file -s /dev/sdb
```

```
/dev/sdb: Linux rev 1.0 ext4 filesystem data, UUID=d3269ceb-4418-45d0-ba68-d6b906e0595d (extents) (64bit) (large files) (huge files)
```

**[CASE02] Disk is NOT Ready: it is not formatted**

If the disk is not ready, it needs to be formatted and mounted on /dfm.

Now, let’s check the disk information:

```
sudo lsblk -p
```

```
NAME                MAJ:MIN RM  SIZE RO TYPE MOUNTPOINT
-----
/dev/sda            202:0    0    1T  0 disk
└─/dev/sda1        202:1    0    1T  0 part /
/dev/sdb            202:80   0    1T  0 disk
```

```
sudo lsblk -f
```

```
NAME      FSTYPE  LABEL          UUID                                 MOUNTPOINT
-----
sda
└─sda1  ext4    xxxxxxxx-rootfs 6156ec80-9446-4eb1-95e0-9ae6b7a46187 /
sdb
```

⇒ “sdb” is NOT formatted

```
sudo file -s /dev/sdb
```

```
/dev/sdb: data
```

## Installation and Initial Operation Guide for Knox E-FOTA On-Premises

⇒ This means that the disk needs to be formatted

### 1) Format with ext4 file-system

```
sudo file -s /dev/sdb
```

```
sudo mkfs -t ext4 /dev/sdb
mke2fs 1.44.1 (24-Mar-2018)
Creating filesystem with 2621440 4k blocks and 655360 inodes
Filesystem UUID: d3269ceb-4418-45d0-ba68-d6b906e0595d
Superblock backups stored on blocks:
    32768, 98304, 163840, 229376, 294912, 819200, 884736, 1605632

Allocating group tables: done
Writing inode tables: done
Creating journal (16384 blocks): done
Writing superblocks and filesystem accounting information: done
```

### 2) Check if the disk is formatted

```
sudo mkfs -t ext4 /dev/sdb
```

```
/dev/sdb: Linux rev 1.0 ext4 filesystem data, UUID=d3269ceb-4418-45d0-ba68-d6b906e0595d (extents) (64bit) (large files) (huge files)
```

### 3) Mount “/dev/sdb” on /dfm

```
// create directory to mount
```

```
sudo mkdir /dfm
```

```
// mount
```

```
sudo mount /dev/sdb /dfm
```

### 4) Verify

```
df -h
```

```
Filesystem      Size  Used Avail Use% Mounted on
/dev/sdb         9.8G   37M   9.3G   1% /dfm
```

**[CASE03] Disk is NOT Ready: it is already formatted but not yet mounted on /dfm**

If the disk is formatted but not yet mounted, it needs to be mounted on /dfm.

Now, let's check the disk information:

```
sudo lsblk -p
```

```
NAME            MAJ:MIN RM  SIZE RO TYPE MOUNTPOINT
/dev/sda         202:0    0   1T  0 disk
└─/dev/sda1      202:1    0   1T  0 part /
/dev/sdb         202:80   0   1T  0 disk
```

```
sudo lsblk -f
```

```
NAME     FSTYPE LABEL          UUID                                 MOUNTPOINT
sda
└─sda1   ext4   xxxxxxxx-rootfs 6156ec80-9446-4eb1-95e0-9ae6b7a46187 /
sdb      ext4                                     d3269ceb-4418-45d0-ba68-d6b906e0595d
```

⇒ “sdb” is formatted but Not yet mounted

### 1) Mount /dev/sdb on /dfm

```
// create directory to mount
sudo mkdir /dfm
```

```
// mount
sudo mount /dev/sdb /dfm
```

### 2) Verify

```
df -h
```

```
Filesystem      Size  Used Avail Use% Mounted on
/dev/sdb        9.8G   37M  9.3G   1% /dfm
```

## 4.2.1 Permanently mount the disk

We recommend that the customer's IT manager sets the boot script so that the dedicated disk is auto-mounted when the server is booted.

If the customer's IT manager has not set the boot script for disk auto-mounting, you should proceed according to the command below.

\*) If the settings are incorrect, Booting may not be possible. Also the command below is a general situation, and option may differ depending on the customer system situation. Please refer to the “fstab” manual for details.

### 1) Check mount /dev/sdb on /dfm

```
sudo lsblk -f
```

```
NAME      FSTYPE LABEL          UUID                                 MOUNTPOINT
sda
└─sda1   ext4      xxxxxxxx-rootfs 6156ec80-9446-4eb1-95e0-9ae6b7a46187 /
sdb      ext4      d3269ceb-4418-45d0-ba68-d6b906e0595d /dfm
```

### 2) Edit /etc/fstab file

Please add the contents corresponding to “sdb” to the new line.

```
vi /etc/fstab

~
~
UUID=d3269ceb-4418-45d0-ba68-d6b906e0595d /dfm ext4 defaults 0 0
```

## 4.3. (STEP03) Create Service Directories

A separated service directory configuration is required to install and operate the Samsung DFM Module. The service account must have “**read / write / execute**” permissions to the service directory. The service directory should be mounted in a different device location from the OS installation area.

### 【Service Directory List】

<p><b>/dfm/mysql/config</b> ⇒ that is where the config file is referenced when the mysql server starts.</p> <p><b>/dfm/mysql/data</b> ⇒ that is where databases are created when mysql server runs.</p> <p><b>/dfm/mysql/backups</b> ⇒ that is where databases are backed-up when mysql server runs.</p> <p><b>/dfm/minio/data/dfm-agent-storage</b> ⇒ that is where efota client APK files are uploaded when minio server runs.</p> <p><b>/dfm/minio/data/dfm-fw-storage</b> ⇒ that is where firmware binary files are uploaded when minio server runs.</p> <p><b>/dfm/haproxy/config</b> ⇒ that is where the config file is referenced when haproxy server starts.</p> <p><b>/dfm/console/logs</b> ⇒ that is where log files are generated when admin console server runs.</p> <p><b>/dfm/core/logs</b> ⇒ that is where log files are generated when core server runs.</p> <p><b>/dfm/config</b> ⇒ that is where the config file contains the information needed to run the DFM module.</p> <p><b>/dfm/background</b> ⇒ that is where the background app for license check.</p>
---

Now, let's create each service directory.

```
sudo mkdir -p /dfm/mysql/config
sudo mkdir -p /dfm/mysql/data
sudo mkdir -p /dfm/mysql/backups
sudo mkdir -p /dfm/minio/data/dfm-agent-storage
sudo mkdir -p /dfm/minio/data/dfm-fw-storage
sudo mkdir -p /dfm/haproxy/config
sudo mkdir -p /dfm/console/logs
sudo mkdir -p /dfm/core/logs
sudo mkdir -p /dfm/config
sudo mkdir -p /dfm/background
```

Set the service account's permission for the created service directory.

We assume that you are using the “nightwatch” account.

```
sudo chown -R nightwatch:nightwatch /dfm
sudo chown -R nightwatch:nightwatch /dfm/mysql
sudo chown -R nightwatch:nightwatch /dfm/minio
sudo chown -R nightwatch:nightwatch /dfm/haproxy
sudo chown -R nightwatch:nightwatch /dfm/mysql/config
sudo chown -R nightwatch:nightwatch /dfm/mysql/data
sudo chown -R nightwatch:nightwatch /dfm/mysql/backups
sudo chown -R nightwatch:nightwatch /dfm/minio/data
sudo chown -R nightwatch:nightwatch /dfm/minio/data/dfm-agent-storage
sudo chown -R nightwatch:nightwatch /dfm/minio/data/dfm-fw-storage
sudo chown -R nightwatch:nightwatch /dfm/haproxy/config
sudo chown -R nightwatch:nightwatch /dfm/console/logs
sudo chown -R nightwatch:nightwatch /dfm/core/logs
sudo chown -R nightwatch:nightwatch /dfm/config
sudo chown -R nightwatch:nightwatch /dfm/background
```

### 4.4. (STEP04) Install DFM Module Package

The DFM Module will either be delivered as a debian package or an rpm package tool. This package contains the following resources:

- executable binary (dfm): managed command to run DFM module
- docker images: docker image about DFM module
- sql query file: DFM module’s DB data to initialize mysql
- mysql config file (my.cnf): config file for mysql
- haproxy config file (haproxy.cfg): config file for haproxy
- dfm config file (dfm\_config.json): config file for DFM module
- background app files (licenseApp, efota-license.service): background app for license check

## Installation and Initial Operation Guide for Knox E-FOTA On-Premises

To install these resources, the files have to be unpacked within the following locations by the host. The files will be used during: **1) Docker Image load**, **2) initializing MySQL DB**, and **3) Copying the config file** to the service directory.

- executable binary:
  - ⇒ /usr/bin/dfm
  - ⇒ /tmp/dfm/licenseApp
- service excute script
  - ⇒ /etc/systemd/system/efota-license.service
- docker images:
  - ⇒ /tmp/dfm/docker-images/dfm-haproxy-xxx.tar
  - ⇒ /tmp/dfm/docker-images/dfm-minio-xxx.tar
  - ⇒ /tmp/dfm/docker-images/dfm-mysql-xxx.tar
  - ⇒ /tmp/dfm/docker-images/dfm-console-xxx.tar
  - ⇒ /tmp/dfm/docker-images/dfm-core-xxx.tar
- sql query file:
  - ⇒ /tmp/dfm/mysql-query/init\_db.sql
  - ⇒ /tmp/dfm/mysql-query/init\_dfm\_core.sql
  - ⇒ /tmp/dfm/mysql-query/init\_dfm\_console.sql

## Installation and Initial Operation Guide for Knox E-FOTA On-Premises

```
- mysql config file:  
  => /tmp/dfm/mysql-config/my.cnf  
  
- haproxy config file:  
  => /tmp/dfm/haproxy-config/haproxy.cfg  
  
- dfm config file:  
  => /tmp/dfm/dfm_config.json
```

The following is a command showing how to install the debian package:

```
sudo dpkg -i xxx.deb  
  
example)  
sudo dpkg -i dfm_0.6.1.deb  
Selecting previously unselected package dfm.  
(Reading database ... 229646 files and directories currently installed.)  
Preparing to unpack dfm_0.6.1.deb ...  
Unpacking dfm (0.6.1) ...  
Setting up dfm (0.6.1) ...
```

Next, check if the necessary files exist:

```
1) check dfm file  
ls /usr/bin/dfm  
/usr/bin/dfm  
  
2) check docker images  
ls /tmp/dfm/docker-images/ -l  
total 810548  
-rw-rw-r-- 1 dfm-console-2.0.0-20200129034450.health.tar  
-rw-rw-r-- 1 dfm-core-0.6.2.b_no_auth.health.tar  
-rw-rw-r-- 1 dfm-haproxy-2.1.2.health.tar  
-rw-rw-r-- 1 dfm-minio-RELEASE.2020-01-25T02-50-51Z.health.tar  
-rw-rw-r-- 1 dfm-mysql-5.7.25.health.tar  
  
3) check sql query file  
ls /tmp/dfm/mysql-query/ -l  
total 2076  
-rw-r--r-- 1 init_db.sql  
-rw-r--r-- 1 init_dfm_console.sql  
-rw-r--r-- 1 init_dfm_core.sql  
  
4) check mysql config file : my.cnf  
ls /tmp/dfm/mysql-config/ -l  
total 4  
-rw-r--r-- my.cnf  
  
5) haproxy config file : haproxy.cfg
```

```
ls /tmp/dfm/haproxy-config/
haproxy.cfg
```

6) dfm config file : dfm\_config.json

```
ls /tmp/dfm/dfm_config.json
/tmp/dfm/dfm_config.json
```

7) background app files : licenseApp, efota-license.service

```
ls /tmp/dfm/licenseApp
/tmp/dfm/licenseApp
ls /etc/systemd/system/efota-license.service
/etc/systemd/system/efota-license.service
```

## 4.5. (STEP05) Load Docker Image

Next, register the Docker Images that were unpacked at “/tmp/dfm/docker-images”. The loaded Docker Images are used when the container is driven. The following shows how to load each Docker Image using Docker commands:

```
docker load < /tmp/dfm/docker-images/dfm-haproxy-xxx.tar
docker load < /tmp/dfm/docker-images/dfm-minio-xxx.tar
docker load < /tmp/dfm/docker-images/dfm-mysql-xxx.tar
docker load < /tmp/dfm/docker-images/dfm-console-xxx.tar
docker load < /tmp/dfm/docker-images/dfm-core-xxx.tar
```

(For more information on how to replace “XXX” properly, please see “How to install the package from the debian package tool” in “[4.3 \(STEP03\) Install DFM Module Package](#)”)

Next, check if the 5 Docker images were loaded. Use the “Docker Images” command:

Example)

### docker images

REPOSITORY	TAG	IMAGE ID	CREATED	SIZE
dfm-core	0.6.2.b_no_auth.health	62c236d15854	About an hour ago	124MB
dfm-console	2.0.0-20200129034450.health	d63dec253531	About an hour ago	169MB
dfm-haproxy	2.1.2.health	88bf690bd83f	6 days ago	99.7MB
dfm-mysql	5.7.25.health	1cc730cc6555	8 days ago	372MB
dfm-minio	RELEASE.2020-01-25T02-50-51Z.health	aee72e79b55b	8 days ago	53.7MB

## 4.6. (STEP06) Copy Configuration files

After loading the Docker images, copy the following configuration files into theservice directory from the unpacked resources directory.

We assume that you are using the “nightwatch” account.



## Installation and Initial Operation Guide for Knox E-FOTA On-Premises

### - copy mysql config file:

```
// copy configuration file
cp /tmp/dfm/mysql-config/my.cnf /dfm/mysql/config

// Set the service account's permission to the configuration file.
sudo chown -R nightwatch:nightwatch /dfm/mysql/config
```

- copy haproxy config file:

```
// copy configuration file
cp /tmp/dfm/haproxy-config/haproxy.cfg /dfm/haproxy/config

// copy error files
cp -rf /tmp/dfm/haproxy-config/errors/ /dfm/haproxy/config

//Set the service account's permission to the configuration file.
sudo chown -R nightwatch:nightwatch /dfm/haproxy/config
```

- copy dfm config file:

```
// copy configuration file
cp /tmp/dfm/dfm_config.json /dfm/config

//Set the service account's permission to the configuration file.
sudo chown -R nightwatch:nightwatch /dfm/config
```

## 4.7. (STEP07) Set up Configuration

In this step, we will set up the initial configuration information needed for the DFM module to run as a Container.

### 【Configuration List】

```
- host_ip: Static IP for DFM server.
- listen_port: External listen port at server for DFM module to be accessed.
- listen_scheme: url scheme(http or https) for DFM module to be accessed.
- access_address: domain-based or ip-based
- access_scheme: http or https
- access_port: public port
- public_endpoint: {access_scheme}://{access_address}:{access_port}
```

In order to properly configure this service after installation, check the customer's network environment in advance. Be sure to check and verify any port-forwarding mapping (NAT) in the customer's network.

Here are a few sample use-cases:

### 【Use Case 1】 IP-based Access Environment

This environment reflects a real-world network environment. The host IP address is not the same, as the public IP address and the CP port number between the public network side and the customer internal network side (including DFM Modules) may be different.

# Installation and Initial Operation Guide for Knox E-FOTA On-Premises

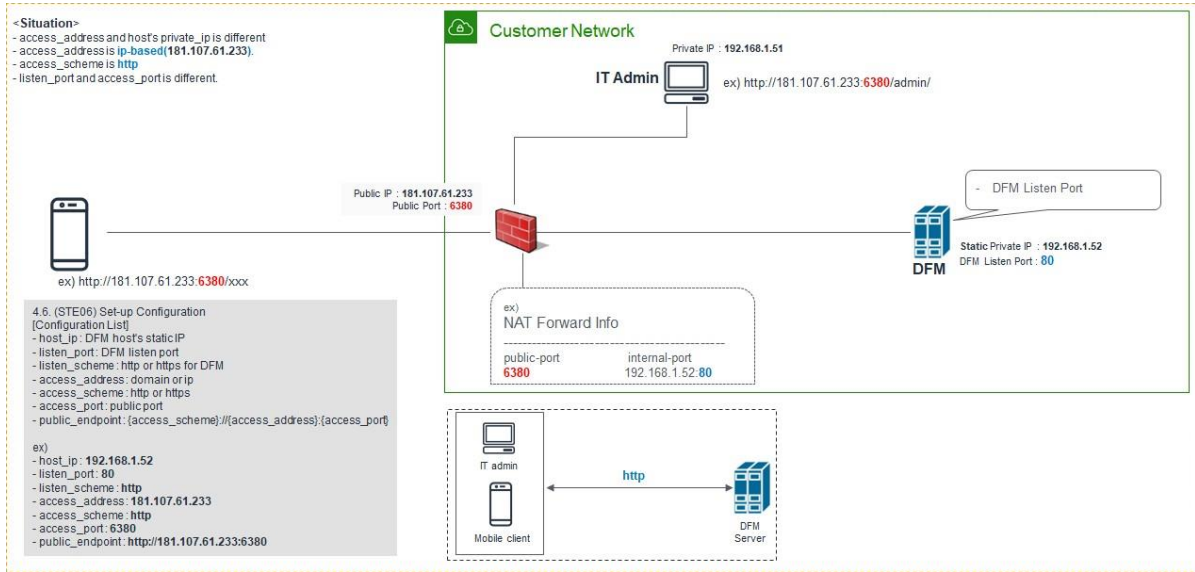


Fig 4-2 IP-based Access Environment

## 【Use Case 2】 Domain-based Access Environment

This environment represents a Domain name-based network environment. You can check the network using the Domain name instead of the IP address.

### 2-1. (Type A) Using HTTP

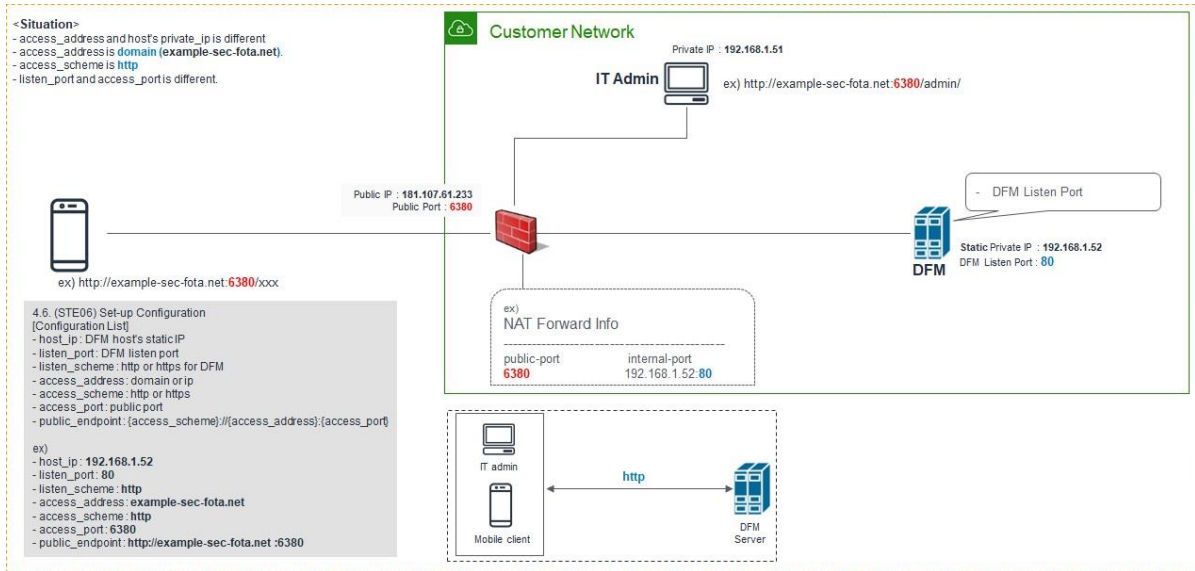


Fig 4-3 Domain-Based Access Environment (Type A)

### 2-2. (Type B) Using HTTPS - Customer's LB processes TLS/SSL Termination

## Installation and Initial Operation Guide for Knox E-FOTA On-Premises

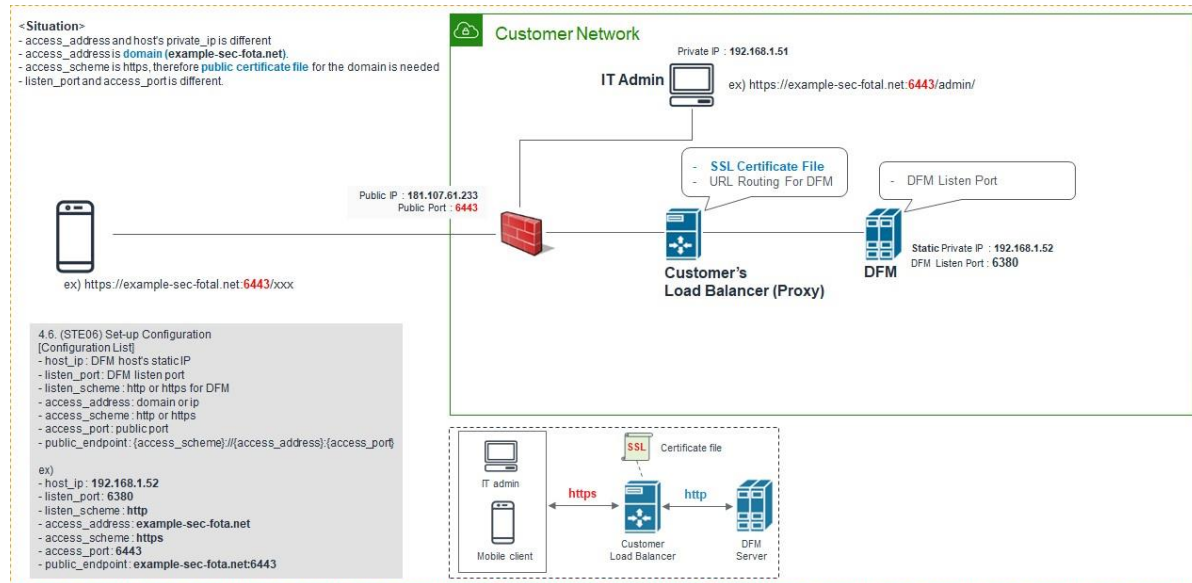


Fig 4-4 Domain-Based Access Environment (Type B)

### 2-3. (Type C) Using HTTPS - DFM processes TLS/SSL Termination

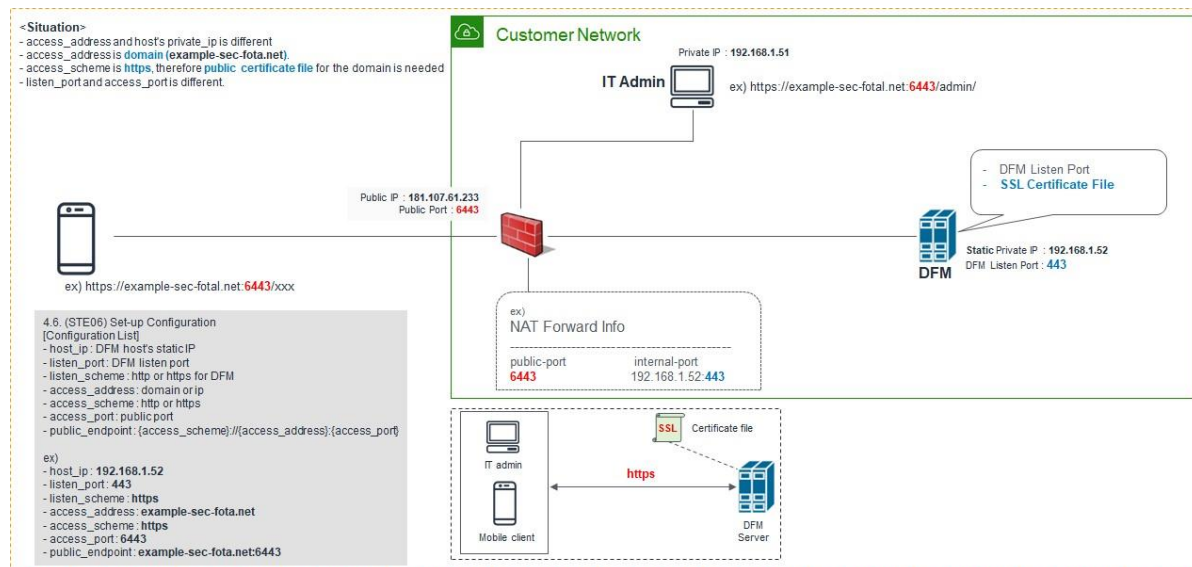


Fig 4-5 Domain-Based Access Environment (Type C)

The following is **an example** of how to execute the command to set the above configurations:

#### 2.3.1 (CASE01) IP-Based

```

- host_ip: 192.168.1.52
- listen_port: 80
- listen_scheme: http
- access_address: 181.107.61.233
- access_scheme: http
- access_port: 6380
    
```

The following shows the commands:

```
dfm config set host_ip="192.168.1.52"  
dfm config set listen_port="80"  
dfm config set listen_scheme="http"  
dfm config set access_address="181.107.61.233"  
dfm config set access_scheme="http"  
dfm config set access_port="6380"
```

Next, check if the configured value is correct. Use the “**dfm config get {key}**” command:

```
Example)  
dfm config get host_ip  
192.168.1.52  
  
dfm config get listen_port  
80  
  
dfm config get listen_scheme  
http  
  
dfm config get access_address  
181.107.61.233  
  
dfm config get access_scheme  
http  
  
dfm config get access_port  
6380
```

### 2.3.2 (CASE02) Domain-Based

↩ (Type ①) Using HTTP

```
- host_ip: 192.168.1.52  
- listen_port: 80  
- listen_scheme: http  
- access_address: example-sec-fota.net  
- access_scheme: http  
- access_port: 6380
```

The following shows the commands:

```
dfm config set host_ip="192.168.1.52"  
dfm config set listen_port="80"  
dfm config set listen_scheme="http"  
dfm config set access_address="example-sec-fota.net"  
dfm config set access_scheme="http"  
dfm config set access_port="6380"
```

Next, check if the configured value is correct. Use the “**dfm config get {key}**” command:

```
Example)
dfm config get host_ip
192.168.1.52

dfm config get listen_port
80

dfm config get listen_scheme
http

dfm config get access_address
example-sec-fota.net

dfm config get access_scheme
http

dfm config get access_port
6380
```

⇔ **(Type ②)** Using **HTTPS** - Customer’s LB processes TLS/SSL Termination

```
- host_ip: 192.168.1.52
- listen_port: 6380
- listen_scheme: http
- access_address: example-sec-fota.net
- access_scheme: https
- access_port: 6443
```

The following shows the commands:

```
dfm config set host_ip="192.168.1.52"
dfm config set listen_port="6380"
dfm config set listen_scheme="http"
dfm config set access_address="example-sec-fota.net"
dfm config set access_scheme="https"
dfm config set access_port="6443"
```

Next, check if the configured value is correct. Use the “**dfm config get {key}**” command:

```
Example)
dfm config get host_ip
192.168.1.52

dfm config get listen_port
6380

dfm config get listen_scheme
http
```

```
dfm config get access_address  
example-sec-fota.net
```

```
dfm config get access_scheme  
https
```

```
dfm config get access_port  
6443
```

⇔ (Type ③) Using **HTTPS** - DFM processes TLS/SSL Termination

```
- host_ip: 192.168.1.52  
- listen_port: 443  
- listen_scheme: https  
- access_address: example-sec-fota.net  
- access_scheme: https  
- access_port: 6443
```

The following shows the commands:

```
dfm config set host_ip="192.168.1.52"  
dfm config set listen_port="443"  
dfm config set listen_scheme="https"  
dfm config set access_address="example-sec-fota.net"  
dfm config set access_scheme="https"  
dfm config set access_port="6443"
```

Next, check if the configured value is correct. Use the “**dfm config get {key}**” command:

```
Example)  
dfm config get host_ip  
192.168.1.52  
  
dfm config get listen_port  
443  
  
dfm config get listen_scheme  
https  
  
dfm config get access_address  
example-sec-fota.net  
  
dfm config get access_scheme  
https  
  
dfm config get access_port  
6443
```

## 4.8. (STEP08) Configure HAProxy

If the external connection type is “https”, the customer must prepare **1)** the access domain they were issued, **2)** a public certificate for the domain in advance. If the customer is using IP address-based addressing rather than DNS, **this step may be skipped**.

If “ingress\_url\_scheme” is set to “https” on the “[4.7. \(STEP07\) Set-up Configuration](#)”, this step must be completed.

### I. HTTPS Handling

There are two possibilities for TLS/SSL Termination:

#### 1) On Customer’s Load Balancer (Proxy)

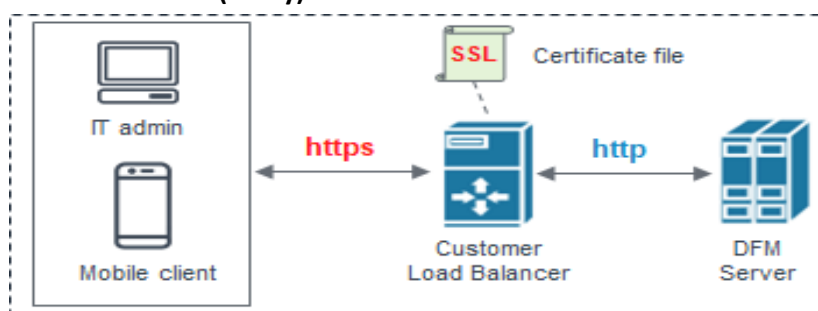


Fig 4-6 On Customer’s Load Balancer (Proxy)

In this case, the customer’s IT manager will operate “public certificate” on its own Load Balancer.

Be careful to comment the “bind \*:443 ...” line and uncomment “#http-response replace-value Location (.\*) https://[%[var(txn.host)]]/admin/ if logout\_path\_set” line in the haproxy.cfg file:

```
vi /dfm/haproxy/config/haproxy.cfg

~~~~~
frontend fe_web
  bind *:80
  #bind *:443 ssl crt /usr/local/etc/haproxy/example-sec-fota.net.pem
~~~~~

backend dfmConsoleBackend
  mode http
  acl logout_path_set var(txn.path) path /admin/logout
  http-request set-header X-Forwarded-Port %[dst_port]
  http-request add-header X-Forwarded-Proto https if { ssl_fc }

  option httpchk GET /admin/health/live
  http-check expect status 200
  default-server inter 5s fall 3 rise 2

# if DFM Server is behind customer's Load-Balancer and also customer's Load-Balancer provides ssl termination.
http-response replace-value Location (.*) https://[%[var(txn.host)]]/admin/ if logout_path_set
```



```
# otherwise
#http-response replace-value Location (.*)%[var(txn.scheme)]://[%[var(txn.host)]]/admin/ if logout_path_set

server dfm-console dfm-console:10050 check resolvers docker init-addr libc,none
~~~~~
```

Since the DFM server can no longer add “Location Header” in response, the **Customer’s Load Balancer must provide the corresponding function**. If the Load Balancer does not provide this function, the user cannot log out after logging into the “admin console webpage” on the DFM.

**2) On DFM Server**

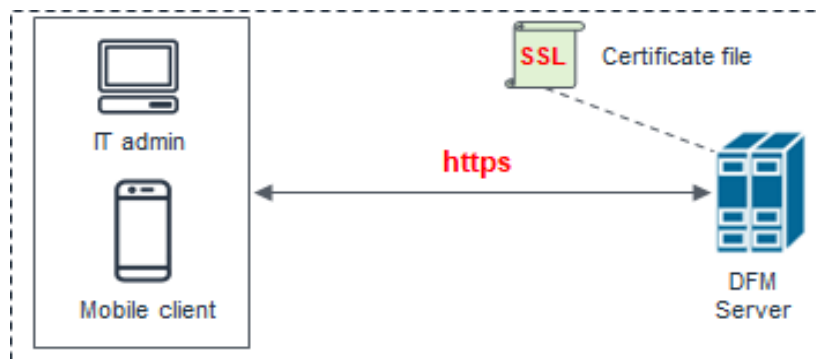


Fig 4-7 On DFM Server

In this case, we need to configure TLS/SSL on our DFM Server. Follow the below steps to do so.

The following assumes that the “**example-sec-fota.net.pem**” file is the public certificate issued by the customer. The public certificate must be copied into haproxy's config folder, and the “haproxy.cfg” file must be edited to change the bind port information and certificate configuration.

- The **cert** parameter identifies the location of the **PEM-formatted** SSL certificate
- **This certificate file** should contain **both the public certificate and private key**
- How to generate the unified certificate for the issued certificate file:

**For example:** we assume that you have the below 4 files and the domain's name is **example-sec-fota.net**

- cert.pem
- chain.pem
- fullchain.pem: cert.pem and chain.pem combined
- privkey.pem
- ⇒ `sudo -E bash -c 'cat fullchain.pem privkey.pem > example-sec-fota.net.pem'`
- ⇒ 'example-sec-fota.net.**pem**' is the unified certificate file
- ⇒ We assume that you are using the “**nightwatch**” account:

- Also you can make a pem file for devices. Copy the “chain.pem” file to create a new file named “efota.pem”.
- ⇒ `cp chain.pem efota.pem`

## Installation and Initial Operation Guide for Knox E-FOTA On-Premises

Be careful to uncomment the “`bind *:443 ...`” line and uncomment the “`#http-response replace-value Location (.*) https://[%{var(txn.host)}/admin/ if logout_path_set`” line in the haproxy.cfg file:

```
cp example-sec-fota.net.pem /dfm/haproxy/config
sudo chown nightwatch:nightwatch /dfm/haproxy/config/example-sec-fota.net.pem
sudo chmod 600 /dfm/haproxy/config/example-sec-fota.net.pem
vi /dfm/haproxy/config/haproxy.cfg

~~~~~
frontend fe_web
  bind *:80
  bind *:443 ssl crt /usr/local/etc/haproxy/example-sec-fota.net.pem
  ~~~~~

backend dfmConsoleBackend
  mode http
  acl logout_path_set var(txn.path) path /admin/logout
  http-request set-header X-Forwarded-Port %[dst_port]
  http-request add-header X-Forwarded-Proto https if { ssl_fc }

  option httpchk GET /admin/health/live
  http-check expect status 200
  default-server inter 5s fall 3 rise 2

  # if DFM Server is behind customer's Load-Balancer and also customer's Load-Balancer provides ssl termination.
  #http-response replace-value Location (.*) https://[%{var(txn.host)}/admin/ if logout_path_set
  # otherwise
  http-response replace-value Location (.*) [%{var(txn.scheme)}://[%{var(txn.host)}/admin/ if logout_path_set

  server dfm-console dfm-console:10050 check resolvers docker init-addr libc,none
  ~~~~~
```

## II. HTTP Handling

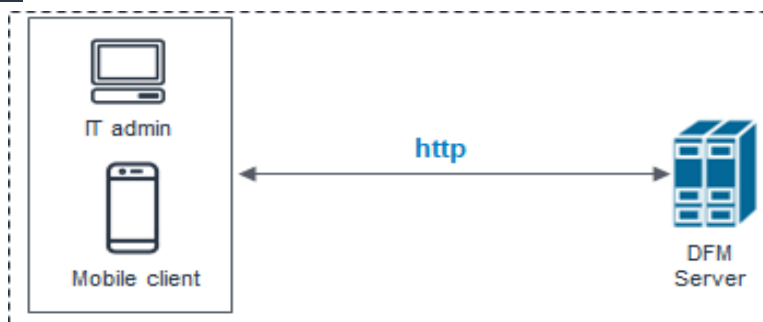


Fig 4-8 On DFM Server

Be careful to comment out the “`bind *:443 ...`” line in the haproxy.cfg file in a HTTP-only (non HTTPS) configuration.

### 【Example】

```
vi /dfm/haproxy/config/haproxy.cfg
```

```

~~~~~
frontend fe_web
  bind *:80
  #bind *:443 ssl crt /usr/local/etc/haproxy/example-sec-fota.net.pem
~~~~~

backend dfmConsoleBackend
  mode http
  acl logout_path_set var(txn.path) path /admin/logout
  http-request set-header X-Forwarded-Port %[dst_port]
  http-request add-header X-Forwarded-Proto https if { ssl_fc }

  option httpchk GET /admin/health/live
  http-check expect status 200
  default-server inter 5s fall 3 rise 2

  # if DFM Server is behind customer's Load-Balancer and also customer's Load-Balancer provides ssl termination.
  #http-response replace-value Location (.* ) https://%[var(txn.host)]/admin/ if logout_path_set
  # otherwise
  http-response replace-value Location (.* ) %[var(txn.scheme)]://%[var(txn.host)]/admin/ if logout_path_set

  server dfm-console dfm-console:10050 check resolvers docker init-addr libc,none
~~~~~

```

#### 4.9. (STEP09) Create Container Network

The DFM Module is a process executed on a container basis, creating the Docker network required for communications among containers.

To create a network, use the following command:

```
dfm network create
```

#### 【Validation】

Run the following command to see if "dfm-network" is visible.

```

dfm network ls
NETWORK ID          NAME                DRIVER              SCOPE
~~~~~
e2697cd6621a       dfm-network         bridge              local
~~~~~

```

#### 4.10. (STEP10) Copy Background app files

Copy the following Background app files into the service directory from the unpacked resources directory.

We assume that you are using the “nightwatch” account.

```
// copy background files
cp /tmp/dfm/licenseApp /dfm/background/

// Set executable
sudo chmod 744 /dfm/background/licenseApp
```

## 4.11. (STEP11) Start up and Initializing the DFM Modules

We have created a service account and signed in using this account to create a service directory, install the DFM Module package, and load the Docker Image resources. The installer has now configured the resources and created the container to network. Now, start up the DFM Modules.

### 4.11.1 Start up Background App

In this stage, the installer starts the Background App for license check. The command to run the background app is as follows:

```
sudo systemctl daemon-reload
sudo systemctl enable efota-license.service
sudo systemctl start efota-license.service
```

#### 【Validation】

Make sure the Background app is running.

```
sudo systemctl status efota-license.service
Loaded: loaded (/etc/systemd/system/efota-license.service; enabled; vendor preset: enabled)
Active: active (running) since Tue 2024-XX-XX 06:39:10 UTC; 7s ago
Main PID: 2028 (licenseApp)
```

### 4.11.2 Start up and Initialize MySQL Server (DFM DB)

In this stage, you will perform the following two steps:

- 1) Set DB root password
- 2) Initialize the SQL query file copied in "4.3 Installing the DFM Module Package" above, on the mysql server

To do this, you must first start the mysql server container.

The command to run the mysql server container is as follows:

```
dfm start dfm-mysql
```

#### 【Validation】

Make sure the MySQL container is in a healthy state. It may take some time until its state is healthy.

```
docker ps -a
```

CONTAINER ID	IMAGE	STATUS	PORTS	NAMES
efded2363698	dfm-mysql:5.7.25	Up 3 seconds (health: starting)	3306/tcp, 33060/tcp	dfm-mysql
~~				

```
$ docker ps -a
```

CONTAINER ID	IMAGE	STATUS	PORTS	NAMES
efded2363698	dfm-mysql:5.7.25	Up 46 seconds (health: healthy)	3306/tcp, 33060/tcp	dfm-mysql

## Installation and Initial Operation Guide for Knox E-FOTA On-Premises

If the status is healthy, run each of the following commands.

- 1) Set DB root password : we assume that “pass-word” is “**1q2w3e4r**”

We use this command: ALTER USER 'root'@'localhost' IDENTIFIED BY '{password}'

```
docker exec -it dfm-mysql mysql -uroot
Welcome to the MySQL monitor.  Commands end with ; or \g.
Your MySQL connection id is 11
Server version: 5.7.25-log MySQL Community Server (GPL)

Copyright (c) 2000, 2019, Oracle and/or its affiliates. All rights reserved.

Oracle is a registered trademark of Oracle Corporation and/or its
affiliates. Other names may be trademarks of their respective
owners.

Type 'help;' or '\h' for help. Type '\c' to clear the current input statement.

mysql> ALTER USER 'root'@'localhost' IDENTIFIED BY '1q2w3e4r';
Query OK, 0 rows affected (0.00 sec)

mysql> exit
```

- 2) Run sql query file : we assume that pass-word is “1q2w3e4r”

```
docker exec -i dfm-mysql mysql -uroot -p1q2w3e4r < /tmp/dfm/mysql-query/init_db.sql
mysql: [Warning] Using a password on the command line interface can be insecure.

docker exec -i dfm-mysql mysql -uroot -p1q2w3e4r < /tmp/dfm/mysql-
query/init_dfm_core.sql
mysql: [Warning] Using a password on the command line interface can be insecure.

docker exec -i dfm-mysql mysql -uroot -p1q2w3e4r < /tmp/dfm/mysql-
query/init_dfm_console.sql
mysql: [Warning] Using a password on the command line interface can be insecure.
```

### 4.11.3 Start up Firmware Storage Server

In this stage, the installer starts the storage server that manages the firmware binary.

The command to run the Firmware Storage Server container is as follows:

```
dfm start dfm-minio
```

#### 【Validation】

Make sure the Minio container is in a healthy state. It may take some time until its state is healthy.

```
docker ps -a
```

Example)

```
$ docker ps -a
```

```
CONTAINER ID   ~   STATUS                               ~   NAMES
~~
af3949b8db98   ~   Up 4 seconds (health: starting)     ~   dfm-minio
~~
$
```

```
$ docker ps -a
```

```
CONTAINER ID   ~   STATUS                               ~   NAMES
~~
af3949b8db98   ~   Up 2 minutes (healthy)              ~   dfm-minio
~~
```

### 4.11.4 Start up DFM Core Server

In this stage, the installer starts the DFM Core Server that provides the core API.

The command to run the core server container is as follows:

```
dfm start dfm-core
```

#### 【Validation】

Make sure the core container is in a healthy state. It may take some time until its state is healthy.

```
docker ps -a
```

Example)

```
docker ps -a
```

```
CONTAINER ID   ~   STATUS                               ~   NAMES
~~
a470bb8bb995   ~   Up 4 seconds (health: starting)     ~   dfm-core
```

```

~~
$

docker ps -a
CONTAINER ID   ~    STATUS                               ~    NAMES
~~
a470bb8bb995   ~    Up 2 minutes (healthy)              ~    dfm-core
~~
    
```

#### 4.11.5 Start up DFM Admin Console Server

In this stage, the installer starts the DFM Admin server that provides the admin console web page. The command to run the admin server container is as follows:

```
dfm start dfm-console
```

#### 【Validation】

Make sure the admin container is in a healthy state. It may take some time until its state is healthy.

```

docker ps -a

Example)
$ docker ps -a
CONTAINER ID   ~    STATUS                               ~    NAMES
~~
07ffa549f3cf   ~    Up 7 seconds (health: starting)      ~    dfm-console
~~
$

docker ps -a
CONTAINER ID   ~    STATUS                               ~    NAMES
~~
07ffa549f3cf   ~    Up 2 minutes (healthy)              ~    dfm-console
~~
    
```

#### 4.11.6 Start up HAProxy Server

In this step, the installer starts the HAProxy server that provides TLS/SSL termination and acts as the API gateway.

The command to run HAProxy server container is as follows:

```
dfm start dfm-proxy
```

#### 【Validation】

Make sure HAProxy container is in a healthy state. It may take some time until its state is healthy.

```

docker ps -a

docker ps -a
    
```

```
CONTAINER ID ~ STATUS ~ NAMES
~~
e10be66fe8bc      Up 18 seconds (health: starting)      dfm-proxy
~~
$

docker ps -a
CONTAINER ID ~ STATUS ~ NAMES
~~
e10be66fe8bc      Up 3 minutes (healthy)      dfm-proxy
~~
$
```

### 4.12. How to check Server Operation Status

Finally, the installer has completed the installation of the on-premises service-based Docker, and the service is now ready for use. However, we first need to validate whether the above five containers are running in a healthy state.

To check the status of the containers, use the command shown below. If every status returns healthy, the service is ready for operation.

```
docker ps -a

Example)
docker ps -a
CONTAINER ID ~ STATUS ~ NAMES
07ffa549f3cf      Up 2 minutes (healthy)      dfm-console
a470bb8bb995      Up 5 minutes (healthy)      dfm-core
af3949b8db98      Up 6 minutes (healthy)      dfm-minio
d882c61ba91c      Up 15 hours (healthy)      dfm-mysql
e10be66fe8bc      Up 3 minutes (healthy)      dfm-proxy
```

Here, the health status means:

```
Healthy(0): Normal
Unhealthy(1): Abnormal
Starting (2): Starting
```

When the installer checks the health status after the installation is completed, if the status is not “Normal”, the installer must redo the installation. If the installation is unsuccessful after several tries, please contact the Samsung engineering team.



## **PART III: Initial Operation**

---

PART III describes how to operate the Knox E-FOTA On-Premises service upon completion of the service installation on the customer's infrastructure.

## 5. Service Operation

This chapter explains how to check the operation status of each DFM Server, and how to use the service properly.

### 5.1. How to access the admin console page after installation

If you completed every installation step up to "[4.12.5. Start-up HAProxy Server](#)" in "[4.12. \(STEP10\) Start-up and Initializing the DFM Modules](#)", access the admin page to check whether the DFM Service is successfully installed and working.

#### 【URL to the admin site】

{access\_scheme}://{access\_address}:{access\_port}/admin/

⇒ Refer to "[4.7. \(STEP07\) Set-up Configuration](#)".

In this guide, we are using the URL and other information as follows:

```
- host_ip : 192.168.1.52
- listen_port : 80
- listen_scheme : http
- access_address : 181.107.61.233
- access_scheme : http
- access_port : 6380
```

#### 【Account & Initial Password (PWD)】

⇒ Account will be: **admin**

⇒ Initial PWD will be: **admin12#**

\*) *This PWD is created by Samsung, so **change the password** after you sign in.*

【Example】 <http://192.168.1.52:6380/admin/> (using a new Chrome browser)

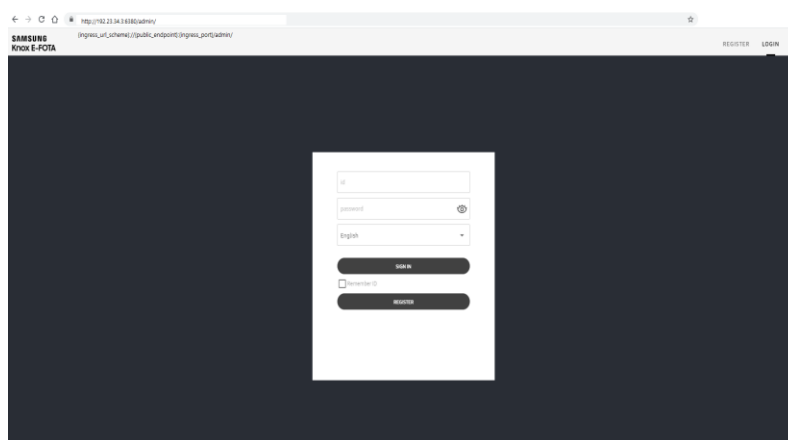


Fig 5-1 The Admin Console for Knox E-FOTA On-Premises

## 5.2. The Contents Upload

In order to use this service, IT admins must upload the contents (such as license and firmware) properly (please refer to the “[Knox E-FOTA On-Premises User Manual](#)” provided).

## 5.3. Troubleshooting and Logging during using the Service

While using this service, any issues should first be addressed on the site to avoid service disruptions from the issues. In order to support issue analysis, Samsung provides the “[TS & Logging Guide for Knox E-FOTA On-Premises](#)” guide for reference.

## 5.4. Updating the SSL Certificate when the old certificate is expired

SSL certificates have an expiration date. When the expiration date for the certificate approaches, the customer must reissue the certificate from the certificate signing authority before the current certificate expires.

There are two possibilities for TLS/SSL Termination.

- 1) On Customer’s Load Balancer (proxy)  
We don’t need to update the certificate file.  
Refer to ([Use Case 2]:Type B) in “[4.7. \(STEP07\) Set-up Configuration](#)”
- 2) On DFM Server  
We need to update the certificate file on the DFM Server.  
Refer to ([Use Case 2]:Type C) in “[4.7. \(STEP07\) Set-up Configuration](#)”

We assume that the newly certificate file is “**new-example-fota.net.pem**”, and we also assume that you are using the “**nightwatch**” service account.

### 【STEP01】 Stop Proxy

The command to stop the proxy Server container is as follows:

```
dfm terminate dfm-proxy
```

### 【STEP02】 Copy the newly certificate

```
cp new-example-fota.net.pem /dfm/haproxy/config
sudo chown nightwatch:nightwatch /dfm/haproxy/config/new-example-fota.net.pem
sudo chmod 600 /dfm/haproxy/config/new-example-fota.net.pem
vi /dfm/haproxy/config/haproxy.cfg

~~~~~

frontend fe_web
    bind *:80
    bind *:443 ssl crt /usr/local/etc/haproxy/new-example-sec-fota.net.pem
```

```
~~~~~  
backend dfmConsoleBackend  
    mode http  
    acl logout_path_set var(txn.path) path /admin/logout  
    http-request set-header X-Forwarded-Port %[dst_port]  
    http-request add-header X-Forwarded-Proto https if { ssl_fc }  
  
    option httpchk GET /admin/health/live  
    http-check expect status 200  
    default-server inter 5s fall 3 rise 2  
  
    # if DFM Server is behind customer's Load-Balancer and also customer's Load-Balancer provides ssl termination.  
    #http-response replace-value Location (.*) https://[%[var(txn.host)]]/admin/ if logout_path_set  
    # otherwise  
    http-response replace-value Location (.*) [%[var(txn.scheme)]]://[%[var(txn.host)]]/admin/ if logout_path_set  
  
server dfm-console dfm-console:10050 check resolvers docker init-addr libc,none  
~~~~~
```

### 【STEP03】 Restart proxy

The command to restart the proxy Server container is as follows:

```
dfm start dfm-proxy
```

To make sure that the HAProxy container is in a healthy state, run the following command. It may take some time until the state shows as healthy.

```
docker ps -a
```

```
docker ps -a
```

```
CONTAINER ID   ~    STATUS              ~                NAMES  
~~  
e10be66fe8bc   ~    Up 18 seconds (health: starting)   ~                dfm-proxy  
~~  
$
```

```
docker ps -a
```

```
CONTAINER ID   ~    STATUS              ~    NAMES  
~~  
e10be66fe8bc   ~    Up 3 minutes (healthy)             ~    dfm-proxy  
~~  
$
```

## 5.5. DB Backup & Restore.

This section describes how to back up and restore the DB to ensure service continuity.

### 5.5.1. Backup a MySQL Server Instance

#### I. To **BACKUP** a MySQL Server instance running in a Docker container using MySQL Enterprise Backup with Docker:

1. On the same host where the MySQL Server container is running, start another container with an image of MySQL Enterprise Edition to perform a backup with the MySQL Enterprise Backup command “`backup-to-image`”. Provide access to the server's data directory using the bind mount we created in the last step. Also, mount a host directory (`/path-on-host-machine/backups/` in this example) onto the storage folder for backups in the container (`/data/backups` in the example) to persist the backups we are creating.

Here is a sample command for this step. Here, we assume that ‘root’ account’s password is **1q2w3e4r** and that the MySQL docker image currently installed is `mysql/enterprise-server:8.0`.

#### 【Basic Command】

```
docker run \
  --mount type=bind,src=/path-on-host-machine/datadir/,dst=/var/lib/mysql \
  --mount type=bind,src=/path-on-host-machine/backups/,dst=/data/backups \
  --rm mysql/enterprise-server:8.0 \
  mysqlbackup -u{user} -p{password} --backup-dir=/tmp/backup-tmp --with-timestamp \
  --backup-image=/data/backups/{db-file-name}.mbi backup-to-image
```

#### 【Example】

```
docker run \
  --mount type=bind,src=/dfm/mysql/data,dst=/var/lib/mysql \
  --mount type=bind,src=/dfm/mysql/backups,dst=/data/backups \
  --rm mysql/enterprise-server:8.0 \
  mysqlbackup -uroot -p1q2w3e4r --backup-dir=/tmp/backup-tmp --with-timestamp \
  --backup-image=/data/backups/db-2020-05-20.mbi backup-to-image
```

[Entrypoint] MySQL Docker Image 8.0.20-1.1.16

MySQL Enterprise Backup Ver 8.0.20-commercial for Linux on x86\_64 (MySQL Enterprise - Commercial)

Copyright (c) 2003, 2020, Oracle and/or its affiliates. All rights reserved.

Oracle is a registered trademark of Oracle Corporation and/or its affiliates. Other names may be trademarks of their respective owners.

Starting with following command line ...

```
mysqlbackup -uroot -pxxxxxxx --backup-dir=/tmp/backups --with-timestamp
  --backup-image=/data/backups/db-2020-05-20.mbi backup-to-image
```

IMPORTANT: Please check that mysqlbackup run completes successfully.

At the end of a successful 'backup-to-image' run mysqlbackup prints "mysqlbackup completed OK!".

```
200520 01:40:40 MAIN      INFO: Starting to log actions.
200520 01:40:40 MAIN      INFO: No SSL options specified.
```

.....

```
200520 01:40:42 MAIN      INFO: Backup image created successfully.
200520 01:40:42 MAIN      INFO: Image Path = /data/backups/db-2020-05-20.mbi
200520 01:40:42 MAIN      INFO: MySQL binlog position: filename binlog.000005, position 530056
```

-----  
Parameters Summary  
-----

```
Start LSN          : 32781824
End LSN            : 32848770
-----
```

```
mysqlbackup completed OK!
```

It is important to check the end of the output by **mysqlbackup** to make sure the backup has been completed successfully.

2. The container exits once the backup job is finished and, with the **--rm** option used to start it, it is removed after it exits. An image backup is created and can be found in the host directory mounted in the last step for storing backups:

```
ls /dfm/mysql/backups/
db-2020-05-20.mbi
```

### 5.5.2. Restore a MySQL Server Instance

#### II. To **RESTORE** a MySQL Server instance in a Docker container using MySQL Enterprise Backup with Docker:

1. Stop the MySQL Server container, which also stops the MySQL Server running inside:  
mounted in the last step for storing backups:

```
docker stop dfm-mysql
```

2. On the host, delete all contents in the bind mount for the MySQL Server data directory:

```
sudo rm -rf /dfm/mysql/data/*
```

3. Start a container with an image of MySQL Enterprise Edition to perform the restore with the MySQL Enterprise Backup command **copy-back-and-apply-log**. Bind-mount the server's data directory and the storage folder for the backups, like what we did when we backed up the server:

#### 【Basic Command】

```
docker run \  
  --mount type=bind,src=/path-on-host-machine/datadir/,dst=/var/lib/mysql \  
  --mount type=bind,src=/path-on-host-machine/backups/,dst=/data/backups \  
  --rm mysql/enterprise-server:8.0 \  
  mysqlbackup --backup-dir=/tmp/backup-tmp --with-timestamp \  
  --datadir=/var/lib/mysql/ --backup-imag=/data/backups/{db-file-name-to-restore}.mbi copy-back-and-apply-log
```

### 【Example】

```
docker run \  
  --mount type=bind,src=/dfm/mysql/data,dst=/var/lib/mysql \  
  --mount type=bind,src=/dfm/mysql/backups,dst=/data/backups \  
  --rm mysql/enterprise-server:8.0 \  
  mysqlbackup --backup-dir=/tmp/backup-tmp --with-timestamp \  
  --datadir=/var/lib/mysql --backup-image=/data/backups/db-2020-05-20.mbi copy-back-and-apply-log
```

MySQL Enterprise Backup Ver 8.0.20-commercial for Linux on x86\_64 (MySQL Enterprise - Commercial)  
Copyright (c) 2003, 2020, Oracle and/or its affiliates. All rights reserved.

Oracle is a registered trademark of Oracle Corporation and/or its affiliates. Other names may be trademarks of their respective owners.

Starting with following command line ...

```
mysqlbackup -uroot -pxxxxxxx --backup-dir=/tmp/backup-tmp  
  --with-timestamp --datadir=/var/lib/mysql  
  --backup-image=/data/backups/db-2020-05-20.mbi copy-back-and-apply-log
```

IMPORTANT: Please check that mysqlbackup run completes successfully.

At the end of a successful 'copy-back-and-apply-log' run mysqlbackup prints "mysqlbackup completed OK!".

```
200520 02:01:08 MAIN      INFO: Starting to log actions.  
[Entrypoint] MySQL Docker Image 8.0.20-1.1.16  
.....  
200520 02:01:10 PCR1     INFO: We were able to parse ibbackup_logfile up to  
      Isn 32848770.  
200520 02:01:10 PCR1     INFO: Last MySQL binlog file position 0 530056, file name binlog.000005  
200520 02:01:10 PCR1     INFO: The first data file is '/var/lib/mysql/ibdata1'  
      and the new created log files are at '/var/lib/mysql'  
200520 02:01:10 MAIN     INFO: Apply-log operation completed successfully.  
200520 02:01:10 MAIN     INFO: Full Backup has been restored successfully.
```

```
mysqlbackup completed OK! with 3 warnings
```

The container exits once the backup job is finished and, with the `--rm` option used when starting it, it is removed after it exits.

4. Restart the server container, which also restarts the restored server:

```
docker restart dfm-mysql
```

## 5.6 Configurable length of password digits

The installer can change this default value of a minimum and maximum length of password digits. (default `password_min_length=8`, default `password_max_length=12`)

### 【STEP01】 Stop DFM Admin Console

The command to stop the DFM Admin Console Server container is as follows

```
dfm terminate dfm-console
```

### 【STEP02】 Set-up the length of the password digits

The minimum length of password is allowed from 8 to 20.

The max length of password is allowed from 12 to 30.

```
dfm config set password_min_length=8  
dfm config set password_max_length=20
```

### 【STEP03】 Check the length of the password digits

```
dfm config get password_min_length  
8
```

```
dfm config get password_max_length  
20
```

### 【STEP04】 Restart DFM Admin Console

The command to restart the DFM Admin Console Server container is as follows

```
dfm start dfm-console
```

To make sure that the DFM Admin Console container is in a healthy state, run the following command. It may take some time until the state shows as healthy.

```
docker ps -a  
  
docker ps -a  
CONTAINER ID   ~    STATUS                               ~    NAMES  
~~ e92be16ye8bc   Up 18 seconds (health: starting)      dfm-console  
~~  
$  
  
docker ps -a  
CONTAINER ID   ~    STATUS                               ~    NAMES  
~~ e92be16ye8bc   Up 3 minutes (healthy)                 dfm-console  
~~  
$
```

## 5.7 Configurable Device Group polling

The installer can change the default value of the device group. (default device\_group\_enable=false,



device\_group\_max\_limit=20000)

This function is used to distribute a large number of devices when serving, and all the devices are distributed across 60 groups.

### 【STEP01】 Stop DFM Core

The command to stop the DFM Core Server container is as follows:

```
dfm terminate dfm-core
```

### 【STEP02】 Set up the device group polling

The allowed values of “device group enable” are “true” or “false”.

The device group max limit is 20000.

```
dfm config set device_group_enable =true
dfm config set device_group_max_limit =20000
```

### 【STEP03】 Check the device group polling

```
dfm config get device_group_enable
true

dfm config get device_group_max_limit
20000
```

### 【STEP04】 Restart the DFM Core

The command to restart the DFM Core Server container is as follows:

```
dfm start dfm-core
```

To make sure that the DFM Admin Console container is in a healthy state, run the following command. It may take some time until the state shows as healthy.

```
docker ps -a

docker ps -a
CONTAINER ID   ~    STATUS                               ~    NAMES
~~ e92be16ye8bc   Up 18 seconds (health: starting)      dfm-core
~~
$

docker ps -a
CONTAINER ID   ~    STATUS                               ~    NAMES
~~ e92be16ye8bc   Up 3 minutes (healthy)                dfm-core
~~
$
```

## 5.8 Configurable device polling interval and postpone waiting time

The installer can change the default value of the device polling interval and postpone the waiting time. (default polling\_interval\_register=86400, default\_waiting\_time=30)

### 【STEP01】 Stop DFM Core

The command to stop the DFM Core Server container is:

```
dfm terminate dfm-core
```

### 【STEP02】 Set up the device polling interval and postpone waiting time

The polling\_interval\_register can only be an integer.

The postpone waiting time limit is allowed from 1 to 7200.

```
dfm config set polling_interval_register =86400
dfm config set default_waiting_time =30
```

### 【STEP03】 Check the device polling interval and postpone waiting time

```
dfm config get polling_interval_register
86400

dfm config get default_waiting_time
30
```

### 【STEP04】 Restart DFM Core

The command to restart the DFM Core Server container is:

```
dfm start dfm-core
```

To make sure that the DFM Admin Console container is in a healthy state, run the following command. It may take some time until its state is healthy.

```
docker ps -a

docker ps -a
CONTAINER ID   ~    STATUS                               ~           NAMES
~~ e92be16ye8bc   Up 18 seconds (health: starting)         dfm-core
~~
$

~    STATUS                               ~           NAMES
Up 3 minutes (healthy)                   dfm-core
```

## 6. When a Server is Rebooted

This chapter explains the steps to restart the DFM Modules if the server is rebooted, to ensure the service can run properly.

The steps to start the DFM Module server are as follows:

### 6.1. (STEP01) Login as the dedicated service account

The DFM Module is logged in with a dedicated service account and operates with the privileges of the account (see, “[4.1. \(STEP01\) Create Service Account and Login](#)”).

### 6.2. (STEP02) Prepare “mount” for DFM modules

The DFM module is installed and operates in the below directory on the **dedicated disk**.

The customer **may NOT configure** the auto-mount on the dedicated disk. For such cases, it is necessary to manually mount the dedicated disk on `/dfm`.

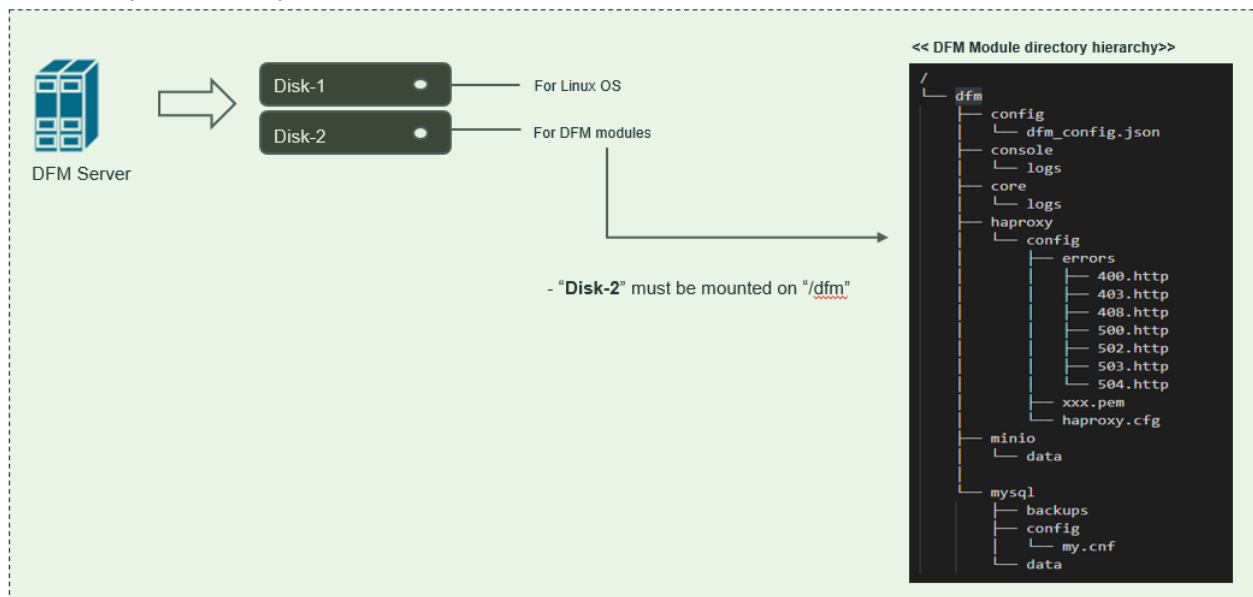


Fig 6-1 A dedicated disk for DFM module

For example, we assume that two disks (“sda” and “sdb”) exist.

#### **[CASE01] Disk is Ready**

If the disk is ready, we don’t need to mount it.

Now, let’s check the disk information:

```
sudo lsblk -p
```

```
NAME          MAJ:MIN RM  SIZE RO TYPE MOUNTPOINT
-----
/dev/sda      202:0     0    1T  0 disk
└─/dev/sda1   202:1     0    1T  0 part /
/dev/sdb      202:80    0    1T  0 disk
```

```
sudo lsblk -f
```

```
NAME      FSTYPE LABEL          UUID                                 MOUNTPOINT
-----
sda
└─sda1    ext4      xxxxxxxx-rootfs 6156ec80-9446-4eb1-95e0-9ae6b7a46187 /
sdb       ext4                                 d3269ceb-4418-45d0-ba68-d6b906e0595d /dfm
```

⇒ “sdb” is already formatted and mounted on /dfm

```
sudo file -s /dev/sdb
```

```
/dev/sdb: Linux rev 1.0 ext4 filesystem data, UUID=d3269ceb-4418-45d0-ba68-d6b906e0595d (extents) (64bit) (large files) (huge files)
```

**[CASE02] Disk is NOT Ready: it is already formatted but not yet mounted on /dfm**

If the disk is formatted but not yet mounted, it needs to be mounted on /dfm.

Now, let’s check the disk information.

```
sudo lsblk -p
```

```
NAME          MAJ:MIN RM  SIZE RO TYPE MOUNTPOINT
-----
/dev/sda      202:0     0    1T  0 disk
└─/dev/sda1   202:1     0    1T  0 part /
/dev/sdb      202:80    0    1T  0 disk
```

```
sudo lsblk -f
```

```
NAME      FSTYPE LABEL          UUID                                 MOUNTPOINT
-----
sda
└─sda1    ext4      xxxxxxxx-rootfs 6156ec80-9446-4eb1-95e0-9ae6b7a46187 /
sdb       ext4                                 d3269ceb-4418-45d0-ba68-d6b906e0595d
```

⇒ “sdb” is formatted but not yet mounted

**1) Mount /dev/sdb on /dfm**

```
// create directory to mount
sudo mkdir /dfm

// mount
sudo mount /dev/sdb /dfm
```

## 2) Verify

```
df -h
```

```
Filesystem      Size  Used Avail Use% Mounted on
/dev/sdb        9.8G  37M  9.3G   1% /dfm
```

### 6.3. (STEP03) Start up Docker

After the system is rebooted, check whether the Docker engine is running.

```
sudo systemctl status docker
```

```

docker.service - Docker Application Container Engine
   Loaded: loaded (/lib/systemd/system/docker.service; enabled; vendor preset: enabled)
   Drop-In: /etc/systemd/system/docker.service.d
            └─http-proxy.conf, https-proxy.conf
   Active: active (running) since Fri 2020-02-07 13:12:39 KST; 3 weeks 2 days ago
     Docs: https://docs.docker.com

```

If the **Active** value is not “**active (running)**”, Docker is not yet running.

If the Docker engine is not running, run it using the following command.

```
$ sudo systemctl start docker
```

### 6.4. (STEP04) Start-up Database Server (MySQL)

After the system is rebooted, restart MySQL using the following command:

```
dfm restart dfm-mysql
```

#### **[Validation]**

Run the following command to ensure the MySQL container is in a healthy state. It may take some time until its state is healthy.

```
docker ps -a
```

```

Example)
$ docker ps -a
CONTAINER ID   ~    STATUS                               ~    NAMES
~~~
d882c61ba91c   ~    Up 4 seconds (health: starting)      ~    dfm-mysql
~~~

docker ps -a
CONTAINER ID   ~    STATUS                               ~    NAMES
~~~
d882c61ba91c   ~    Up 2 minutes (healthy)               ~    dfm-mysql
~~~

```

## 6.5. (STEP05) Start-up Firmware Storage Server

After the system is rebooted, restart Minio. The command to run Minio server container is as follows:

```
dfm restart dfm-minio
```

### 【Validation】

Run the following command to make sure the Minio container is in a healthy state. It may take some time until its state is healthy.

```
docker ps -a
```

Example)

```
docker ps -a
```

```
CONTAINER ID   ~   STATUS                               ~   NAMES
~~
af3949b8db98   ~   Up 4 seconds (health: starting)     ~   dfm-minio
~~
```

```
docker ps -a
```

```
CONTAINER ID   ~   STATUS                               ~   NAMES
~~
af3949b8db98   ~   Up 2 minutes (healthy)              ~   dfm-minio
~~
```

## 6.6. (STEP06) Start-up DFM Core Server

After the system is rebooted, restart DFM Core. The command to run the core server container is as follows:

```
dfm restart dfm-core
```

### 【Validation】

Run the following command to make sure the core container is in a healthy state. It takes some time until its state is healthy.

```
docker ps -a
```

Example)

```
docker ps -a
```

```
CONTAINER ID   ~   STATUS                               ~   NAMES
~~
a470bb8bb995   ~   Up 4 seconds (health: starting)     ~   dfm-core
~~
$
```

```
docker ps -a
```

```
CONTAINER ID   ~   STATUS                               ~   NAMES
~~
a470bb8bb995   ~   Up 2 minutes (healthy)              ~   dfm-core
```

```
~~
```

## 6.7. (STEP07) Start-up DFM Admin Console Server

After the system is rebooted, restart DFM Admin. The command to run the admin server container is as follows:

```
dfm restart dfm-console
```

### 【Validation】

Run the following command to ensure the admin container is in a healthy state. It takes some time until its state is healthy.

```
docker ps -a

Example)
docker ps -a
CONTAINER ID   ~    STATUS                               ~    NAMES
~~
07ffa549f3cf   ~    Up 7 seconds (health: starting)       ~    dfm-console
~~

docker ps -a
CONTAINER ID   ~    STATUS                               ~    NAMES
~~
07ffa549f3cf   ~    Up 2 minutes (healthy)                ~    dfm-console
~~
```

## 6.8. (STEP08) Start-up HAProxy Server

After the system is rebooted, restart HAProxy. The command to run the HAProxy server container is as follows:

```
dfm restart dfm-proxy
```

### 【Validation】

Run the following command to make sure the HAProxy container is in a healthy state. It takes some time until its state is healthy.

```
docker ps -a

Example)
docker ps -a
CONTAINER ID   ~    STATUS                               ~    NAMES
~~
e10be66fe8bc   ~    Up 18 seconds (health: starting)       ~    dfm-proxy
~~
```

```
docker ps -a
CONTAINER ID   ~   STATUS                    ~   NAMES
~~
e10be66fe8bc   ~   Up 3 minutes (healthy)    ~   dfm-proxy
~~
```

## 6.9. (STEP09) Check Server Operation Status

Finally, once every resource is restarted, their states must be verified as healthy. The administrator can use the following command to do so.

If the status of all containers show as healthy, the platform is running normally.

```
docker ps -a

Example)
docker ps -a
CONTAINER ID   ~   STATUS                    ~   NAMES
e10be66fe8bc   ~   Up 3 minutes (healthy)    ~   dfm-proxy
07ffa549f3cf   ~   Up 14 minutes (healthy)   ~   dfm-console
a470bb8bb995   ~   Up 16 minutes (healthy)   ~   dfm-core
af3949b8db98   ~   Up 17 minutes (healthy)   ~   dfm-minio
d882c61ba91c   ~   Up 15 hours (healthy)     ~   dfm-mysql
```



## **PART IV: Update the DFM Modules**

---

PART IV: Update the DFM Modules describes how to update the Knox E-FOTA On-Premises service if there are any updates within the service resources.

## 7. Update the DFM Module

---

This chapter explains how to update the DFM Modules in operation, such as a fetch version. In order to properly update each module, the updater must first stop the module based on the related command (see, [Appendix B](#)).

During the update, the Knox E-FOTA On-Premises service may not be available.

The DFM Module is logged in with a dedicated service account and operates with the privileges of the account. Ensure you log in with the account you previously used for installation.

### 7.1. Docker Image Update

If there is an updated DFM Module, it is released as a Docker Image Package and packed as a tar file. In the release, the Docker Image contains repository and tag information as well.

#### 7.1.1. DFM Database Update (MySQL)

For example, assume that the released **MySQL** image information is as follows:

- docker image: dfm-mysql-xx.xx.xx.tar
- repository: dfm-mysql
- tag: xx.xx.xx

It should be updated as per the following steps.

**【STEP01】** Stop the running DFM Core Server, Admin Console Server, and Mysql Server.

```
dfm terminate dfm-core
dfm terminate dfm-console
dfm terminate dfm-mysql
```

**【STEP02】** Load the released Docker Image.

```
docker load < dfm-mysql-xx.xx.xx.tar
```

**【STEP03】** Change the repository and tag's configuration

```
dfm config set mysql_img_rep=dfm-mysql
dfm config set mysql_img_tag=xx.xx.xx
```

**【STEP04】** Confirm the changed repository and tag's configuration

```
dfm config get mysql_img_rep
dfm config get mysql_img_tag
```

**【STEP05】** Start-up Server

- MySQL Server

```
dfm start dfm-mysql
```

**【Validation】**

Run the following command to ensure the mysql container is in a healthy state. It takes some time until its state is healthy.

```
docker ps -a
```

- DFM Core Server

```
dfm start dfm-core
```

### 【Validation】

Run the following command to ensure the mysql container is in a healthy state. It takes some time until its state is healthy.

```
docker ps -a
```

- DFM Admin Console Server

```
dfm start dfm-console
```

### 【Validation】

Run the following command to ensure the mysql container is in a healthy state. It takes some time until its state is healthy.

```
docker ps -a
```

## 7.1.2. DFM Firmware Storage Update (MinIO)

For example, assume that the released **MinIO** image information is as follows:

- docker image : dfm-minio-xx.xx.xx.tar
- repository : dfm-minio
- tag : xx.xx.xx

【STEP01】 Stop the MinIO server.

```
dfm terminate dfm-minio
```

【STEP02】 Load the released Docker Image.

```
docker load < dfm-minio-xx.xx.xx.tar
```

【STEP03】 Change the repository and tag's configuration

```
dfm config set minio_img_rep=dfm-minio  
dfm config set minio_img_tag=xx.xx.xx
```

【STEP04】 Confirm the changed repository and tag's configuration

```
dfm config get minio_img_rep  
dfm config get minio_img_tag
```

【STEP05】 Start-up Server

- MinIO Server

```
dfm start dfm-minio
```

### 【Validation】

Run the following command to ensure the mysql container is in a healthy state. It takes some time until its state is healthy.

```
docker ps -a
```

## 7.1.3. DFM Core Update

For example, assume that the released **Core** image information is as follows:

- docker image : dfm-core-xx.xx.xx.tar
- repository : dfm-core
- tag : xx.xx.xx

**【STEP01】** Stop the running core server.

```
dfm terminate dfm-core
```

**【STEP02】** Load the released docker image.

```
docker load < dfm-core-xx.xx.xx.tar
```

**【STEP03】** Change the repository and tag's configuration

```
dfm config set core_img_rep=dfm-core  
dfm config set core_img_tag=xx.xx.xx
```

**【STEP04】** Confirm the changed repository and tag's configuration

```
dfm config get core_img_rep  
dfm config get core_img_tag
```

**【STEP05】** Start-up Server

- DFM Core Server

```
dfm start dfm-core
```

**【Validation】**

Run the following command to ensure the mysql container is in a healthy state. It takes some time until its state is healthy.

```
docker ps -a
```

#### 7.1.4. DFM Admin Console Update

For example, assume that the released **Admin** image information is as follows:

- docker image : dfm-console-xx.xx.xx.tar
- repository : dfm-console
- tag : xx.xx.xx

**【STEP01】** Stop the running core, admin and mysql servers.

```
dfm terminate dfm-console
```

**【STEP02】** Load the released docker image.

```
docker load < dfm-console-xx.xx.xx.tar
```

**【STEP03】** Change the repository and tag's configuration

```
dfm config set console_img_rep=dfm-console  
dfm config set console_img_tag=xx.xx.xx
```

**【STEP04】** Confirm the changed repository and tag's configuration

```
dfm config get console_img_rep  
dfm config get console_img_tag
```

**【STEP05】** Start-up Server

- Admin Console Server

```
dfm start dfm-console
```

**【Validation】**

Run the following command to ensure the mysql container is in a healthy state. It takes some time until its state is healthy.

```
docker ps -a
```

### 7.1.5. HAProxy update

For example, assume that the released **HAProxy** image information is as follows:

- docker image : dfm-haproxy-xx.xx.xx.tar
- repository : dfm-haproxy
- tag : xx.xx.xx

**【STEP01】** Stop the running haproxy server.

```
dfm terminate dfm-proxy
```

**【STEP02】** Load the released docker image.

```
docker load < dfm-haproxy-xx.xx.xx.tar
```

**【STEP03】** Change the repository and tag's configuration

```
dfm config set haproxy_img_rep=dfm-haproxy  
dfm config set haproxy_img_tag=xx.xx.xx
```

**【STEP04】** Confirm the changed repository and tag's configuration

```
dfm config get haproxy_img_rep  
dfm config get haproxy_img_tag
```

**【STEP05】** Start-up Server

- HAProxy Server

```
dfm start dfm-proxy
```

**【Validation】**

Run the following command to ensure the HAProxy container is in a healthy state. It may take some time until its state is healthy.

```
docker ps -a
```

## 7.2. The Contents Update

In order to use this service, IT admins must upload the contents (such as license and firmware) properly (please refer to the "[Knox E-FOTA On-Premises User Manual](#)" provided).

## PART V: Purge DFM Modules

---

This section, which covers purging the DFM Modules, describes how to erase all installed services when you want to delete the existing installed modules.

Please note that doing so **erases all existing data**.

After completing these actions, you can reinstall the DFM modules without any interference from the old installation (see [4.3. \(STEP03\) Create Service Directories](#)).

## 8. Purge the DFM Modules

This chapter explains how to purge the installed DFM Modules.

The DFM Module is logged in with a dedicated service account and operates with the privileges of the account. Log in with the account you used during the installation.

### 8.1. Purge the installed Debian package

**[STEP01]** Check if the installed dfm debian package exists.

```
dpkg -l | grep sec-dfm
```

**example-1) when installed pkg exists**

```
$ dpkg -l | grep sec-dfm
ii  sec-dfm      1.0.0.5      all Samsung Enterprise fota dfm package
$
```

**example-2) when installed pkg does Not exist**

```
$ dpkg -l | grep sec-dfm
$
```

**[STEP02]** If the installed dfm debian package exists, remove it.

```
sudo dpkg -P sec-dfm
```

**example)**

```
$ sudo dpkg -P sec-dfm
(Reading database ... 300748 files and directories currently installed.)
Removing sec-dfm (1.0.0.5) ...
$
```

### 8.2. Terminate Services

If there are active services, terminate them.

**[STEP01]** Check if there is any running or exited services. If they exist, we need to terminate them.

```
docker ps -a
```

**example)**

```
docker ps -a
CONTAINER ID   IMAGE                                     ~~~ STATUS           ~~~ NAMES
879ab3603220   dfm-console:2.0.0-20200625045619        ~~~ Up 3 hours (healthy) ~~~ dfm-console
2966ea3ab692   dfm-core:1.0.0.5                         ~~~ Up 3 hours (healthy) ~~~ dfm-core
b6ed98da1101   haproxytech/haproxy-debian:2.1.4        ~~~ Up 3 hours (healthy) ~~~ dfm-proxy
b10b70f135d0   minio/minio:RELEASE.2020-06-01T17-28-03Z ~~~ Up 3 hours (healthy) ~~~ dfm-minio
63c384eb0d5c   mysql/enterprise-server:8.0             ~~~ Up 3 hours (healthy) ~~~ dfm-mysql
```

### 1. DFM Database (MySQL)

Stop the server with the following command:

```
dfm terminate dfm-mysql
```

### 2. DFM Firmware Storage (MinIO)

Stop the server with the following command:

```
dfm terminate dfm-minio
```

### 3. DFM Core Server

Stop the server with the following command:

```
dfm terminate dfm-core
```

### 4. DFM Admin Console Server

Stop the server with the following command:

```
dfm terminate dfm-console
```

### 5. DFM HAProxy Server

Stop the server with the following command:

```
dfm terminate dfm-proxy
```

### 6. Check if all services are removed.

Check with the following command:

```
ps -a
```

### 7. Stop Background App and check

Stop background app with the following command:

```
sudo systemctl stop efota-license.service
```

Check with the following command:

```
sudo systemctl status efota-license.service
Loaded: loaded (/etc/systemd/system/efota-license.service; enabled; vendor preset: enabled)
Active: inactive (dead) since Tue 2024-XX-XX 06:39:10 UTC; 7s ago
```

## 8.3. Remove Service directory

Remove old data using the following:

Remove all directory in /dfm

```
cd /dfm
sudo rm -rf *
```



## **PART VI: APPENDICES**

---

PART IV: APPENDICES presents more in-depth explanations for each item.

## APPENDICES

---

### Appendix A. Terms and Abbreviations

This chapter outlines the terms and abbreviations used in this guide.

App: Application

CAT: Category Codes

CSO/TEO: Customer Service Operation/Technical Engineer for On-Premises

CM: Commercial Type Product

DE: Docker Enterprise

DFM: Device Firmware Management

DNS: Domain Name Server

E2E: End to End

E-FOTA: Enterprise – Firmware over the Air

FYI: For Your Information

HA: High Availability

H/W: Hardware

ID: Identification

KE: Knox E-FOTA (Brand)

LB: Load Balancer

NAT: Network Address Translation

OS: Operating System

PoC: Proof of Concept

PWD: Password

SSL: Secure Sockets Layer

TLS: Transport Layer Security, successor to SSL

UI: User Interface

## Appendix B. How to terminate each DFM Module

These commands should not be used in normal operation, as stopping a module can seriously impact how the service runs. Use this command for updates, such as when there is a fetch version delivery.

1. DFM Database (MySQL)

Stop the server with the following command:

```
dfm terminate dfm-mysql
```

2. DFM Firmware Storage (MinIO)

Stop the server with the following command:

```
dfm terminate dfm-minio
```

3. DFM Core Server

Stop the server with the following command:

```
dfm terminate dfm-core
```

4. DFM Admin Console Server

Stop the server with the following command:

```
dfm terminate dfm-console
```

5. DFM HAProxy Server

Stop the server with the following command:

```
dfm terminate dfm-proxy
```

## Appendix C. Summary for Software (S/W) Recommendation

Read more about detailed recommendations in “[2.3. Recommendation Per each Product usage](#)”.

Product	Category	S/W	Version	Supported Options	Additional Info
CM	Server OS	Ubuntu	18.04.3 LTS 22.04.4 LTS	Enterprise (Paid)	<a href="https://assets.ubuntu.com/v1/1a8fb1b3-UA-I_datasheet_2019-Oct.pdf?_ga=2.267414477.2124202676.1591159591-176408230.1591159591">https://assets.ubuntu.com/v1/1a8fb1b3-UA-I_datasheet_2019-Oct.pdf?_ga=2.267414477.2124202676.1591159591-176408230.1591159591</a>
	Container	Docker Engine	Community Edition	Community (Free)	<a href="https://info.mirantis.com/l/530892/2018-04-12/37s6c/530892/93926/Mirantis_Support_Subscription_Brochure.pdf">https://info.mirantis.com/l/530892/2018-04-12/37s6c/530892/93926/Mirantis_Support_Subscription_Brochure.pdf</a>
	Database	MySQL	Enterprise Edition	Enterprise (Paid)	<a href="https://www.mysql.com/products/">https://www.mysql.com/products/</a>
PoC	Server OS	Ubuntu	18.04.3 LTS 22.04.4 LTS	Community (free)	
	Container	Docker Engine	Community Edition	Community (Free)	
	Database	MySQL	Community Edition	Community (Free)	If a customer wants to continue using the Commercial (CM) product after PoC ends, recommend <b>Enterprise Edition</b> for both <b>Server OS</b> and <b>Database</b> at the start of the PoC

## Appendix D. A Recommended Schedule for On-Site Installation by CSO/TEO

This recommended schedule can be used by the CSO/TEO while they are doing the on-site installation. The detailed schedule can be freely modified.

We recommend “The 4-Day Installation”, as the customer should understand how they are using the Knox E-FOTA On-Premises service during this program. A training session should be included to support this purpose as well.

Day	Actions	Program
Day1	Check the customer’s infrastructures (such as H/W and S/W) to install the service on, based on the prerequisites (see <a href="#">“2.3 Recommendation Per each Product usage”</a> )	<ol style="list-style-type: none"> <li>1. Introduce each other</li> <li>2. Introduce “The 4-Days Installation” program</li> <li>3. Introduce the Knox E-FOTA On-Premises Service (using <a href="#">“Knox E-FOTA On-Premises Service Intro 2020.pdf”</a>)</li> <li>4. Check the customer’s infrastructures                             <ol style="list-style-type: none"> <li>1) H/W recommendation, such as Server CPU cores, RAM, Disk, Network Card</li> <li>2) S/W recommendation, such as Operating System, Docker Engine, MySQL Edition, and whether those have been installed by the customer</li> <li>3) Get public certificate files for https</li> <li>4) Get port number (6443) for https</li> </ol> </li> <li>5. Wrap-up</li> </ol>
Day2	Perform the installation based on this guide (see <a href="#">“4. Installation &amp; Configuration”</a> )	<ol style="list-style-type: none"> <li>1. Introduce the program to Installation</li> <li>2. Start Installation</li> <li>3. Configure the DFM service infrastructure</li> <li>4. Check the service operation via the Web Console</li> <li>5. Wrap-up</li> </ol>
Day3	Perform an acceptance test through E2E with devices	<ol style="list-style-type: none"> <li>1. Introduce how to do an E2E test with devices</li> <li>2. Introduce how to use the service Web Console (using <a href="#">“Knox E-FOTA On-Premises User Guide.pdf</a>, and <a href="#">Knox E-FOTA On-Premises User Guide for Device.pdf”</a>)</li> <li>3. Upload the License into the Server</li> <li>4. Upload the Firmware deltas (Contents for FOTA)</li> <li>5. Upload the device information using during the test</li> <li>6. Create the Campaign</li> <li>7. Perform E2E test with devices</li> <li>8. Wrap-up</li> </ol>
Day4	Introduce Operation and Maintenance procedures (Get document for <b>“The Confirmation of Installation Process End”</b> from the Customer)	<ol style="list-style-type: none"> <li>1. Introduce the steps and how to perform them if there is an issue                              ☞ Using <a href="#">“TS &amp; Logging Guide for Knox E-FOTA On-Premises.pdf”</a></li> <li>2. Introduce how to raise issues                              ☞ Using <a href="#">“Issue raising process”</a></li> <li>3. Introduce service operation steps                              ☞ Using <a href="#">“Service Operation Guide”</a></li> <li>4. Sign the “Notice for Completion Installation”</li> </ol>

## Installation and Initial Operation Guide for Knox E-FOTA On-Premises

		<p>Refer to "<a href="#">Appendix E</a>" (<i>Installation and Initial Operation Guide for Knox E-FOTA On-Premises.pdf</i>)</p> <p>5. Wrap-up</p>
--	--	--

Appendix E. An **Example** of “Notice for Completion Installation”

## Notice for Completion Installation

Dear < Customer Name >,	
This form is to sign-off completion of your project with us. Kindly complete as best as possible and send back to us.	
<b>PRODUCT:</b> Knox E-FOTA One On-premise	<b>MANAGER NAME:</b> _____
<b>START DATE:</b>	<b>COMPLETION DATE:</b>
June 1 2020 ~ June 4 2020	
<b>DELIVERABLES:</b>	
<p><b>1. Device Client</b> It means Client application running on Samsung mobile devices. It is responsible for interacting with the E-FOTA (Enterprise-Firmware Over The Air) Server, including binary package download, and installer activation for the binary package.</p> <p><b>2. Device Firmware Management (DFM)</b> It is a main module for E-FOTA, including managed devices to FOTA, creation and management of FOTA Campaigns, and Firmware binaries for devices. It is consist of followings:                      1) DFM Core – It consists of Core Backend and Front End for Administrators                      2) DB (MySQL) – It is a data base for system operation                      3) Storage – It is a storage for Firmware binaries</p> <p><b>3. Installed in Customer’s Environment</b> It depends on the contraction:                      1) Pre-Prod Environment (1 Set)                      2) Prod Environment (1 Set)</p>	
<b>CUSTOMER’S COMMENTS:</b>	
<b>REMARK:</b>	
By signing this document, I acknowledge that I have delivered all the stated deliverables.	By signing this document, I acknowledge that I have received all the stated deliverables.
<b>Samsung (subsidiary office name)</b>	< Customer Name >
Name: _____	Name: _____
Signature: _____	Signature: _____
Date: _____	Date: _____

We recommend that you complete and send this form within 5 working days. However, if after this period we do not receive the completed form, we shall assume that the project has been signed off by you and no further action will be required of you.

## Appendix F. Set E-FOTA agent config by managed Configuration

KE On-Premises client requires server URL information and TLS certificate to connect to server.

Managed Configuration becomes standard way of configuring android apps and local EMMs are familiar with it.

KE On-Premises client should support Managed Configuration to configure server URL information and TLS certificate of the installed server.

Reference: <https://developer.android.com/work/managed-configurations>

### 1.1 Server URL information can update by Managed Configuration

String server\_url;

You can send a string 'server\_url' in Managed Configure to change the server address.

### 1.2 TLS certificate of the installed server domain can update by Managed Configuration

String pem;

You can send a string 'pem' in Managed Configure to change the TLS certificate file.

When sending a PEM value, it must be sent as a string.

### 1.3 Check pem file in Downloads folder

You can find the pem file named "efota.pem" in the downloads folder.

If you have a PEM file, you can rename it to 'efota.pem' and copy it to the Downloads

< EOF (End Of File) >