

Knox Configure for Wearables

Custom Boot and Shutdown Animation

- Samsung Research & Development Institute UK
- V1.1 - April 2020



Contents

- [Introduction](#)
- [Preparing your image files](#)
- [Preparing your code](#)
- [Creating the EDJ file](#)
- [Creating the Knox Configure profile](#)
- [Assigning the Knox Configure profile](#)
- [Configuring the Wearable](#)
- [Video of configuration and result \(link\)](#)

Knox Configure is a cloud-based service that allows businesses to remotely configure and customize a large number of Samsung devices at once.

There are two editions - Setup and Dynamic.
Both provide the ability to configure custom boot and shutdown logos and animations

Setup edition

The Setup edition allows you to deploy settings and profiles a single time with no additional incremental updates available.

This profile is designed for customers who want to re-brand devices for their own consumers out-of-the-box.

Designed for: Marketing Admins for rebranding for own customers.

Dynamic edition

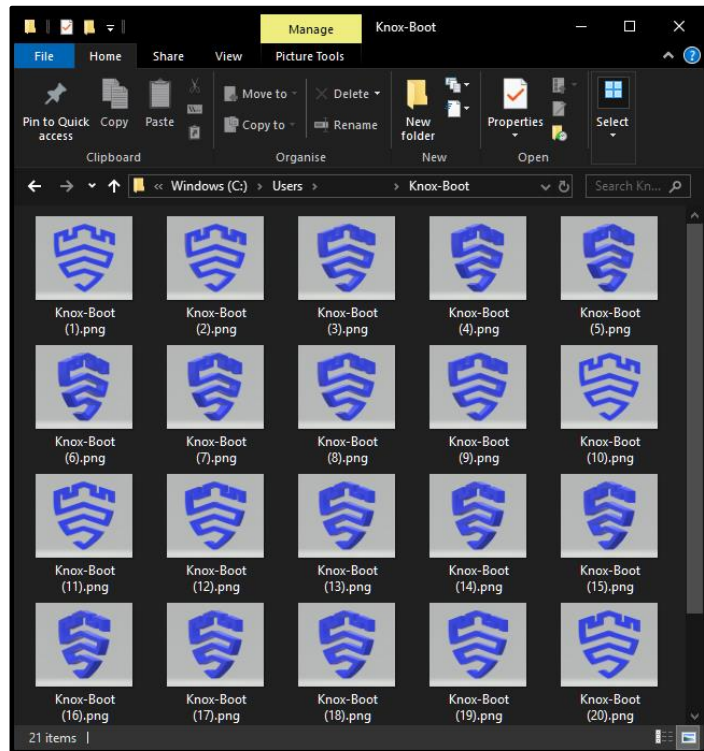
The Dynamic edition allows you to deploy and update enrolled wearable device policies as many times as needed without a factory reset.

Designed for IT admins to configure and customize devices for their employees both dynamically over-the-air and out-of-the-box.

Designed for: IT Admins to configure and customize devices for their employees.

Preparing your image files

- Save your icon image or animation images (such as stills from a GIF) to an accessible folder
- Images are required to be PNG format
- If images are for an animation, giving them the same file name and numbering sequentially can be useful later
- The total size of your images should be less than 500KB



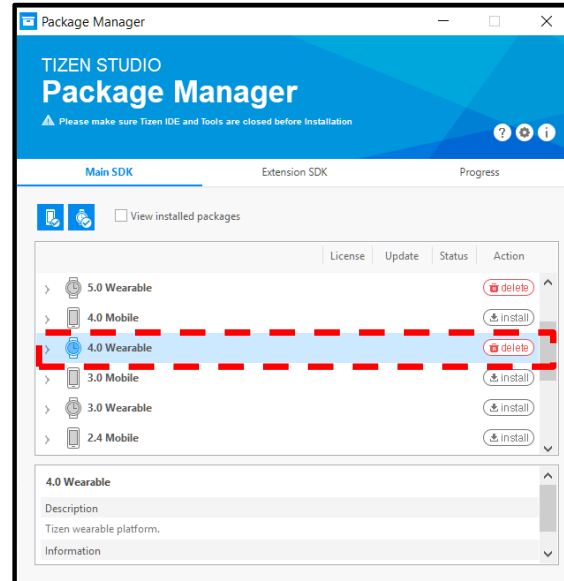
Preparing your code

- The code opposite is the code you will need shortly to create your EDJ file. It needs to be updated with the file names of the images you plan to use as your icon or animation
- Copy the code to your preferred text editor
- Replace IMAGEFILENAME#.PNG with the name of your image(s)
- You can adjust the duration of your logo / animation by changing the transition number

```
//project_name.edc file
images {
  image:"/IMAGEFILENAME1.png" COMP;
  image:"/IMAGEFILENAME2.png" COMP;
  image:"/IMAGEFILENAME3.png" COMP;
}
collections {
  group { name: "poweron";
    parts {
      part { name: "poweron";
        mouse_events: 0;
        description { state: "default" 0.0;
          image{
            normal:"/IMAGEFILENAME1.png";//first and default image
            tween:"/IMAGEFILENAME2.png";
            tween:"/IMAGEFILENAME3.png";
          }
          visible: 1;
        }
      }
    }
  }
  programs {
    program {
      name: "poweron";
      signal: "show";//start animation
      action: STATE_SET "default" 0.0;//state for the image part
      target: "poweron";//part name
      transition: LINEAR 4;//animation type and duration in seconds
      after: "poweron_end";
    }
    program {
      name: "poweron_end";
      action: SIGNAL_EMIT "end" "animation";
    }
  }
}
```

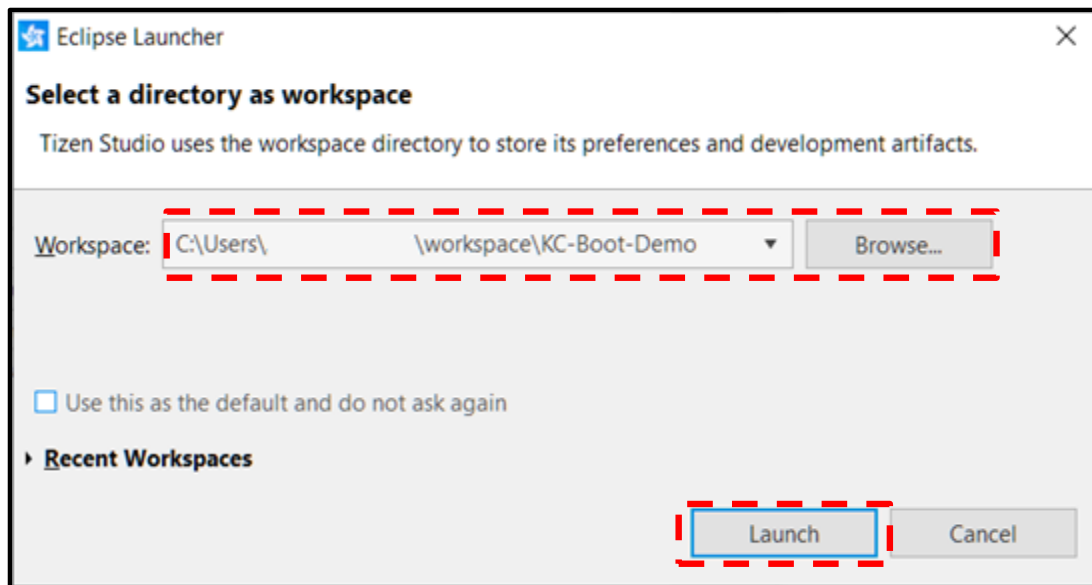
1. Download the [Tizen Studio](#) and install

- As part of the installation, you will need to install the "4.0 Wearable" Main SDK
- If you already have Tizen Studio installed, this can be done or confirmed by selecting Tools > Package Manager
- Once complete, open Tizen Studio

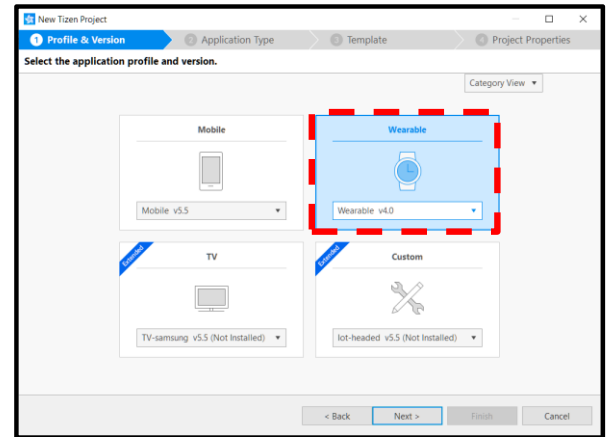
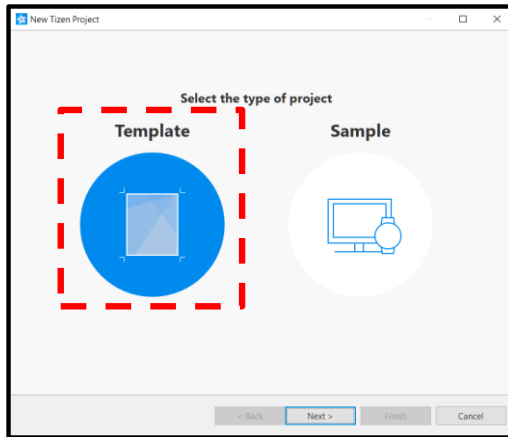
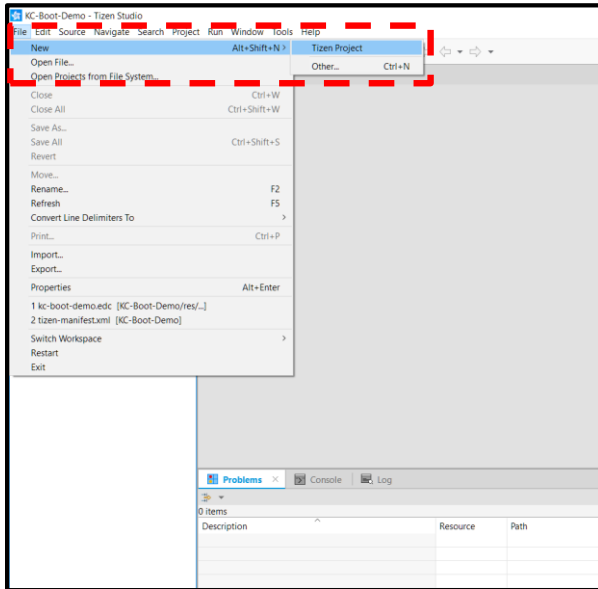


Creating the EDJ file

3. Select or create a workspace directory
4. Click Launch

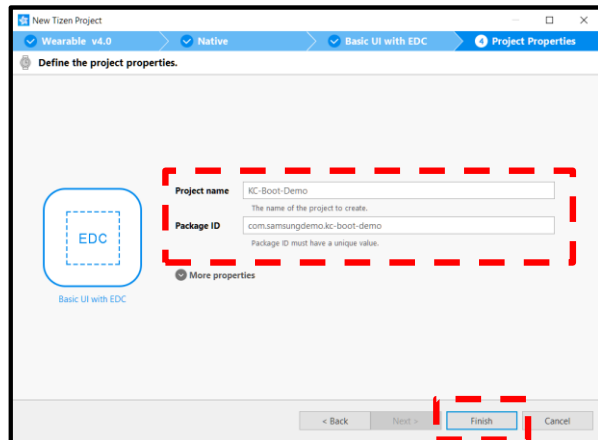
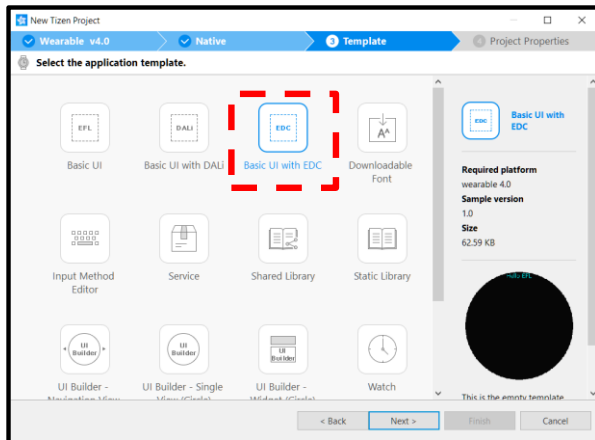
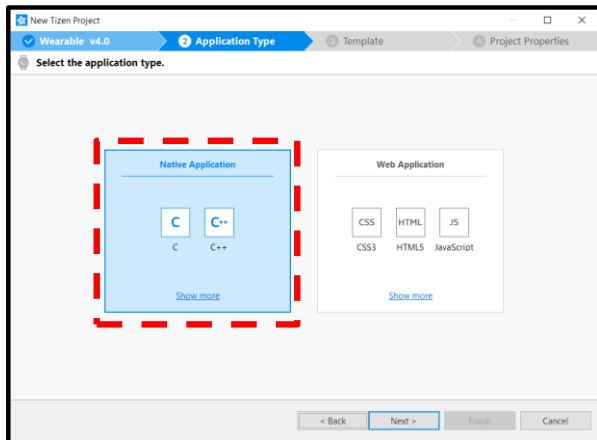


5. Click File > New > Tizen Project
6. Click Template > Click Next
7. In the Wearable section, select Wearable v4.0 > Click Next



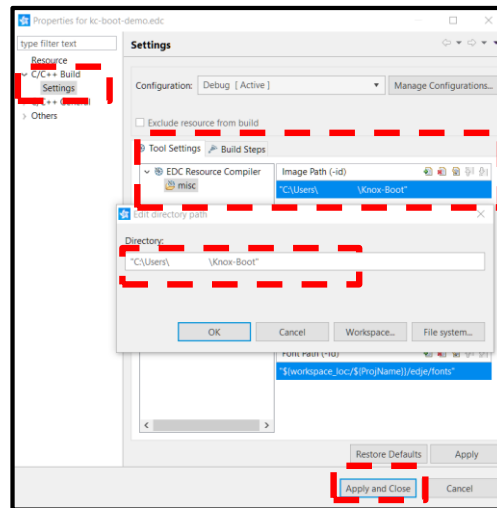
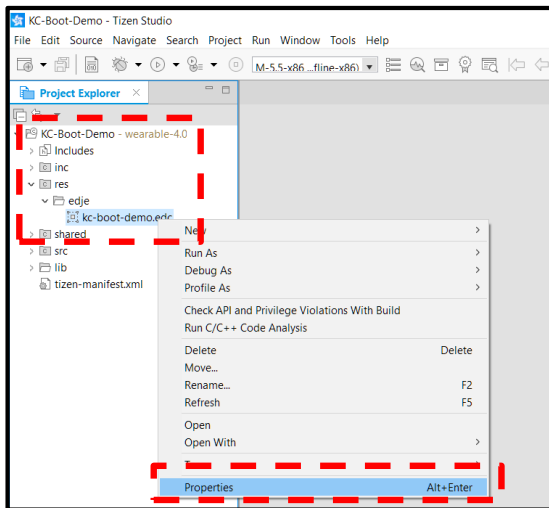
Creating the EDJ file

8. Select Native Application (C / C++) > Click Next
9. Select Basic UI with EDC > Click Next
10. Edit the project name and Package ID > Click Finish

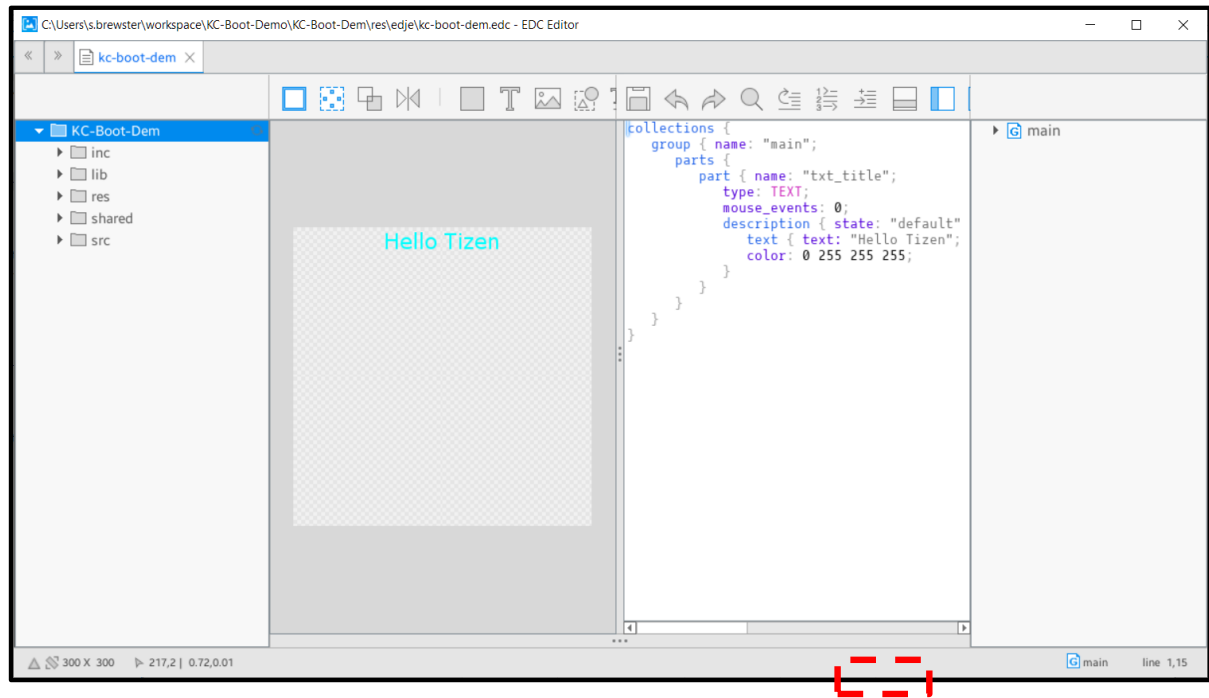
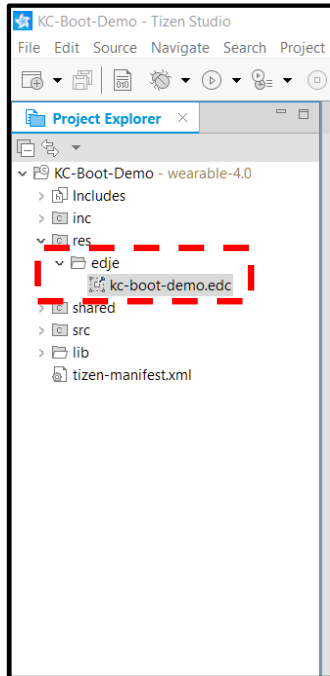


Creating the EDJ file

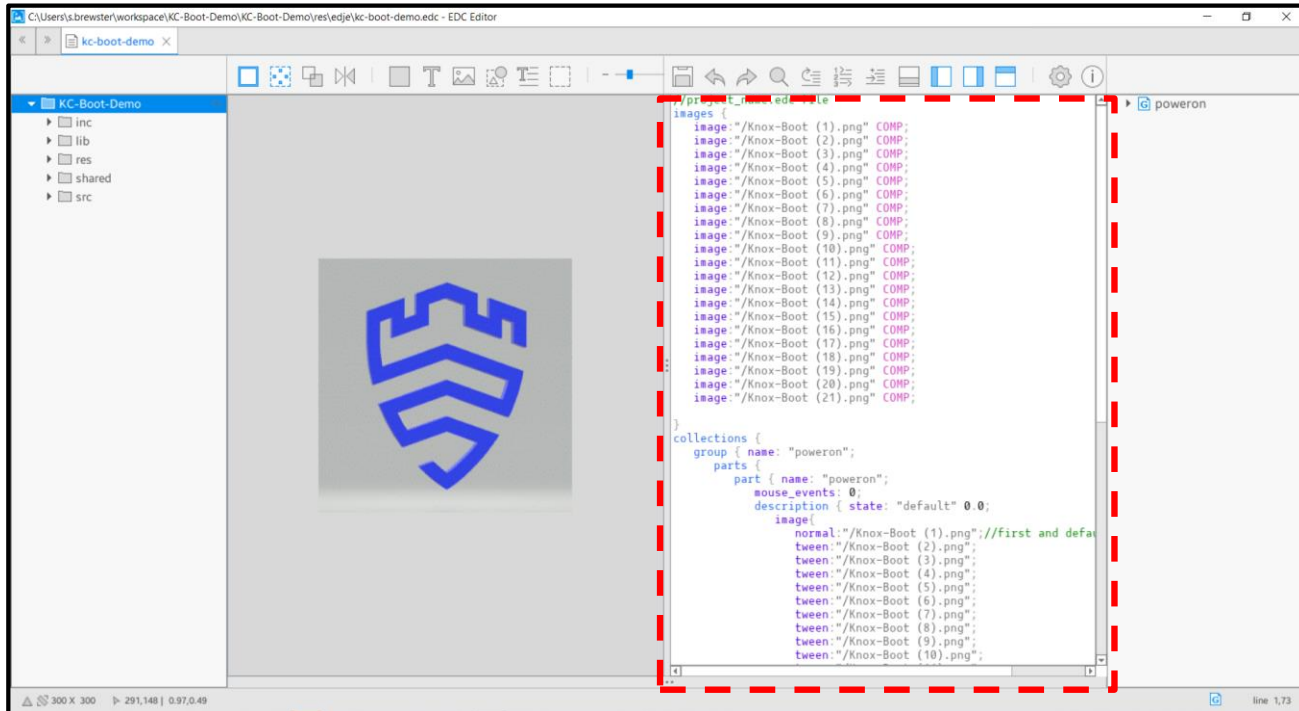
11. Your project has been created. Expand to [ProjectName] / res / edje / [ProjectName].edc > Right-click and open Properties
12. Expand C/C++ Build > Select Settings > Select misc
13. Edit the Image Path (-id) to the location of your images > Click OK > Click Apply and Close



14. From the Project Explorer, double-click [ProjectName].edc
15. You will find some default code that we will replace

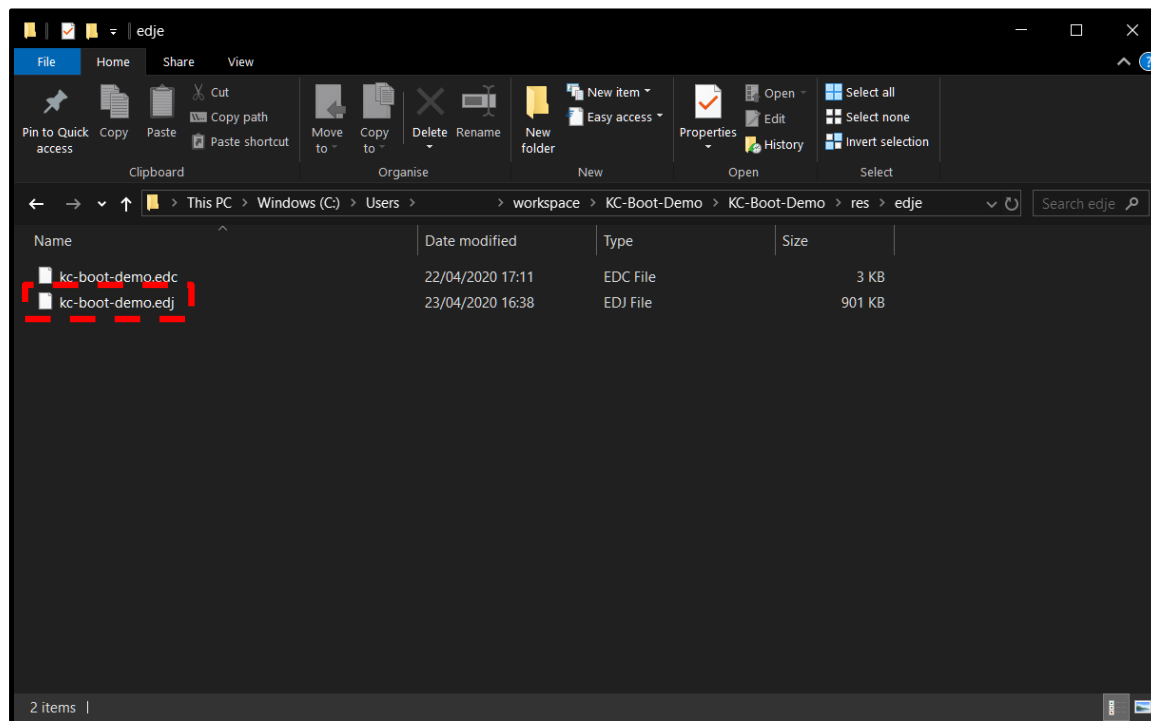


16. Replace the code with the code you created earlier
17. Press CTRL+S to save



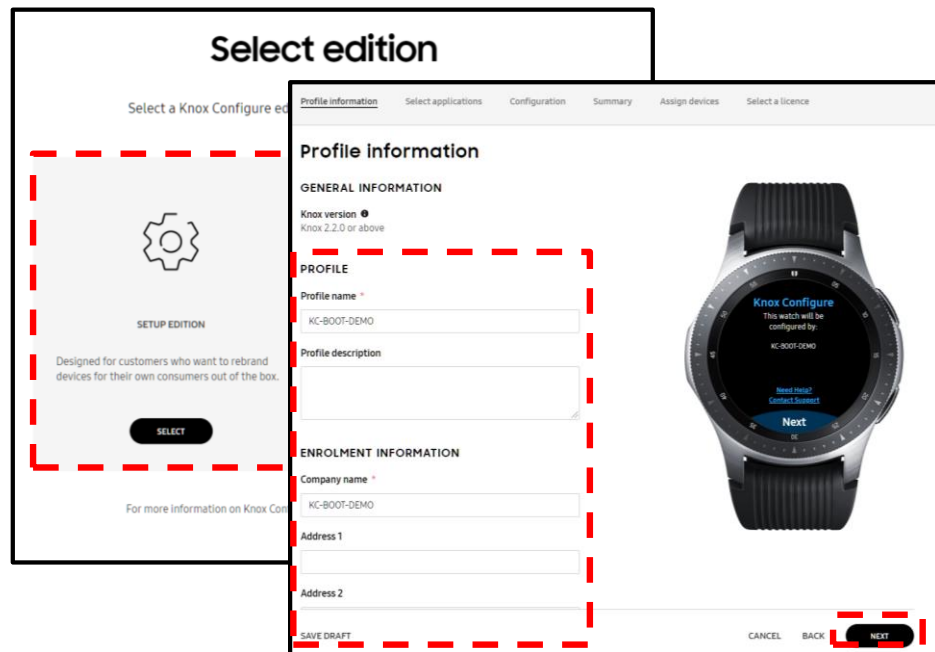
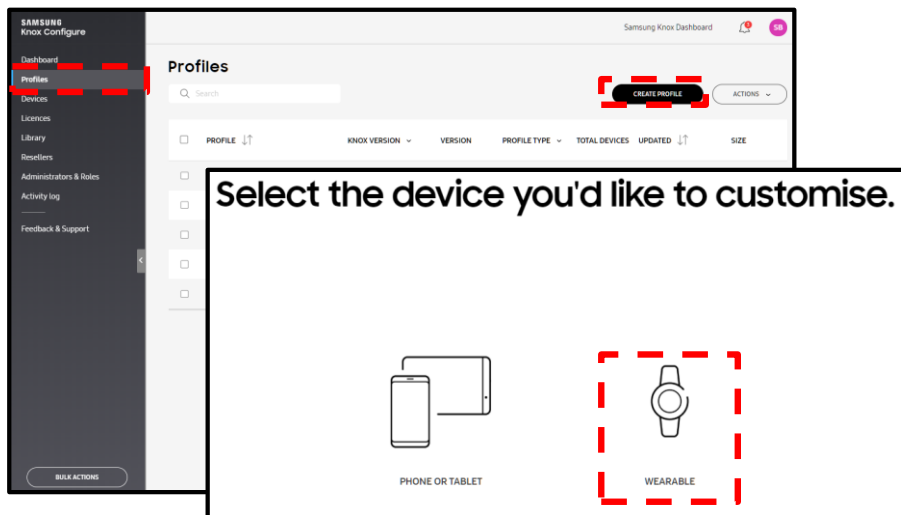
Creating the EDJ file

18. Once saved, your EDJ file will have been created in your Workspace
19. Go to your Workspace / [ProjectName] / res / edje to confirm
20. That's it!

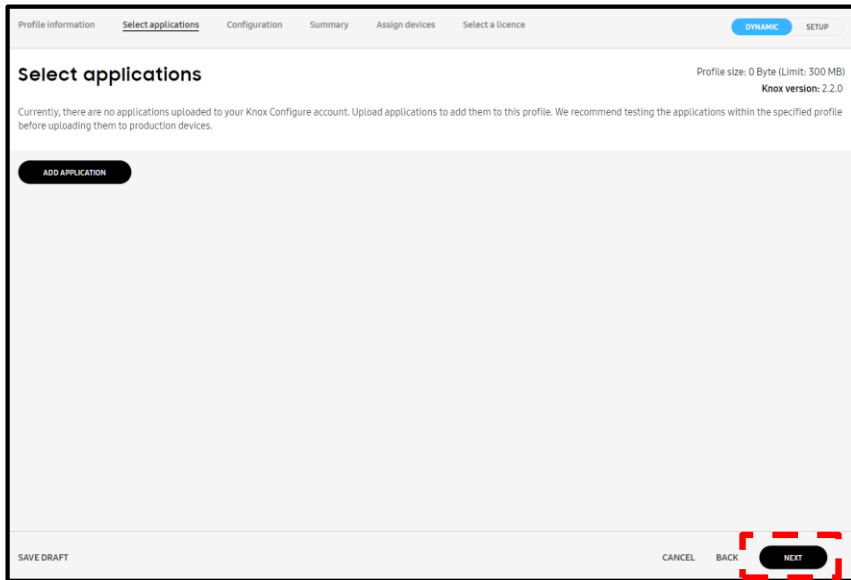


Creating the Knox Configure profile

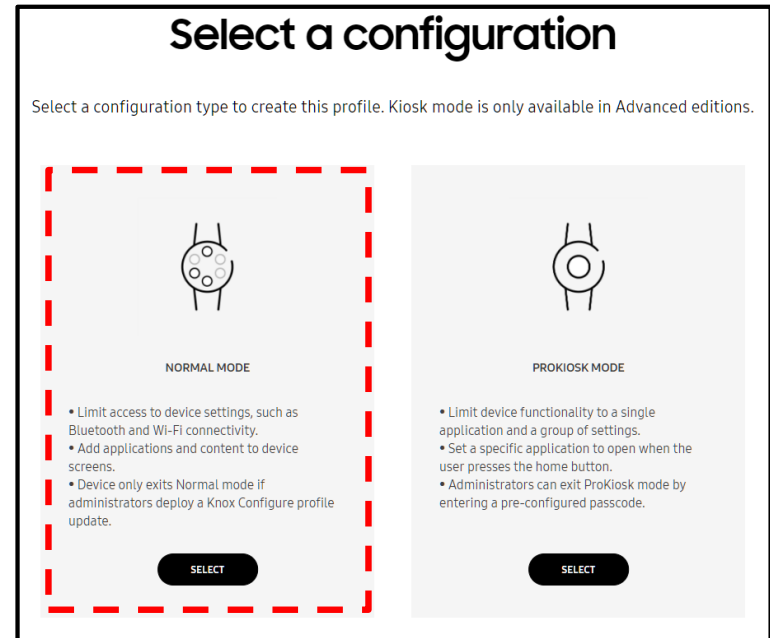
1. Open Knox Configure
2. Go to Profiles
3. Select Create Profile
4. Select Wearable
5. Select the Edition required
6. Enter Profile Information
7. Click Next



8. Click Next on Select Applications page (to skip)



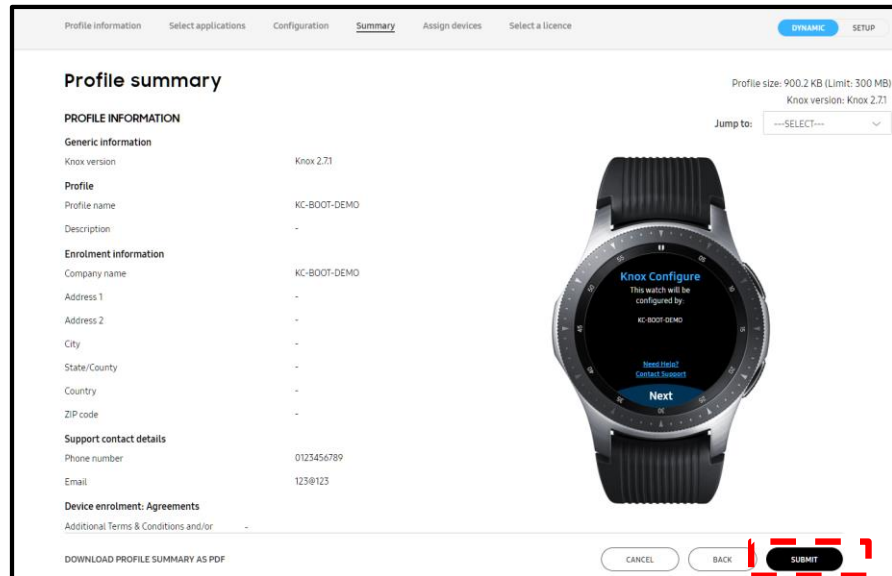
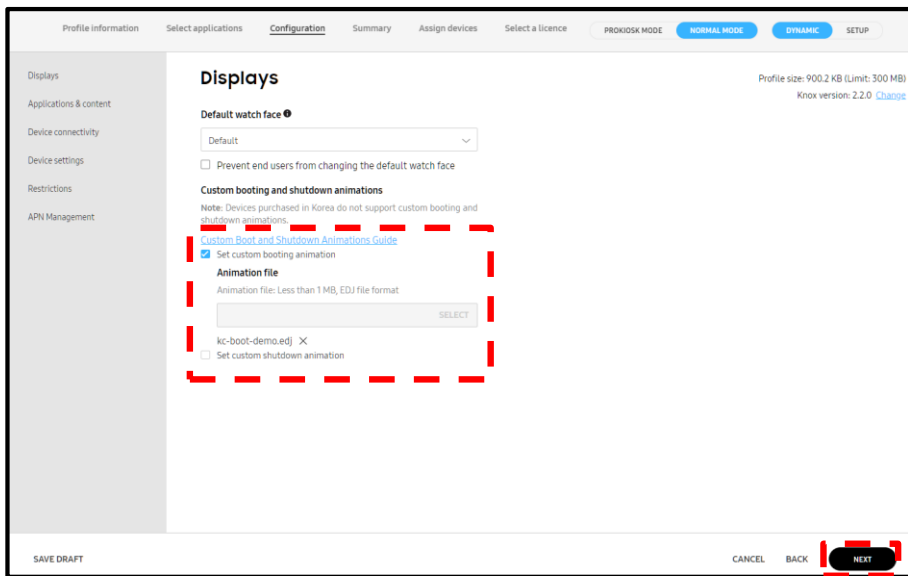
9. Select configuration "Normal Mode"



Creating the Knox Configure profile

- On the Configuration page under the Displays tab, select "Set custom booting animation"
- Locate and open your EDJ file

- Click Next to skip the rest of the configuration options
- Click submit on the Summary page



Assigning the Knox Configure profile

1. On the Assign devices page, tick the device(s) you want to target
2. Click "Select A License"
3. Assign a license to the device(s)
4. Click Done to complete

Profile information | Select applications | Configuration | Summary | **Assign devices** | Select a licence | DYNAMIC | SETUP

Select devices to assign

Select devices to be assigned with the profile KC-BOOT-DEMO

Search

CLEAR ALL FILTERS

DEVICE ID	MODEL	PROFILE	SERVIC EENDS	STATUS	TAGS	MODIFIED
3571	SM-R825F	-	-	Unassigned		23 Apr 2020 17:17

SKIP AND ASSIGN LATER | SELECT A LICENSE

Profile information | Select applications | Configuration | Summary | Assign devices | **Select a licence** | DYNAMIC | SETUP

Select licence

Select licence to assign to selected devices.

Search

GET A LICENCE | ENTER LICENCE KEY

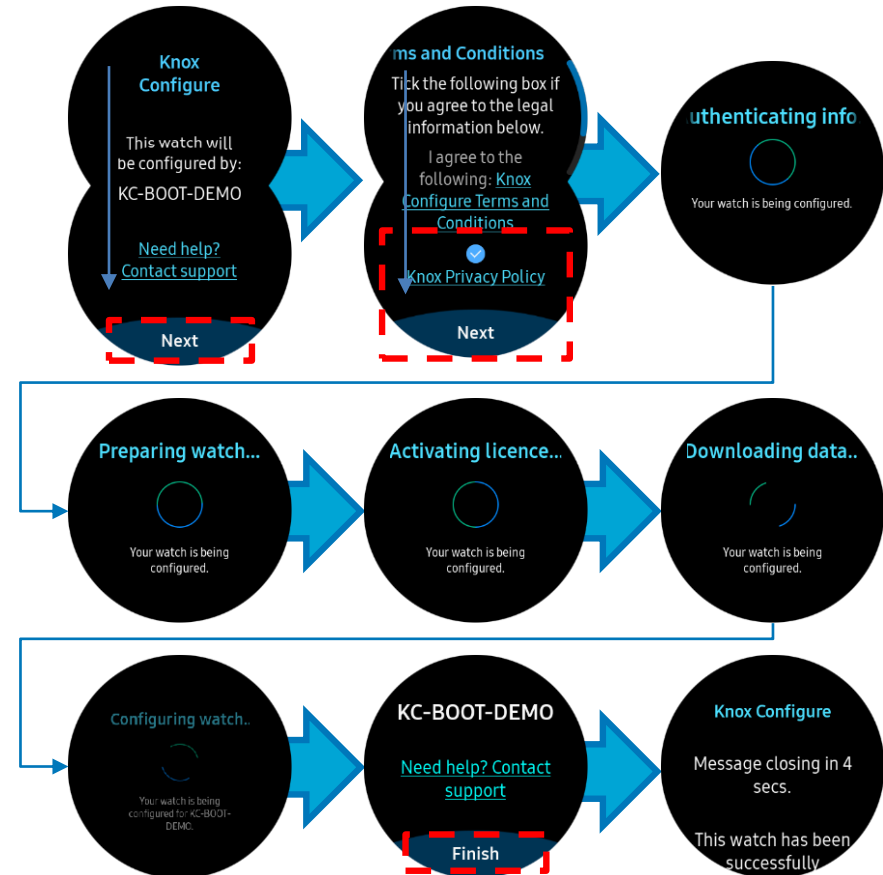
LICENCE NAME	TYPE	STATUS	REMAINING SEATS	ASSIGNED SEATS	ACTIVATED SEATS	ACTIVATION END DATE
7257	Dynamic (Per seat)	Active	29	1	1	25 May 2020

SKIP AND ASSIGN LATER | DONE

Configuring the Wearable

1. Configure the wearable as required out of the box.
2. On completion, Knox Configure will apply the profile assigned to the device.
3. Scroll down and Click Next
4. Scroll down and Tick to accept T&C > Click Next
5. Allow device to configure
6. Click Finish to complete
7. Confirmation of configuration

To confirm the profile has worked correctly, turn the wearable off and back on.



A video demonstrating the installation of the Knox Configure profile and the resulting outcome can be found at the below

<https://youtu.be/ymU2bNwtoZY>



Thank you!

For more information about Knox Configure for Wearables please head to the admin guide here:

<https://docs.samsungknox.com/admin/knox-configure-wearables/welcome.htm>